

 **FALL POSSESSION**



THE
REGENT
1344 SQ.FT.

84 - 285 Chelsea Court

 3 Bedrooms  3 Bathrooms  Single Garage

OPTIONS INCLUDED IN THIS HOME ARE:

- Minutes away from local amenities, including eco-park, green spaces, schools, plaza & East Hills Shopping Centre
- Hardie Board siding exterior
- Homesite facing main road
- Moonlight standard colour palette
- Entry level bedroom & full bathroom
- L-shaped kitchen with added peninsula
- 9' Knock-down ceilings on entry & main floor
- Open concept main floor
- Upgraded semi-built-in kitchen with appliances
- Zebra blinds
- Dual bedrooms with separate ensuites & walk-in closets
- 4-Piece owner's ensuite
- A/C rough-ins & gas line to deck

COME VISIT OUR SHOWHOME

115 & 116 - 285 Chelsea Court, Chestermere, AB
Call Sam Bibanco today at 825.540.0437 or email at chelseacourt@tricohomes.com



SHOWHOME HOURS:

Mon - Thurs: 2pm - 8pm
Fri: Closed
Sat - Sun: 12pm - 5pm

PLUS RECEIVE YOUR OWN
TRICO RED CARD



& ENJOY INCREDIBLE ONGOING SAVINGS & REWARDS FROM OUR PARTNERS & RETAILERS



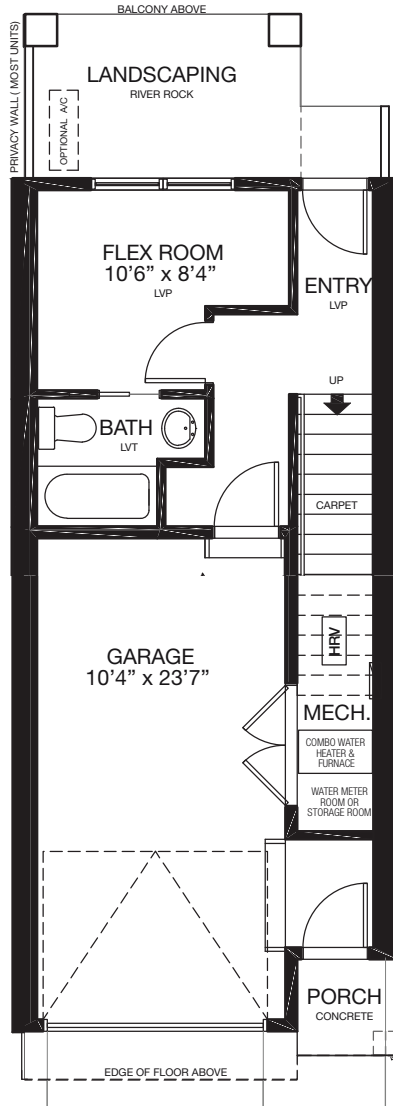
tricohomes.com



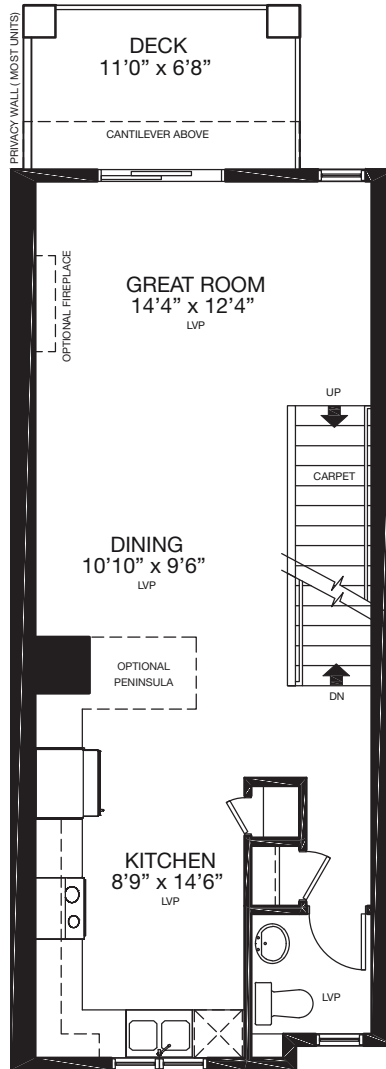
THE REGENT

1344 SQ.FT.

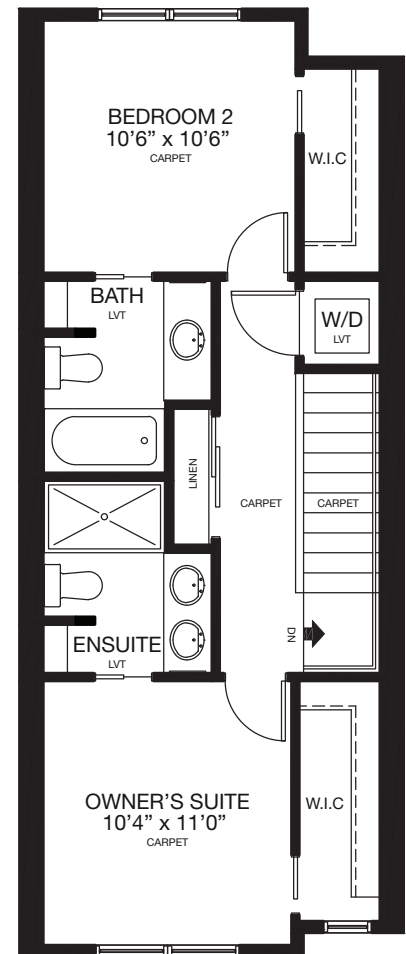
84 - 285 Chelsea Court



ENTRY
203 SQ.FT.



MAIN
559 SQ.FT.



UPPER
582 SQ.FT.



Platinum member
2004 - 2025



Renderings are artist's conceptions only and may vary by community and lot selection. Prices, floorplans, specifications and dimensions are approximate and are subject to change without notice. E.&O.E. © All rights reserved, including the right if reproduction in the whole or in part without the permission of Trico Homes.

Plan updated September 22, 2025



trichomes.com