



FALL 2025 POSSESSION



# THE RAEYA ZLL 1802 SQ.FT.

118 Wolf Hollow Terrace SE



3 Bedrooms



3 Bathrooms

## OPTIONS INCLUDED IN THIS HOME ARE:

- South-facing homesite
- Second separate entry
- Close to parks & Bow River pathways
- 9' Knock-down ceilings on main floor
- Stainless steel appliances in kitchen
- 10' Kitchen island
- Hardwood, tile & carpet throughout
- 3 Bedrooms with central bonus room on upper floor
- 4-Piece owner's ensuite
- Front veranda & rear deck
- Gas line to deck
- 9' Foundation

## COME VISIT OUR SHOWHOMES

110 & 114 Wolf Creek Rise SE, Calgary, AB

Call Desirae Gersheid today at 403.457.0856 or email at wolfwillowlaned@tricohomes.com



THE ROWAN II



THE SIENNA

## SHOWHOME HOURS:

Mon - Thurs: 2pm - 8pm

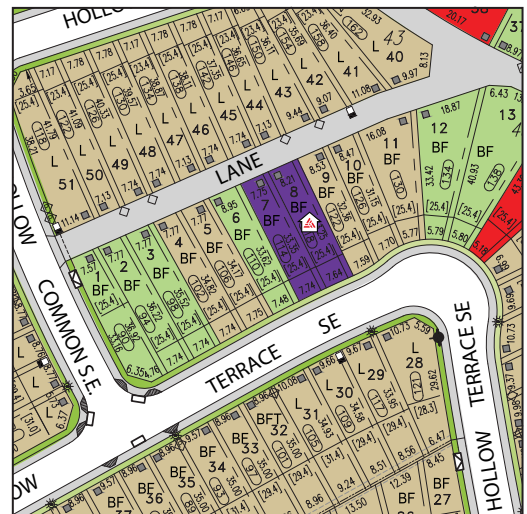
Fri: Closed

Sat - Sun: 12pm - 5pm

PLUS RECEIVE YOUR OWN  
**TRICO RED CARD**



& ENJOY INCREDIBLE  
ONGOING SAVINGS &  
REWARDS FROM OUR  
PARTNERS & RETAILERS



WOLF WILLOW



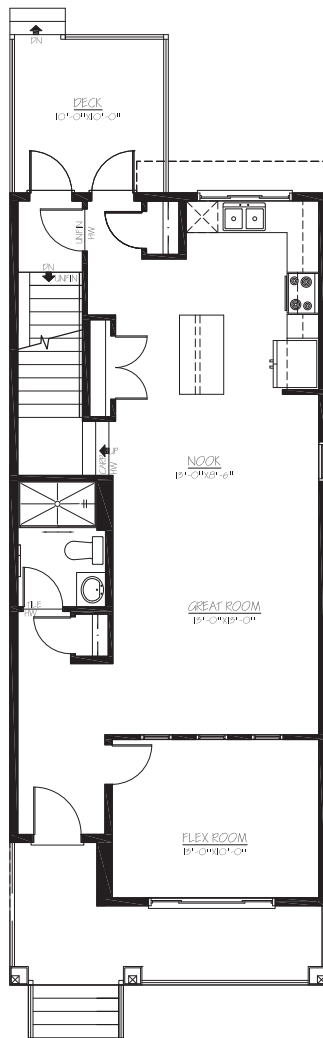
tricohomes.com



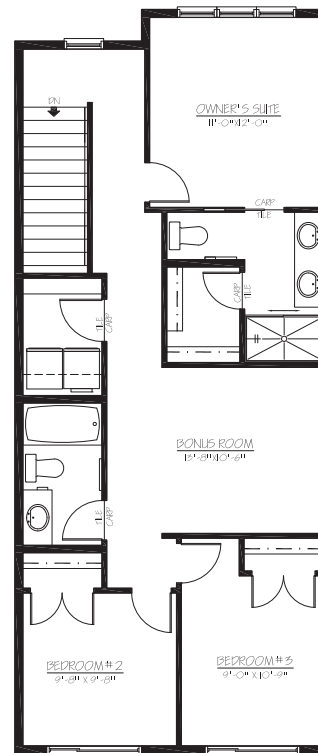
# THE RAEYA ZLL

1802 SQ.FT.

118 Wolf Hollow Terrace SE



**MAIN**  
878 SQ.FT.



**UPPER**  
924 SQ.FT.



Renderings are artist's conceptions only and may vary by community and lot selection. Prices, floorplans, specifications and dimensions are approximate and are subject to change without notice. E.&O.E. © All rights reserved, including the right if reproduction in the whole or in part without the permission of Trico Homes.

Plan updated July 2, 2025



tricohomes.com