
 3 Bedrooms

 2½ Bathrooms

 Double Garage

THE OXFORD II ZLL

2094 SQ.FT.

23 BELMONT PLACE SW

BELMONT

COME VISIT OUR SHOWHOMES

23 Belmont Place SW

Call Will Jorgenson at 403.764.0310
or email belmont@tricohomes.com

SHOWHOME HOURS:

Mon - Thurs: 2pm - 8pm

Fri: Closed

Sat - Sun: 12pm - 5pm

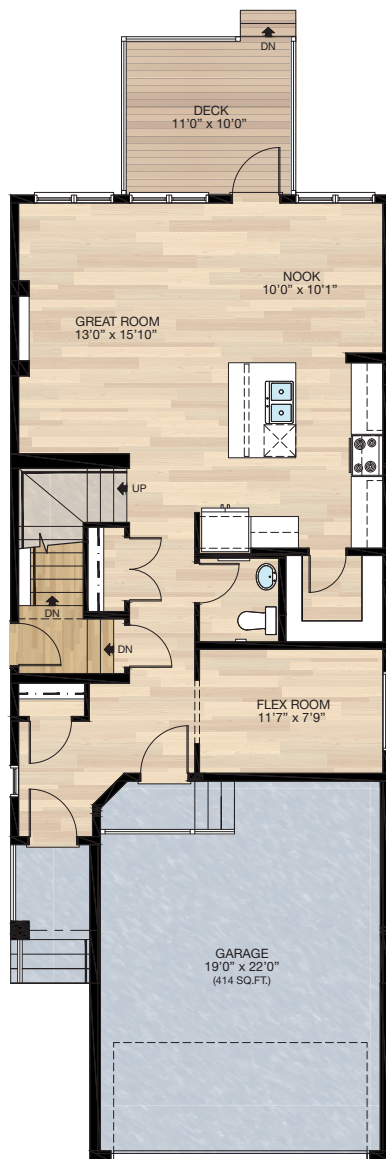


Trico Homes™

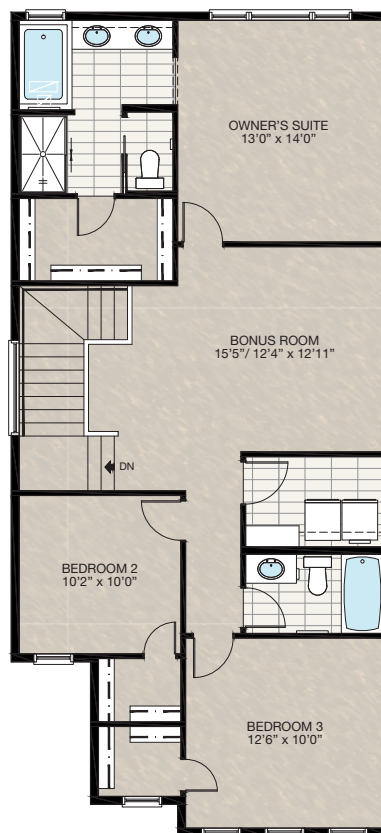
The Heart of Homebuilding®

SHOWHOME PLAN

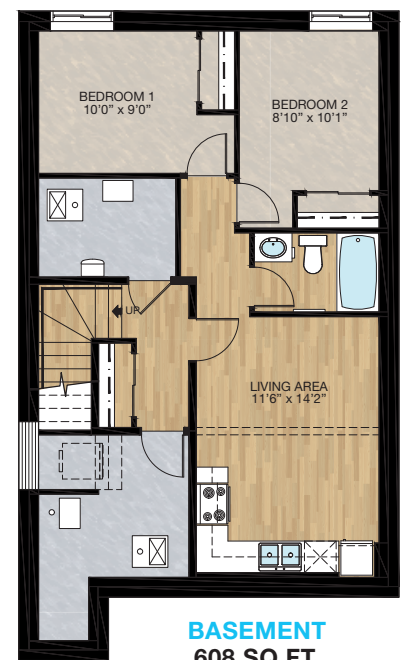
THE
OXFORD II
ZLL
2094 SQ.FT.



MAIN
912 SQ.FT.



UPPER
1182 SQ.FT.



BASEMENT
608 SQ.FT.



Renderings are artist's conceptions only and may vary by community and lot selection. Prices, floorplans, specifications and dimensions are approximate and are subject to change without notice. E.&O.E. © All rights reserved, including the right if reproduction in the whole or in part without the permission of Trico Homes.

Plan updated as of May 8, 2025.



tricohomes.com