
 4 Bedrooms

 3½ Bathrooms

 Double Garage

THE HARRINGTON ZLL

2120 SQ.FT.

103 WOLF CREEK RISE SE



COME VISIT OUR SHOWHOMES

103 & 107 Wolf Creek Rise SE, Calgary, AB
Call Shawna Christensen at 403.457.0856 or
email at wolfwillow@tricohomes.com

SHOWHOME HOURS:

Mon - Thurs: 2pm - 8pm

Fri: Closed

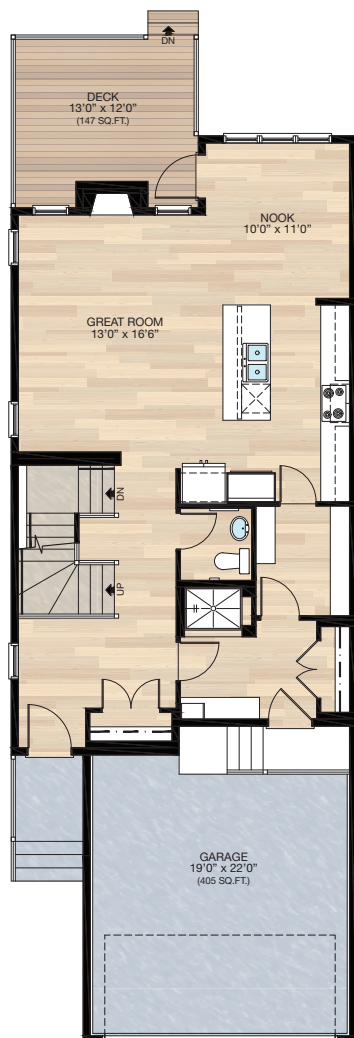
Sat - Sun: 12pm - 5pm



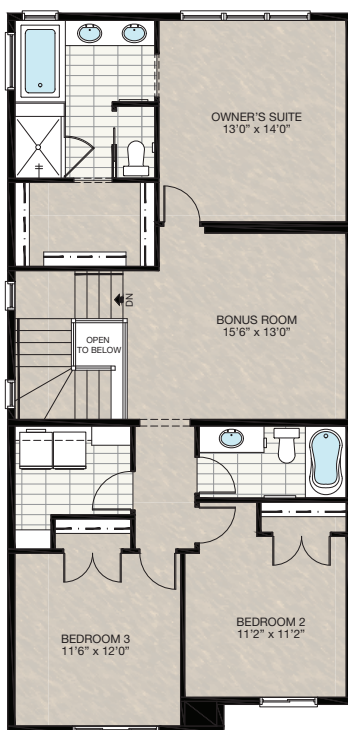
Trico Homes™
The Heart of Homebuilding®

SHOWHOME PLAN

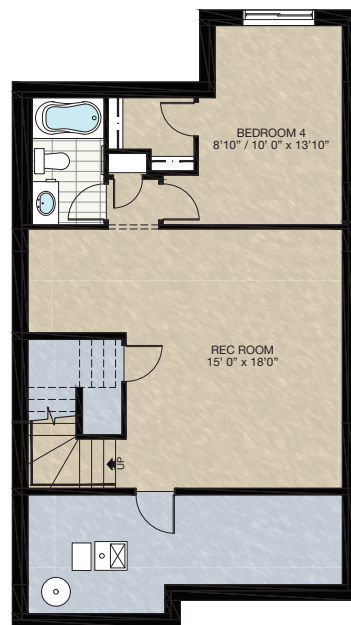
THE
HARRINGTON
2120 SQ.FT.



MAIN
951 SQ.FT.



UPPER
1169 SQ.FT.



BASEMENT
610 SQ.FT.



Renderings are artist's conceptions only and may vary by community and lot selection. Prices, floorplans, specifications and dimensions are approximate and are subject to change without notice. E.&O.E. © All rights reserved, including the right if reproduction in the whole or in part without the permission of Trico Homes.

Plan updated as of August 15, 2022.



HARDWOOD	DECK	CARPET	CONCRETE	TILE	LAMINATE	LINO
----------	------	--------	----------	------	----------	------

tricohomes.com