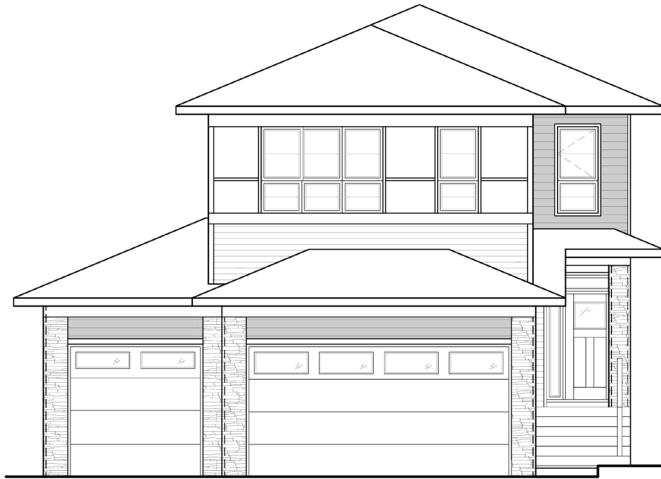




DECEMBER POSSESSION



THE SPRINGHILL

2684 SQ.FT.

151 Dawson Wharf Mount



5 Bedrooms



4 Bathrooms



Triple Garage

OPTIONS INCLUDED IN THIS HOME ARE:

- 46' Wide homesite
- Main floor bedroom & full bathroom
- Main floor flex room
- Built-in kitchen appliances
- Spice kitchen
- Electric fireplace in great room
- Central bonus room on upper floor
- 4 Bedrooms on upper floor with dual ensuite layout
- 5-Piece owner's ensuite with 10mm glass & tile shower
- Full laundry room with sink
- Separate side entrance
- Basement suite rough-ins
- 13'x10' Rear deck with stairs to grade

COME VISIT OUR SHOWHOME

379 Chelsea Passage, Chestermere, AB

Call Kaylee Pilon today at 587.231.6654 or email at dawsonslanding@tricohomes.com



SHOWHOME HOURS:

Mon - Thurs: 2pm - 8pm

Fri: Closed

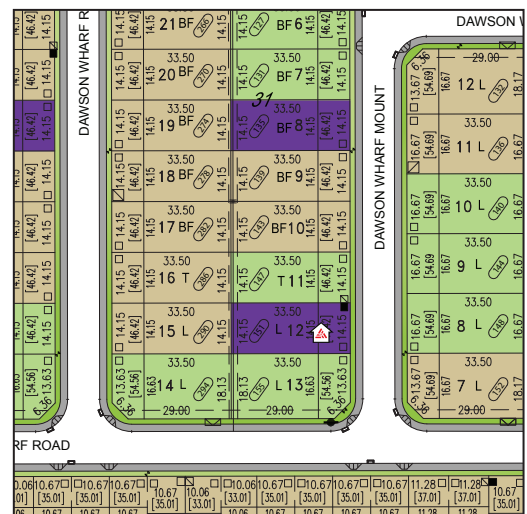
Sat - Sun: 12pm - 5pm



PLUS RECEIVE YOUR OWN TRICO RED CARD



**& ENJOY INCREDIBLE
ONGOING SAVINGS &
REWARDS FROM OUR
PARTNERS & RETAILERS**



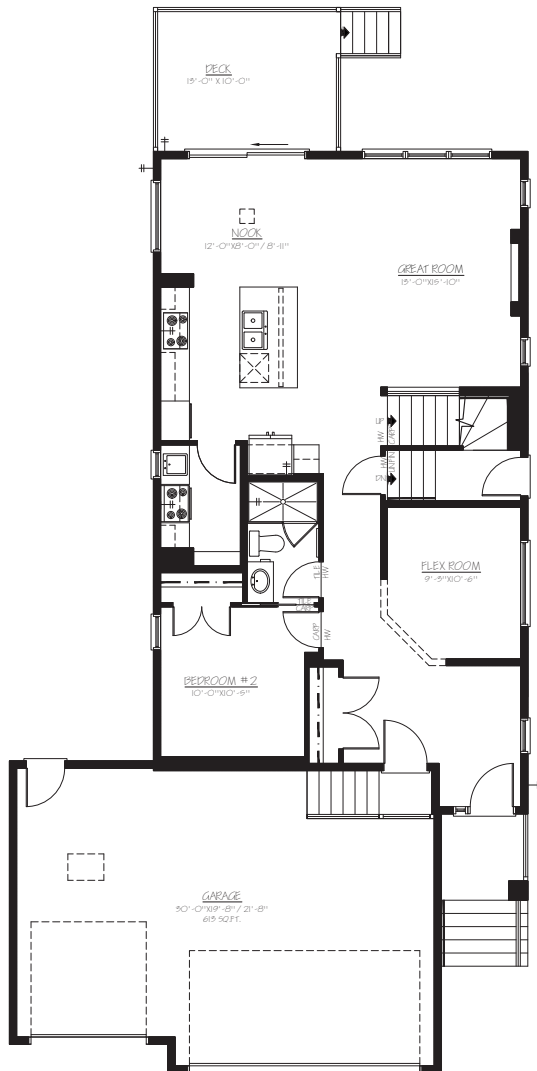
tricohomes.com



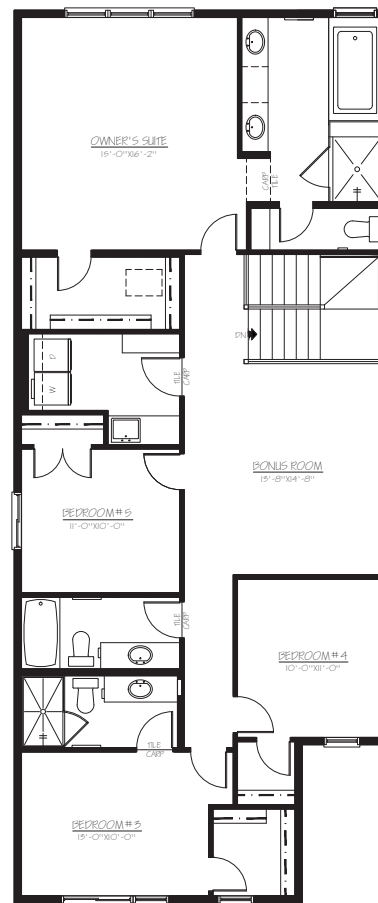
THE SPRINGHILL

2684 SQ.FT.

151 Dawson Wharf Mount



MAIN
1138 SQ.FT.



UPPER
1546 SQ.FT.



Renderings are artist's conceptions only and may vary by community and lot selection. Prices, floorplans, specifications and dimensions are approximate and are subject to change without notice. E.&OE. © All rights reserved, including the right if reproduction in the whole or in part without the permission of Trico Homes.

Plan updated June 25, 2025



tricohomes.com