



IMMEDIATE POSSESSION



THE REGENT 1301 SQ.FT.

122 - 285 Chelsea Court



2 Bedrooms



2½ Bathrooms



Single Garage

OPTIONS INCLUDED IN THIS HOME ARE:

- Minutes away from local amenities, including eco-park, green spaces, schools, plaza & East Hills Shopping Centre
- Hardie Board siding exterior
- Moonlight standard colour palette
- Entry level closed flex room
- 9' Knock-down ceilings on entry & main floor
- Open concept main floor
- Upgraded semi-built-in kitchen with appliances
- Zebra blinds
- Dual bedrooms with separate ensuites & walk-in closets
- 4-Piece owner's ensuite
- A/C rough-ins

COME VISIT OUR SHOWHOME

115 & 116 - 285 Chelsea Court, Chestermere, AB

Call Sam Bibanco today at 825.540.0437 or
email at chelseacourt@tricohomes.com



THE MONARCH



THE REGENT

SHOWHOME HOURS:

Mon - Thurs: 2pm - 8pm

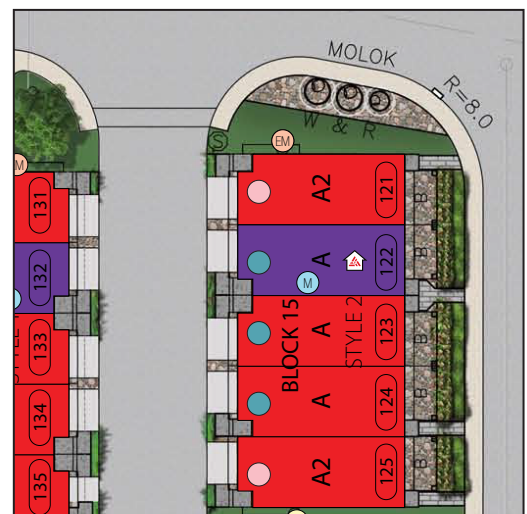
Fri: Closed

Sat - Sun: 12pm - 5pm

**PLUS RECEIVE YOUR OWN
TRICO RED CARD**



**& ENJOY INCREDIBLE
ONGOING SAVINGS &
REWARDS FROM OUR
PARTNERS & RETAILERS**



**Chelsea
Court**
TOWNHOMES

**Trico
Homes™**
The Heart of Homebuilding®



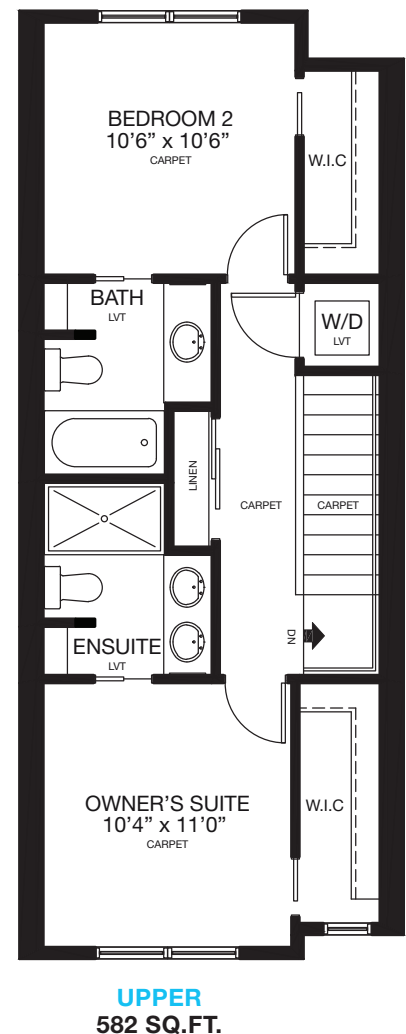
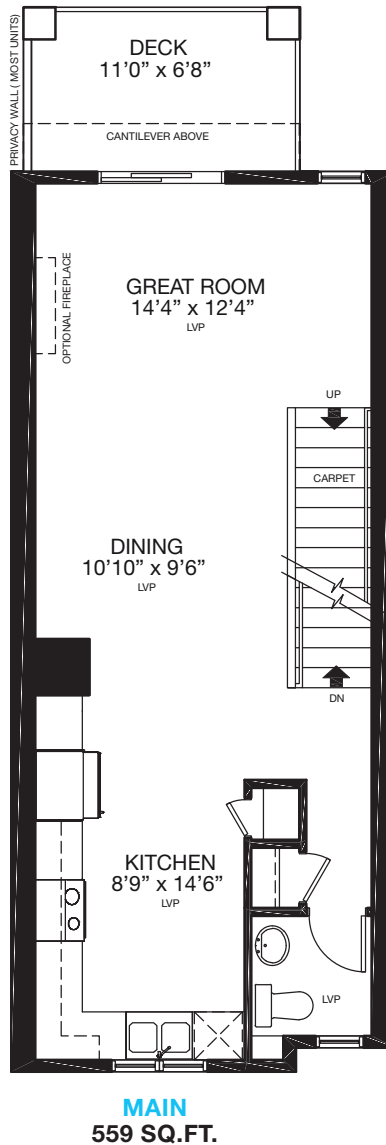
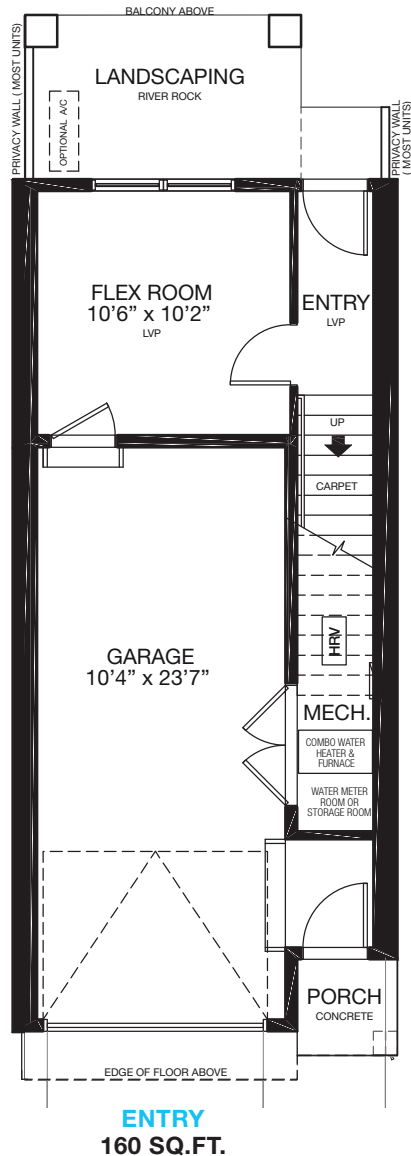
tricohomes.com



THE REGENT

1301 SQ.FT.

122 - 285 Chelsea Court



Renderings are artist's conceptions only and may vary by community and lot selection. Prices, floorplans, specifications and dimensions are approximate and are subject to change without notice. E.&O.E. © All rights reserved, including the right if reproduction in the whole or in part without the permission of Trico Homes.

Plan updated September 22, 2025



tricohomes.com