



## SEPTEMBER POSSESSION



# THE SPRINGFIELD

3249 SQ.FT.

229 Homestead Crescent NE



5 Bedrooms



4½ Bathrooms



Triple Garage

### OPTIONS INCLUDED IN THIS HOME ARE:

- Corner homesite next to paved lane
- Main floor bedroom with full bathroom
- 42" Upper cabinetry & crown moulding in kitchen
- Quartz kitchen countertops
- Spice kitchen with walk-through pantry
- Electric fireplace in great room
- Hardwood throughout main floor
- Open-to-below from upper central bonus room
- 4 Bedroom floorplan, with dual ensuite
- 5-Piece owner's ensuite & walk-through closet to laundry room
- Front entry designed with double doors
- 4' Width added to attached triple-car garage
- 18' x 10' Rear deck with aluminum glass railings
- 9' Foundation

### COME VISIT OUR SHOWHOMES

293 & 297 Homestead Terrace NE, Calgary, AB

Call Ali Tahir today at 403.798.9550 or  
email at [homestead@tricohomes.com](mailto:homestead@tricohomes.com)



### SHOWHOME HOURS:

Mon - Thurs: 2pm - 8pm

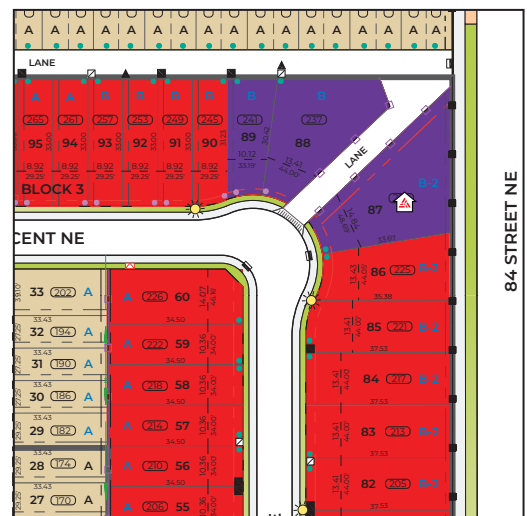
Fri: Closed

Sat - Sun: 12pm - 5pm

### PLUS RECEIVE YOUR OWN TRICO RED CARD



& ENJOY INCREDIBLE  
ONGOING SAVINGS &  
REWARDS FROM OUR  
PARTNERS & RETAILERS



**Homestead**  
plant your roots

**Trico  
Homes™**  
The Heart of Homebuilding®



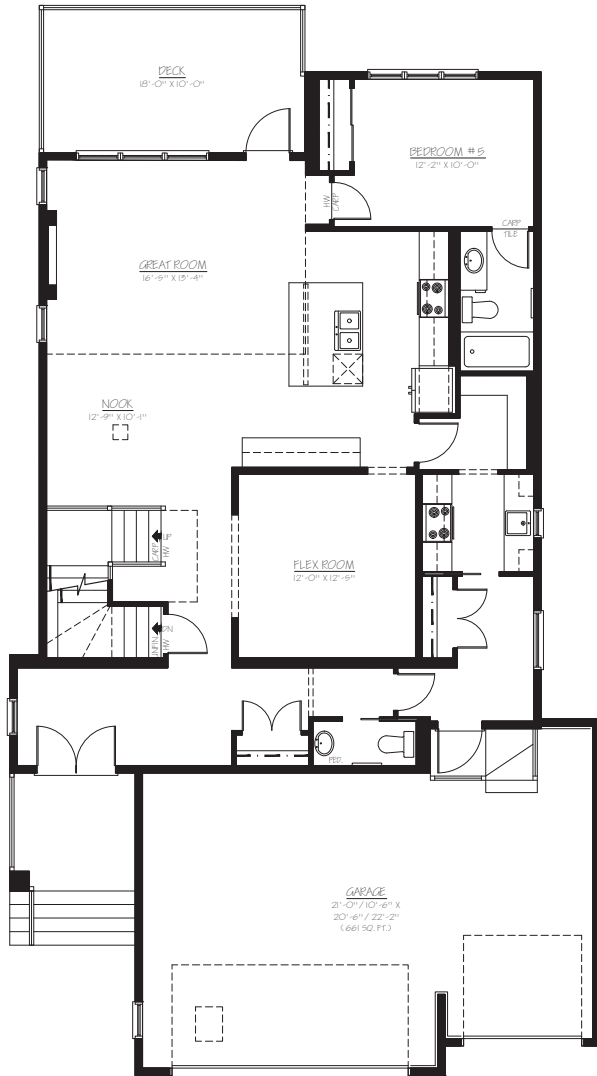
[tricohomes.com](http://tricohomes.com)



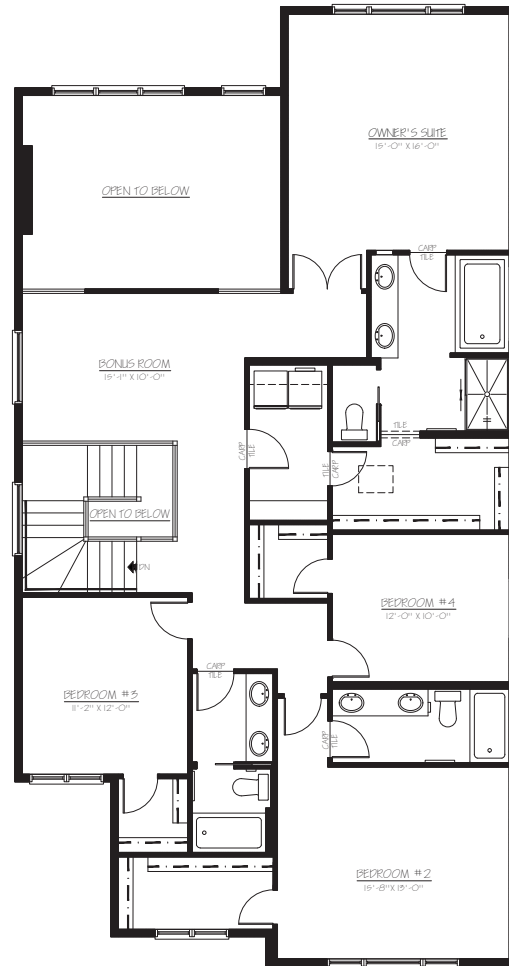
# THE SPRINGFIELD

3249 SQ.FT.

229 Homestead Crescent NE



**MAIN**  
1494 SQ.FT.



**UPPER**  
1755 SQ.FT.



Renderings are artist's conceptions only and may vary by community and lot selection. Prices, floorplans, specifications and dimensions are approximate and are subject to change without notice. E.&O.E. © All rights reserved, including the right if reproduction in the whole or in part without the permission of Trico Homes.

Plan updated September 30, 2024



tricohomes.com