


← 34' →
Min. Lot Width

 3 Bedrooms

 2½ Bathrooms

 Double Garage

THE ROSEWOOD

2472 SQ.FT.

Elements Specification

Elite Specification



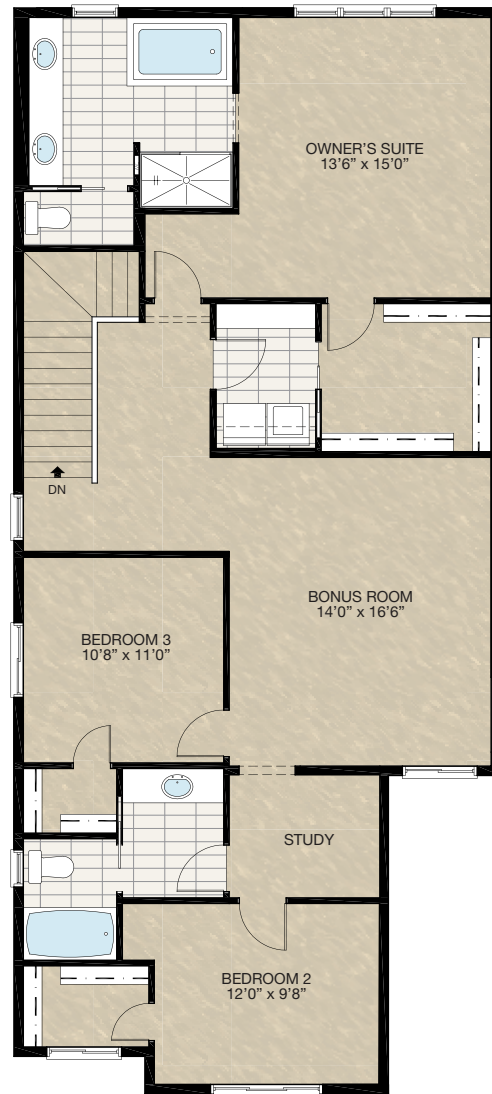
Trico Homes™
The Heart of Homebuilding®

STANDARD PLAN

THE
ROSEWOOD
2472 SQ.FT.



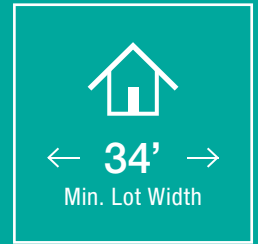
MAIN
1080 SQ.FT.



UPPER
1392 SQ.FT.



FEATURED OPTIONS



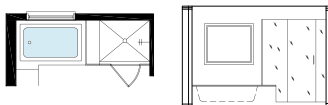
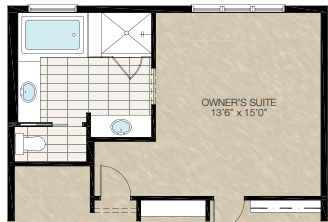
SELECT-1 DINING ROOM WITH BUTLER'S PANTRY OPTION

- Delete pantry & add upper & lower cabinets
- Delete upper & lower cabinets beside the fridge & replace with full-height cabinet pantry
- Delete mudroom closet & add lockers
- Open up wall between hallway & dining room with a DBH
- Extend beam & move post to wall beside half bath. This will alter the beam & post locations below as well



SELECT-4 ENSUITE OPTION

- Delete fibreglass shower & add tile & 10mm glass shower
- Separate vanity into two 5' vanities
- Change window size to 48" x 40"



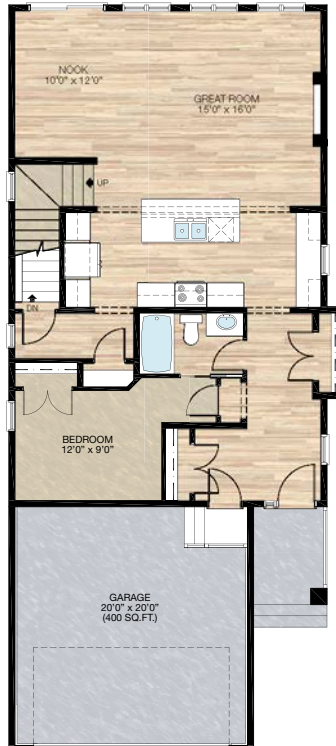
SELECT-2 JACK & JILL BATHROOM OPTION

- Add a second door & 3-way switch
- Extend vanity & add a second sink



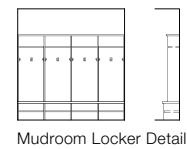
SELECT-5 MAIN FLOOR BEDROOM OPTION

- Flex room becomes bedroom & mudroom is deleted
- Reduce window width from 30" x 72" to 24" x 72"
- Add a tub/shower to half bath & a 2'6" pocket door
- Move mudroom closet to front entry



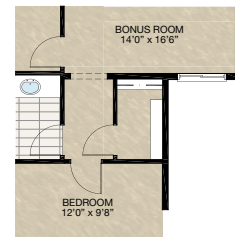
SELECT-3 MAIN FLOOR OFFICE OPTION

- Flex room becomes office
- Add a tub/shower to half bath & a 2'6" pocket door
- Delete mudroom closet & install lockers
- Pantry is reduced

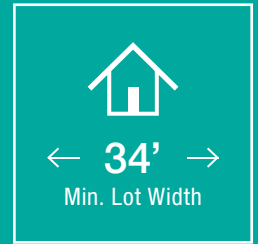


SELECT-6 STORAGE ROOM OPTION

- Convert study into storage room



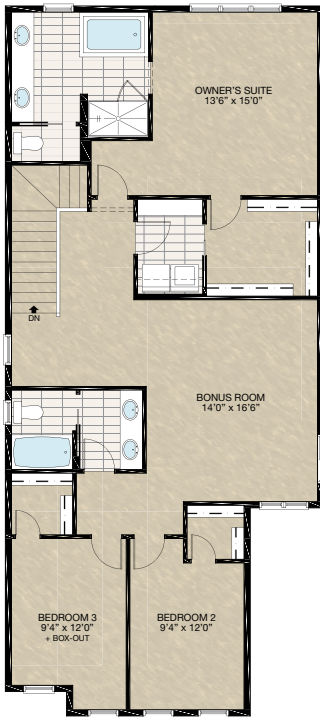
FEATURED ROSEWOOD OPTIONS



SELECT-10 ALTERNATIVE UPPER FLOOR OPTION

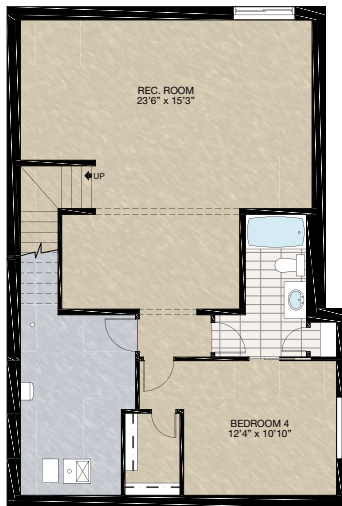
- Relocate Bedroom 3
- Relocate main bath
- Add 2nd sink & light outlet to main bath with larger vanity

*NOTE: Some elevation may required modification to front windows for this option



SELECT-11 BASEMENT DEVELOPMENT OPTION 2

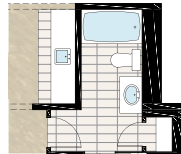
- 814 Sq.Ft. basement development
 - Included finished basement stairwell
 - Move 2'8" passage door from top of stairwell to mechanical room
 - Add 1 riser to stairwell for 9'0" basement ceiling (8'9" headroom clearance)
 - Windows changed from 60" x 24" to 60" x 36"
- *NOTE: This basement development only for elevations with extended front entry



SELECT-11A WET BAR OPTION

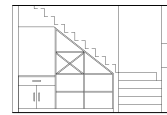
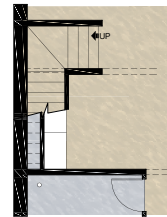
- Add 7'9" wet bar with bar sink & lower cabinetry only
- 1 Row of tile in front of wet bar

*NOTE: Must combined with **SELECT-11** Basement Development Option



SELECT-11B UNDERSTAIR DEVELOPMENT OPTION

- Additional 16 sq.ft. of basement development
- Add 36" wide & 24" deep lower cabinetry with counter
- Add puck light & switch & one electrical outlet to counter
- Add built-in open shelving
- Add wall to both sides of built-in to enclosed the developed area

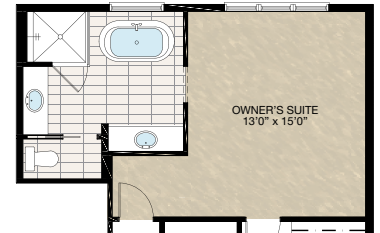


UNDERSIDE STAIR BUILT-IN DETAIL

This is only general layout of built-in. Please refer to cabinetry supplier layout for materials & exact dimension.

SELECT-12 ALTERNATE ENSUITE OPTION

- Extend bathroom 6" into bedroom
- Delete acrylic shower base + 6mm sliding glass door & add shower w/tile + 10mm glass
- Delete tub + tub deck & add freestanding tub
- Separate vanity into two 5'0" / 5'6" vanities
- Change window size to 48"x 40"

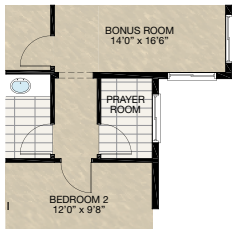


FEATURED OPTIONS

THE
ROSEWOOD
2472 SQ.FT.

SELECT-7 PRAYER ROOM OPTION

- Convert study into prayer room
- Tile flooring
- Add window



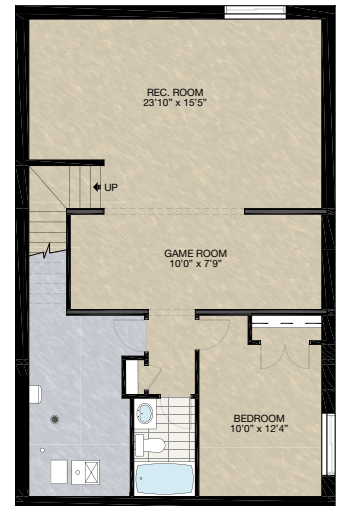
SELECT-8 FOUR BEDROOM OPTION

- Delete bonus room
- Add fourth bedroom with full ensuite & walk-in closet
- Delete one 48" x 32" window



SELECT-9 BASEMENT DEVELOPMENT OPTION

- 791 Sq.Ft. of developed area
- Includes finished basement stairwell
- Move 2'8" passage door from top of stairwell to mech. room
- Add one riser to stairwell for 9' basement ceiling (8'9" headroom clearance)
- 60" x 24" Windows changed to 60" x 36"
- * Please note for "C" elevations bedroom will be 2'0" wider & total developed area will be 825 sq.ft.



Trico Homes is a local home builder, with new single and multi-family homes for sale in Calgary, Okotoks, Chestermere, Cochrane, Airdrie and DeWinton. Offering a great selection of starter, move-up, semi-estate and ultra-estate models in numerous communities, you'll find the house that's just right for you! Look for this model and many others in Ambleton, Arbour Lake, Belmont, Carrington, Chelsea, Cornerbrook, D'Arcy, Dawson's Landing, Glacier Ridge, Hamilton Heights, Homestead, Legacy, Midtown, Pine Creek, Precedence, Rivercrest, Seton, Sirocco, Verona West Townhomes, West83 Townhomes and Wolf Willow.



Renderings are artist's conceptions only and may vary by community and lot selection. Prices, floorplans, specifications and dimensions are approximate and are subject to change without notice. E.&O.E. © All rights reserved, including the right if reproduction in the whole or in part without the permission of Trico Homes.

Plan updated as of October 04, 2024.



tricohomes.com