



AUGUST POSSESSION



THE REGENT 1179 SQ.FT.

82 - 285 Chelsea Court

2 Bedrooms

2½ Bathrooms

Tandem Garage

OPTIONS INCLUDED IN THIS HOME ARE:

- Minutes away from local amenities, including eco-park, green spaces, schools, plaza & East Hills Shopping Centre
- Homesite facing main road
- Charcoal standard colour palette
- Open concept main floor
- Upgraded semi-built-in kitchen with appliances
- Quartz countertops
- Zebra blinds
- Dual bedrooms with separate ensuites & walk-in closets
- 4-Piece owner's ensuite
- A/C rough-ins
- Gas line to deck

COME VISIT OUR SHOWHOME

259 Chelsea Road, Chestermere, AB
Call Sam Bibanco today at 587.496.8192 or email at chelseacourt@tricohomes.com



SHOWHOME HOURS:

Mon - Thurs: 2pm - 8pm

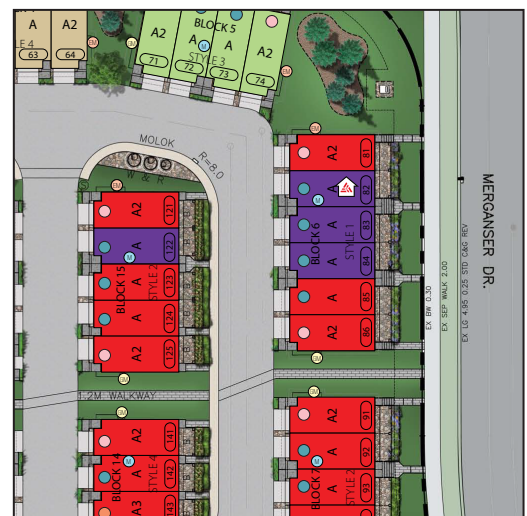
Fri: Closed

Sat - Sun: 12pm - 5pm

PLUS RECEIVE YOUR OWN TRICO RED CARD



**& ENJOY INCREDIBLE
ONGOING SAVINGS &
REWARDS FROM OUR
PARTNERS & RETAILERS**



Chelsea Court

TOWNHOMES

Trico Homes™

The Heart of Homebuilding®



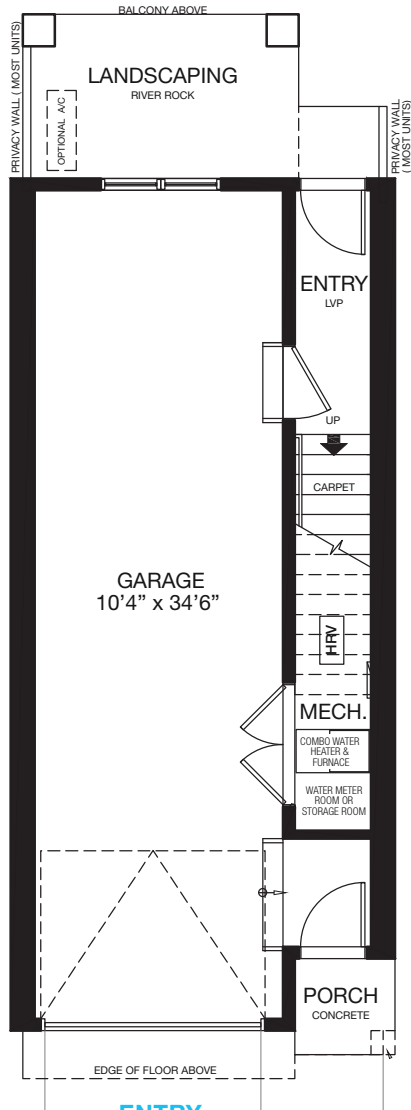
tricohomes.com



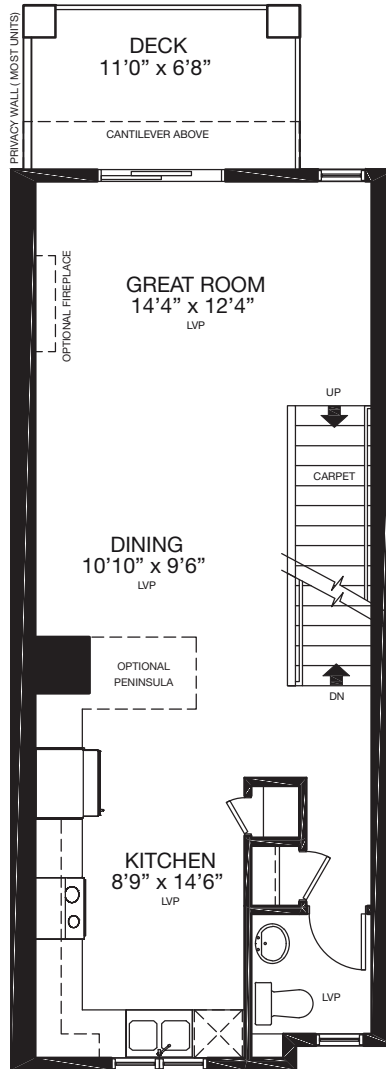
THE REGENT

1179 SQ.FT.

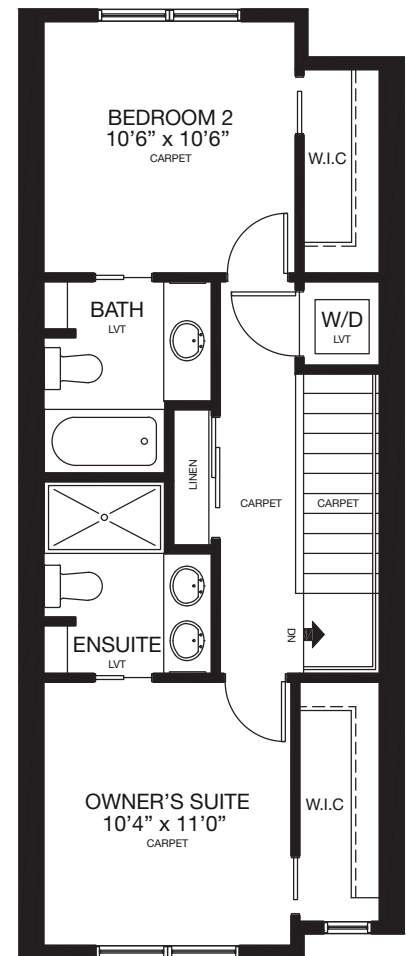
82 - 285 Chelsea Court



ENTRY
38 SQ.FT.



MAIN
559 SQ.FT.



UPPER
582 SQ.FT.



Renderings are artist's conceptions only and may vary by community and lot selection. Prices, floorplans, specifications and dimensions are approximate and are subject to change without notice. E.&O.E. © All rights reserved, including the right if reproduction in the whole or in part without the permission of Trico Homes.

Plan updated February 4, 2025



trichomes.com