



**JANUARY 2026 POSSESSION**



# THE BRAVO 1600 SQ.FT.

**623 Chelsea Pier Run**



3 Bedrooms



3 Bathrooms

## OPTIONS INCLUDED IN THIS HOME ARE:

- South-facing backyard
- Open concept main floor
- Walk-in pantry
- Hardwood, tile & carpet throughout
- 4-Piece owner's ensuite
- Spacious owner's suite walk-in closet
- Legal secondary suite rough-ins in basement with separate entrance
- Rear deck with stairs to grade & aluminum railing
- Paved lane & concrete parking pad
- 9' Foundation

## COME VISIT OUR SHOWHOMES

**419 Chelsea Port Crossing, Chestermere AB**

Call Matthew Lysaght or David Bell today at

403.651.9666 or email at [chelsealined@tricohomes.com](mailto:chelsealined@tricohomes.com)



### SHOWHOME HOURS:

**Mon - Thurs: 2pm - 8pm**

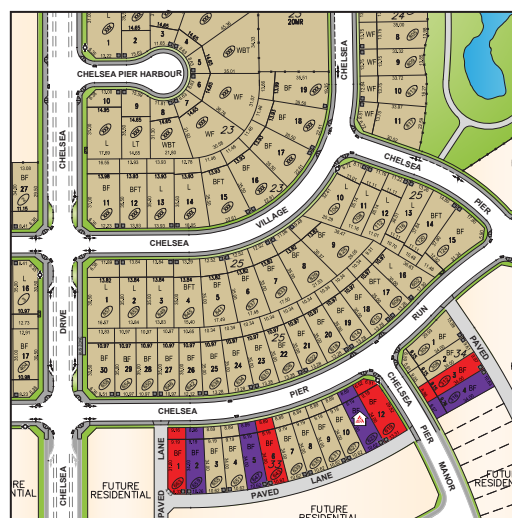
**Fri: Closed**

**Sat - Sun: 12pm - 5pm**

## ASK ABOUT OUR TRICO RED CARD REWARDS



**YOU DECIDE  
HOW TO REWARD  
YOURSELF!**



**CHELSEA**  
CHESTERMERE

**Trico  
Homes™**  
The Heart of Homebuilding®



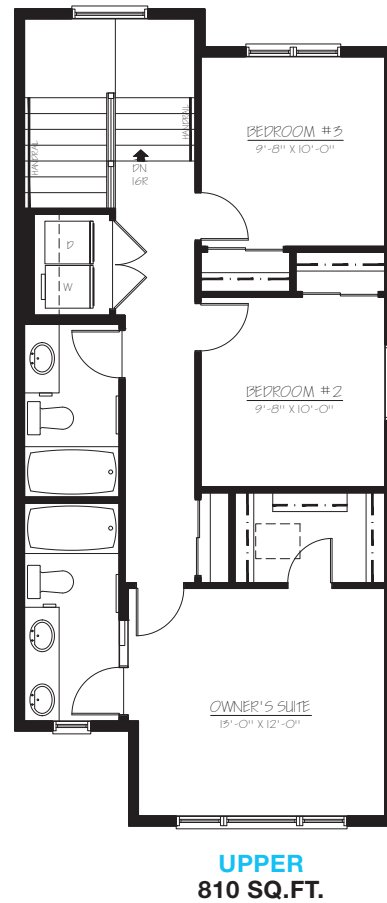
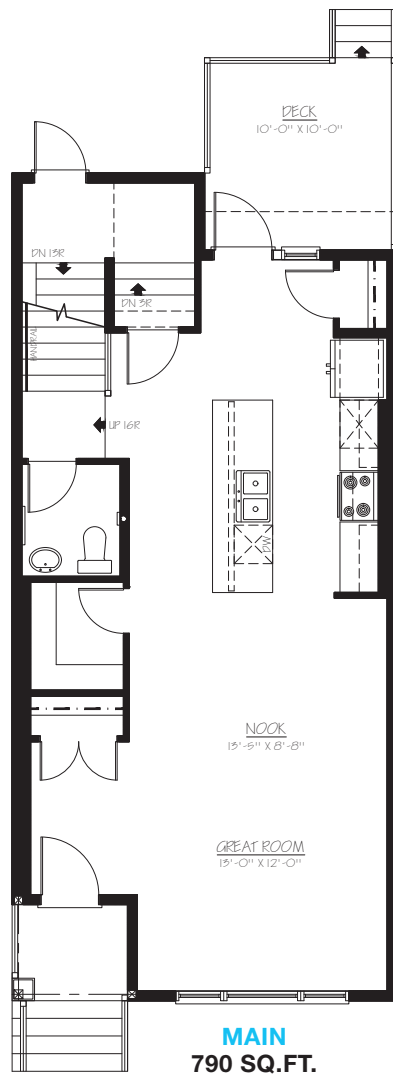
[tricohomes.com](http://tricohomes.com)



# THE BRAVO

1600 SQ.FT.

623 Chelsea Pier Run



Renderings are artist's conceptions only and may vary by community and lot selection. Prices, floorplans, specifications and dimensions are approximate and are subject to change without notice. E.&O.E. © All rights reserved, including the right of reproduction in the whole or in part without the permission of Trico Homes.

Plan updated August 25, 2025



tricohomes.com