



APRIL 2025 POSSESSION



THE OXFORD

1948 SQ.FT.

194 Wolf Hollow Crescent SE

3 Bedrooms 2½ Bathrooms Double Garage

OPTIONS INCLUDED IN THIS HOME ARE:

- Homesite near Fish Creek Provincial Park & has rear paved lane
- Stainless steel appliances in kitchen
- Quartz kitchen countertops
- Electric fireplace in great room
- 9' Knock-down ceilings on main
- Central bonus room on upper floor
- 5-Piece owner's ensuite with spacious walk-in closet
- Secondary bedrooms each include walk-in closets
- 9' Foundation
- Gas line to deck
- Rear deck with aluminum railings & stairs to grade
- Side entrance

COME VISIT OUR SHOWHOMES

103 & 107 Wolf Creek Rise SE, Calgary, AB

Call Desirae Gersmeid today at 403.457.0856 or email at wolfwillow@tricohomes.com



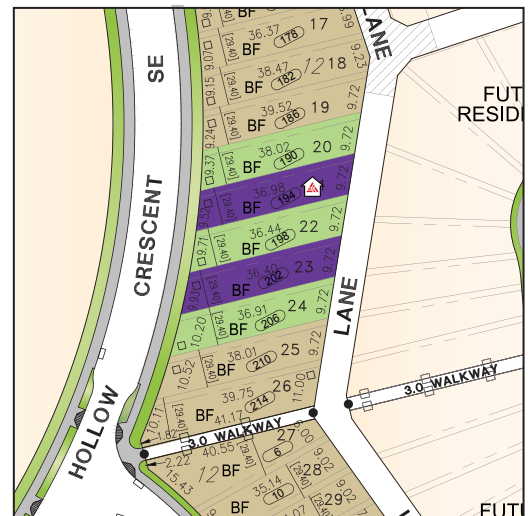
SHOWHOME HOURS:

Mon - Thurs: 2pm - 8pm
Fri: Closed
Sat - Sun: 12pm - 5pm

PLUS RECEIVE YOUR OWN **TRICO RED CARD**



& ENJOY INCREDIBLE ONGOING SAVINGS & REWARDS FROM OUR PARTNERS & RETAILERS



WOLF WILLOW



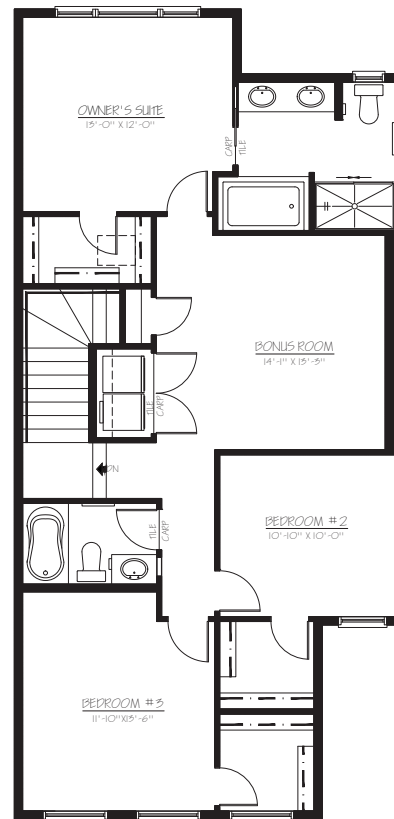
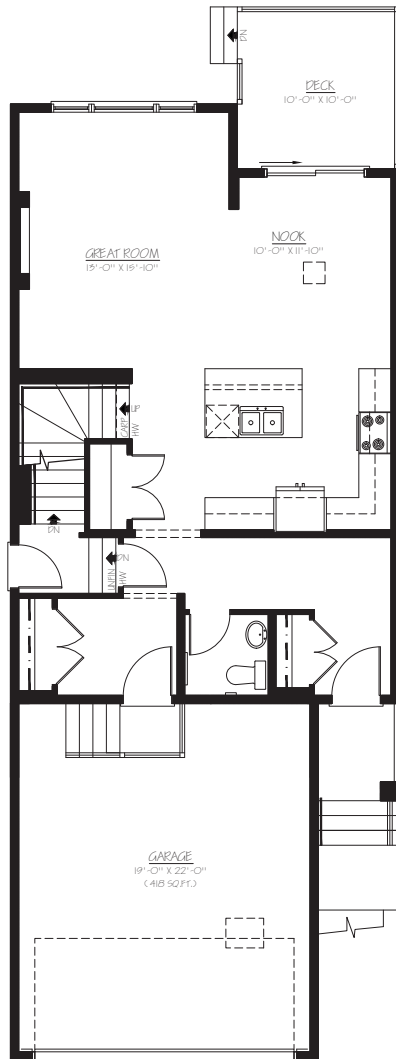
tricohomes.com



THE OXFORD

1948 SQ.FT.

194 Wolf Hollow Crescent SE



Renderings are artist's conceptions only and may vary by community and lot selection. Prices, floorplans, specifications and dimensions are approximate and are subject to change without notice. E.&O.E. © All rights reserved, including the right of reproduction in the whole or in part without the permission of Trico Homes.

Plan updated October 10, 2024



tricohomes.com