



AUGUST POSSESSION



THE OXFORD II ZLL 2078 SQ.FT.

137 Legacy Reach Crescent SE



3 Bedrooms



2½ Bathrooms



Double Garage

OPTIONS INCLUDED IN THIS HOME ARE:

- Home backing onto the environmental reserve, with views of the Bow River & downtown
- 2-Bedroom secondary suite in basement
- Flex room on main floor
- Gas range to stove with built-in microwave & chimney hood fan
- Quartz countertops in kitchen
- 3 Bedrooms with a central bonus room on upper floor
- 5-Piece owner's ensuite with tile & glass shower
- 9' Foundation
- Rear deck with gas line to deck

**PLUS RECEIVE YOUR OWN
TRICO RED CARD**

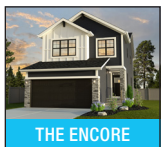


**& ENJOY INCREDIBLE
ONGOING SAVINGS &
REWARDS FROM OUR
PARTNERS & RETAILERS**

COME VISIT OUR SHOWHOMES

416 & 418 Legacy Circle SE, Calgary AB

Call Clint Pilon today at 403.474.1545 or
email at legacy@tricohomes.com



THE ENCORE



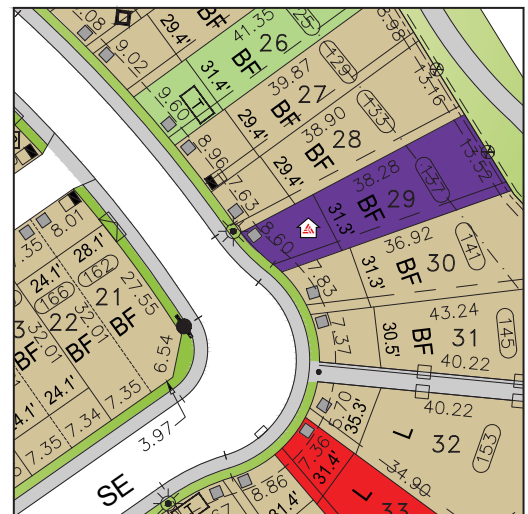
THE OXFORD II

SHOWHOME HOURS:

Mon - Thurs: 2pm - 8pm

Fri: Closed

Sat - Sun: 12pm - 5pm



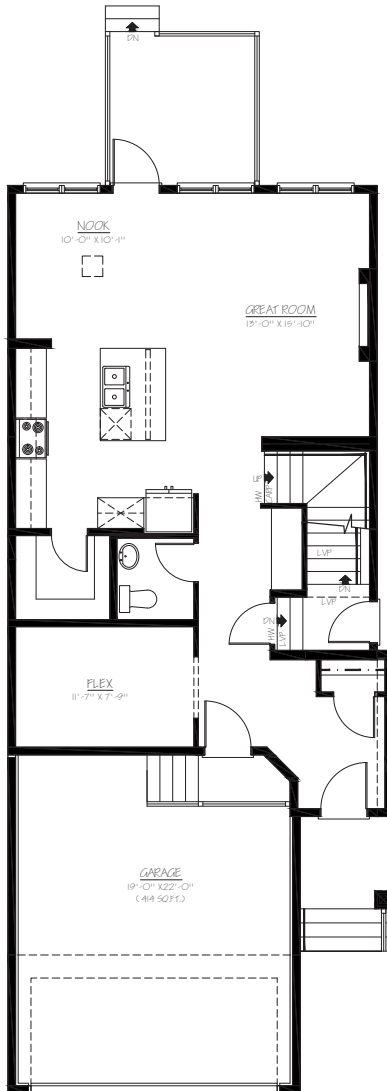
tricohomes.com



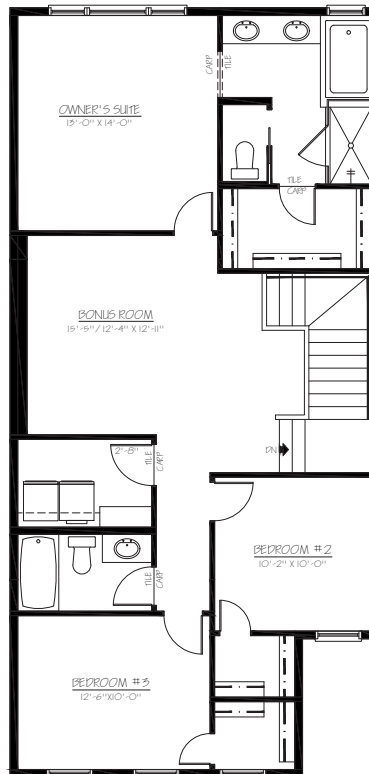
THE OXFORD II ZLL

2078 SQ.FT.

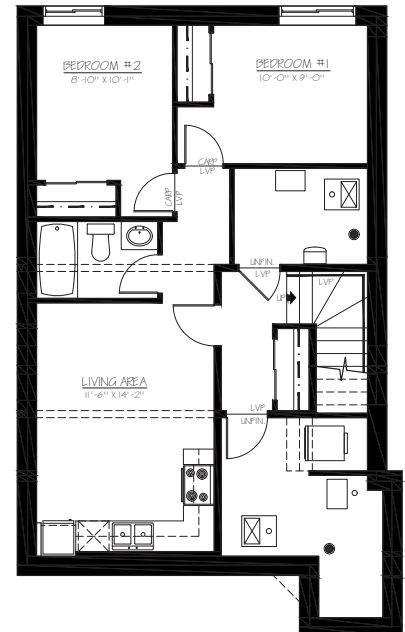
137 Legacy Reach Crescent SE



MAIN
923 SQ.FT.



UPPER
1155 SQ.FT.



SECONDARY SUITE
608 SQ.FT.



Renderings are artist's conceptions only and may vary by community and lot selection. Prices, floorplans, specifications and dimensions are approximate and are subject to change without notice. E.&O.E. © All rights reserved, including the right if reproduction in the whole or in part without the permission of Trico Homes.

Plan updated May 20, 2025



tricohomes.com

