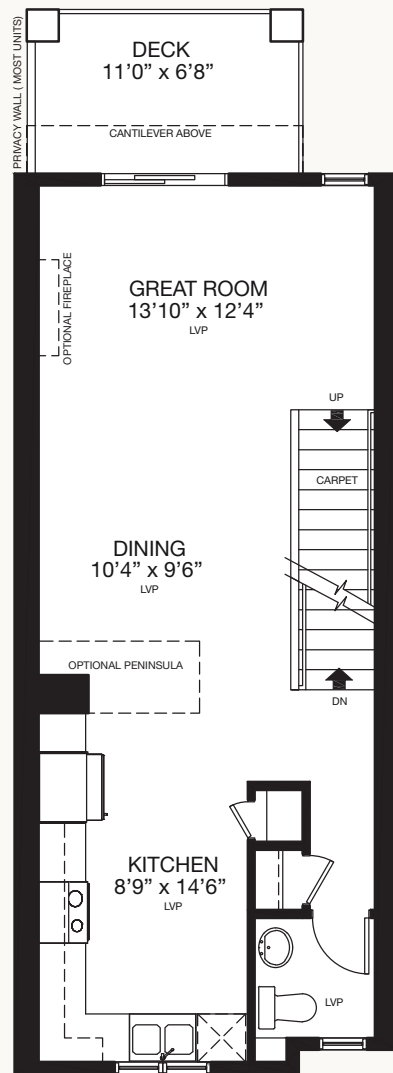
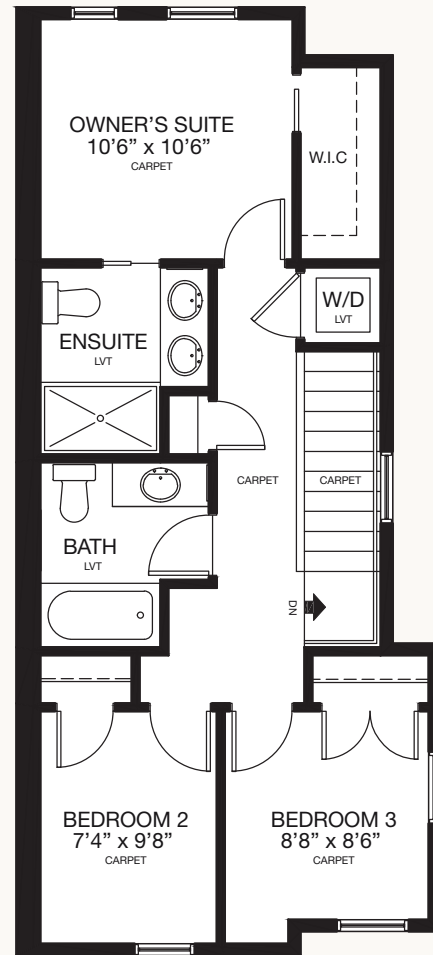


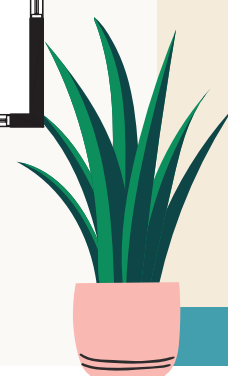
**ENTRY LEVEL**  
44 SQ.FT.



**MAIN LEVEL**  
559 SQ.FT.



**UPPER LEVEL**  
612 SQ.FT.



# Chelsea Court

TOWNHOMES

# MONARCH

**1215 SQ.FT.**

Type A2 End Unit 1 – 15'

3 Bedrooms  
2.5 Baths  
Tandem Garage

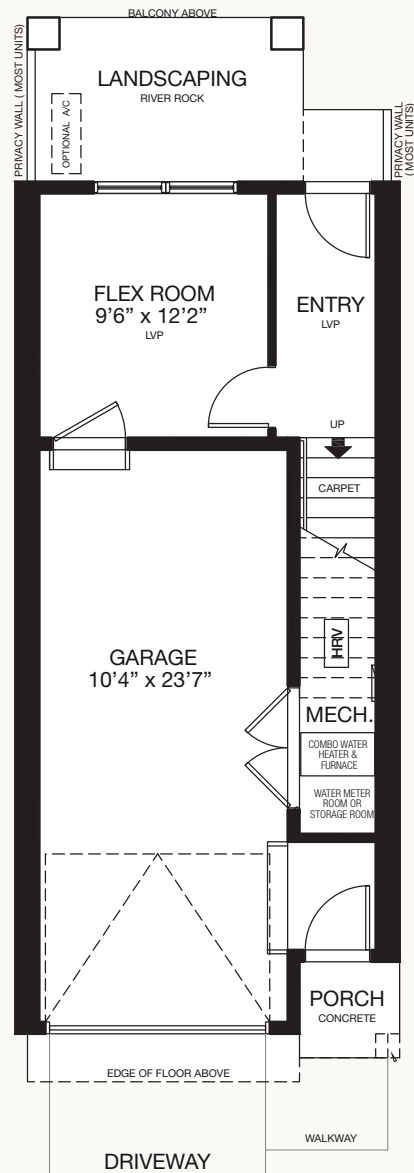
259 Chelsea Road  
Chestermere, AB

587.496.8192  
ChelseaCourt@TricoHomes.com

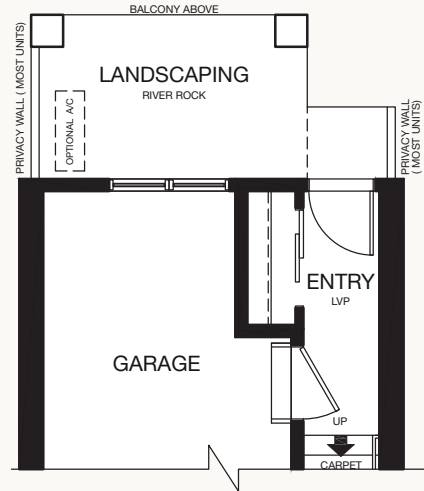
[ChelseaCourtTownhomes.ca](http://ChelseaCourtTownhomes.ca)

\* Floorplans & renderings are artist's concept only and may be subject to change without notice. Builder reserves the right to make modifications and changes to building design, specifications, features and floorplans without notice. Measurements and areas shown are based on pre-construction estimates and are approximate only. E.&O.E. Windows locations and sizes on these renderings are dependent on building location and elevation as approved by the City of Chestermere, confirm with your sales representative exact locations.

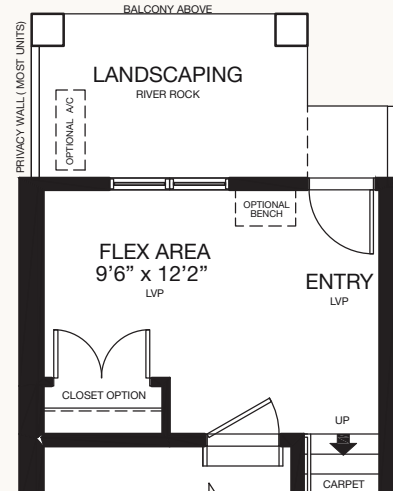
# OPTIONS



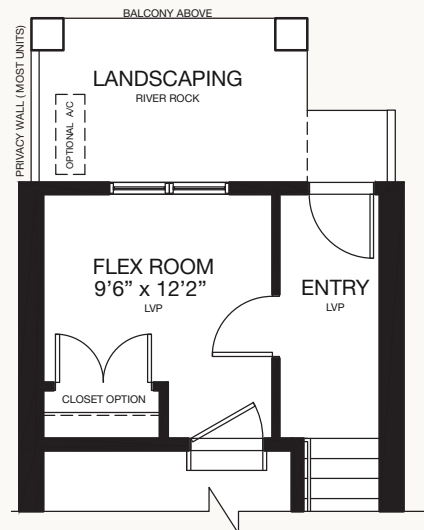
**FLEX ROOM OPTION**  
165 SQ.FT.



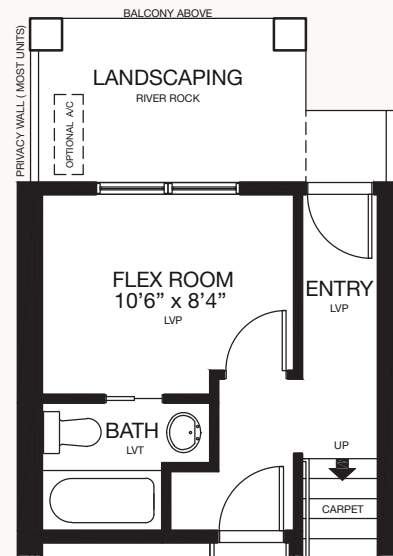
**ENTRY LEVEL CLOSET OPTION**  
61 SQ.FT.



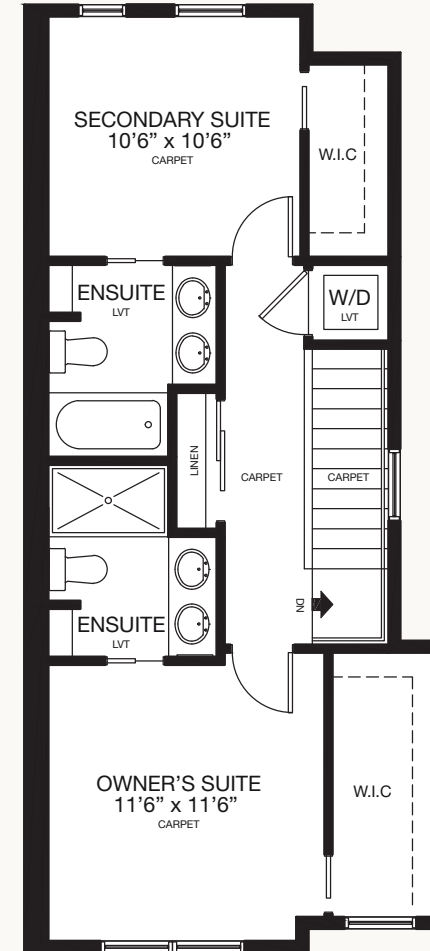
**ENTRY LEVEL OPEN FLEX ROOM OPTION**  
165 SQ.FT.



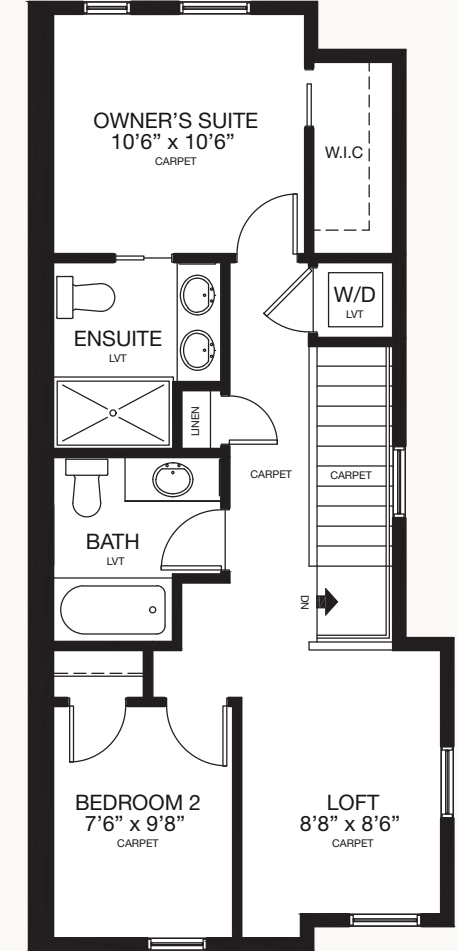
**ENTRY LEVEL FLEX ROOM OPTION II**  
165 SQ.FT.



**ENTRY LEVEL FULL BATH OPTION**  
206 SQ.FT.



**UPPER FLOOR OPTION I**  
612 SQ.FT.



**UPPER FLOOR OPTION II**  
612 SQ.FT.

\* Floorplans & renderings are artist's concept only and may be subject to change without notice. Builder reserves the right to make modifications and changes to building design, specifications, features and floorplans without notice. Measurements and areas shown are based on pre-construction estimates and are approximate only. E.&O.E. Windows locations and sizes on these renderings are dependent on building location and elevation as approved by the City of Chestermere, confirm with your sales representative exact locations.