

  
← 24' →  
Min. Lot Width

 3 Bedrooms

 2½ Bathrooms

# THE MANSFIELD DUPLEX

1460 SQ.FT.

Elements Specification

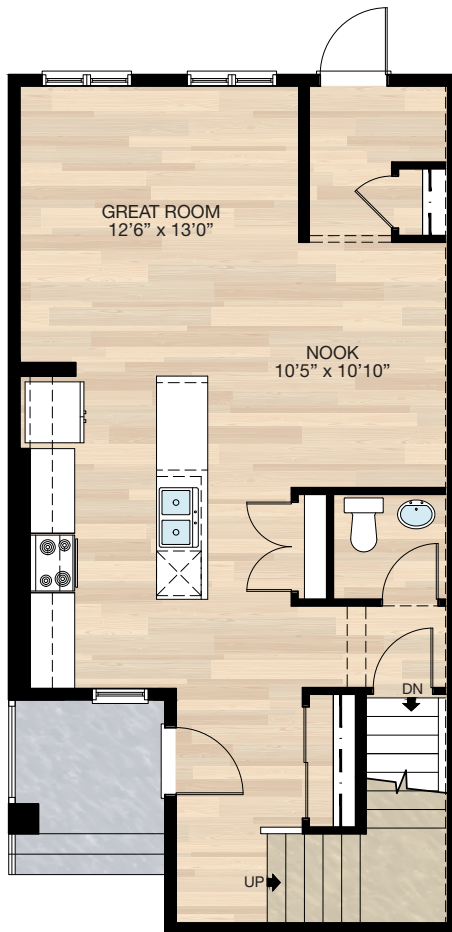
Elite Specification



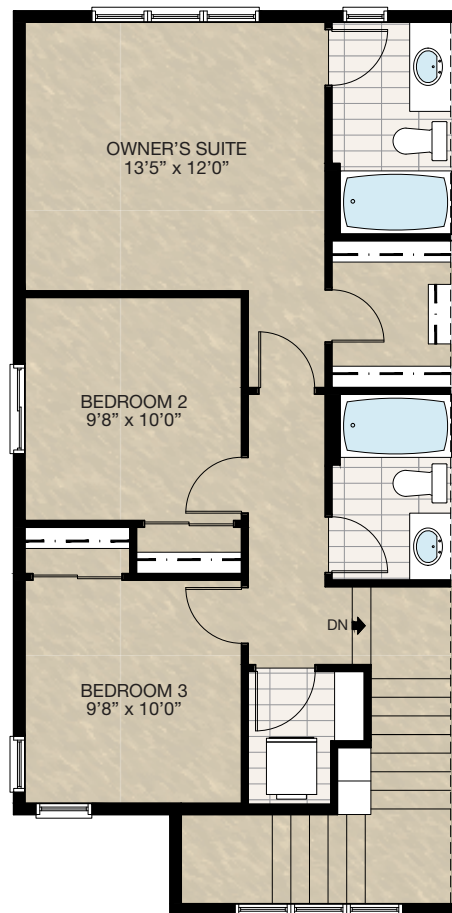
Trico Homes™  
The Heart of Homebuilding®

# STANDARD PLAN

THE  
MANSFIELD  
DUPLEX  
1460 SQ.FT.



**MAIN**  
697 SQ.FT.



**UPPER**  
763 SQ.FT.

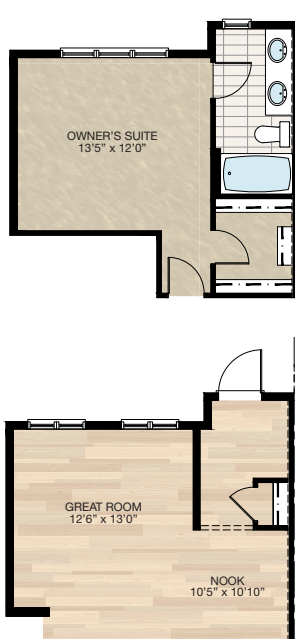


# FEATURED OPTIONS



## SELECT-1 ENSUITE SUITE OPTION

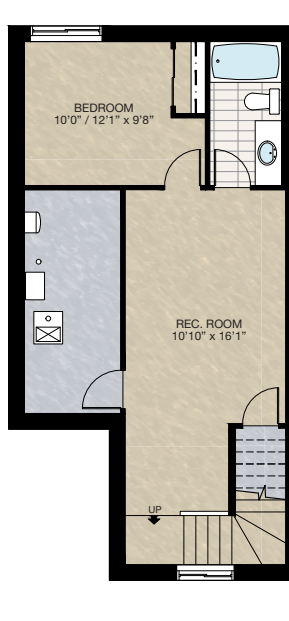
- Additional 25 sq.ft to total area
- Ensuite 2'0" extension to rear
- Main floor extension to rear entrance
- Add 2<sup>nd</sup> sink and additional 24" vanity to ensuite



Main Floor Revision For Ensuite Option

## SELECT-2 BASEMENT DEVELOPMENT OPTION 1

- 448 Sq.Ft. basement development
- Included finished basement stairwell
- Add 1 risers to stairwell for 9'0" basement ceiling (8'9" headroom clearance)
- Add 48" x 36" DBSL window to front
- Upgrade rear window 60" x 24" DHSL to 60" x 36" DHSL



## SELECT-3 BASEMENT DEVELOPMENT OPTION 2

- 490 Sq.Ft. basement development
- Included finished basement stairwell
- Add 1 risers to stairwell for 9'0" basement ceiling (8'9" headroom clearance)
- Add 48" x 36" DBSL window to side
- Upgrade & relocated rear window to side from 60" x 24" DHSL to 60" x 36" DHSL

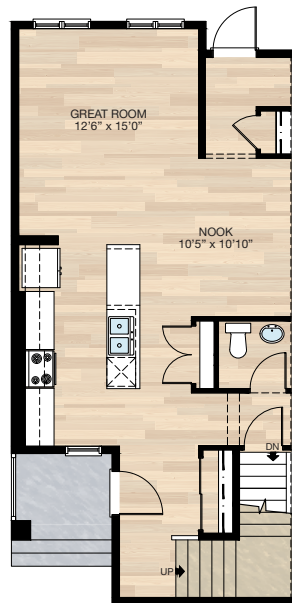
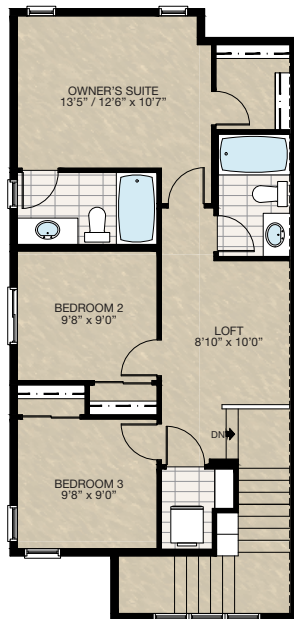


# FEATURED OPTIONS

THE  
MANSFIELD  
DUPLEX  
1460 SQ.FT.

## SELECT-4 UPPER FLOOR LOFT OPTION

- 2'0" x 13'6" Rear extension to both main & upper floor and foundation below
- Additional 54 sq.ft.
- Bedrooms size reduced to accommodate loft space
- Reduced shelving in master bedroom closet
- Delete 3 - 30" x 60" P/P, VSL, P/P window at owner's suite
- Add 24" x 40" CSMT over 24" x 24" P window to owner's suite
- Add 24" x 40" P over 24" x 24" P window to owner's suite
- Delete 24" x 60" VSL window to ensuite
- Add 24" x 36" VSL window to ensuite



## MAIN FLOOR REVISION FOR SELECT-4 UPPER FLOOR OPTION

- 2'0" Added to great room and foundation below

Trico Homes is a local home builder, with new single and multi-family homes for sale in Calgary, Okotoks, Chestermere, Cochrane, Airdrie and DeWinton. Offering a great selection of starter, move-up, semi-estate and ultra-estate models in numerous communities, you'll find the house that's just right for you! Look for this model and many others in Ambleton, Arbour Lake, Belmont, Carrington, Chelsea, Cornerbrook, D'Arcy, Dawson's Landing, Glacier Ridge, Hamilton Heights, Homestead, Legacy, Midtown, Pine Creek, Precedence, Rivercrest, Seton, Sirocco, Verona West Townhomes, West83 Townhomes and Wolf Willow.



Renderings are artist's conceptions only and may vary by community and lot selection. Prices, floorplans, specifications and dimensions are approximate and are subject to change without notice. E.&O.E. © All rights reserved, including the right if reproduction in the whole or in part without the permission of Trico Homes.

Plan updated as of October 04, 2024.



tricohomes.com