
 4 Bedrooms

 3½ Bathrooms

 Double Garage

THE RIVERSIDE

3286 SQ.FT.

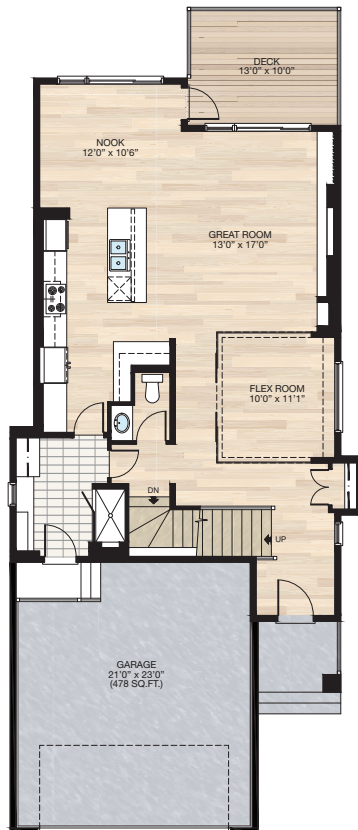
137 WOLF HOLLOW VILLAS SE



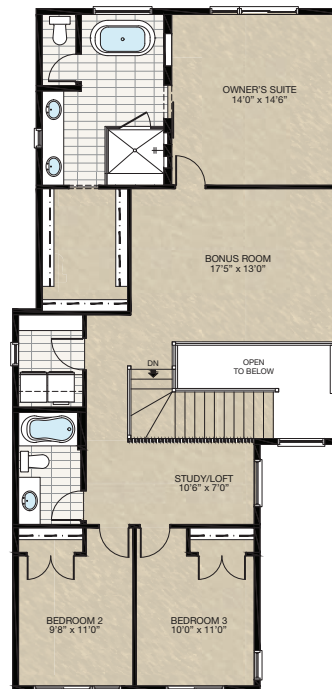
Trico Homes™
The Heart of Homebuilding®

STARS LOTTERY HOME PLAN

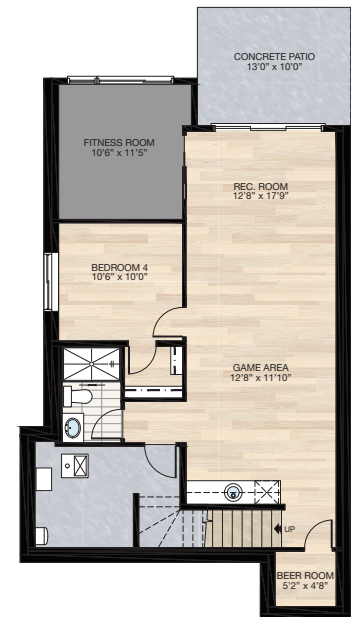
THE
RIVERSIDE
3286 SQ.FT.



MAIN
1085 SQ.FT.



UPPER
1355 SQ.FT.



BASEMENT
846 SQ.FT.

UPGRADES & OPTIONS INCLUDED IN THIS HOME:

- Large walk-out lot backing onto Fish Creek Park, neighbouring the Bow River
- Two-storey, four-bedroom home with developed basement
- Botanical, nature-inspired décor with mix of mid-century & transitional design
- Open-concept main floor featuring L-shaped kitchen that flows through to the great room & dining nook
- Spacious great room featuring central fireplace with nature-inspired wall-papered surround and unique slat detail
- Fully glassed-in main floor home office with stunning glass barn doors
- Mudroom with built-in lockers & convenient dog shower
- Upper floor features an owner's suite separated from secondary bedrooms by central bonus room, featuring luxurious 5-piece ensuite with free-standing tub, large walk-in shower with quartz bench, dual sinks & spacious walk-in closet
- Study area outside secondary bedrooms with unique floor-to-ceiling slat detail
- Fully developed walk-out basement with fourth bedroom, full bathroom, fitness room, theatre room, games area, built-in keg bar & beer room
- Large rear-facing 13' x 10' wood deck on main floor & 13' x 10' covered concrete patio on lower level
- Fully landscaped front & back yards



Renderings are artist's conceptions only and may vary by community and lot selection. Prices, floorplans, specifications and dimensions are approximate and are subject to change without notice. E.&O.E. © All rights reserved, including the right of reproduction in the whole or in part without the permission of Trico Homes.

Plan updated as of Nov 7, 2023.

