



WEST/83
TOWNHOMES
WEST SPRINGS

Oakwood

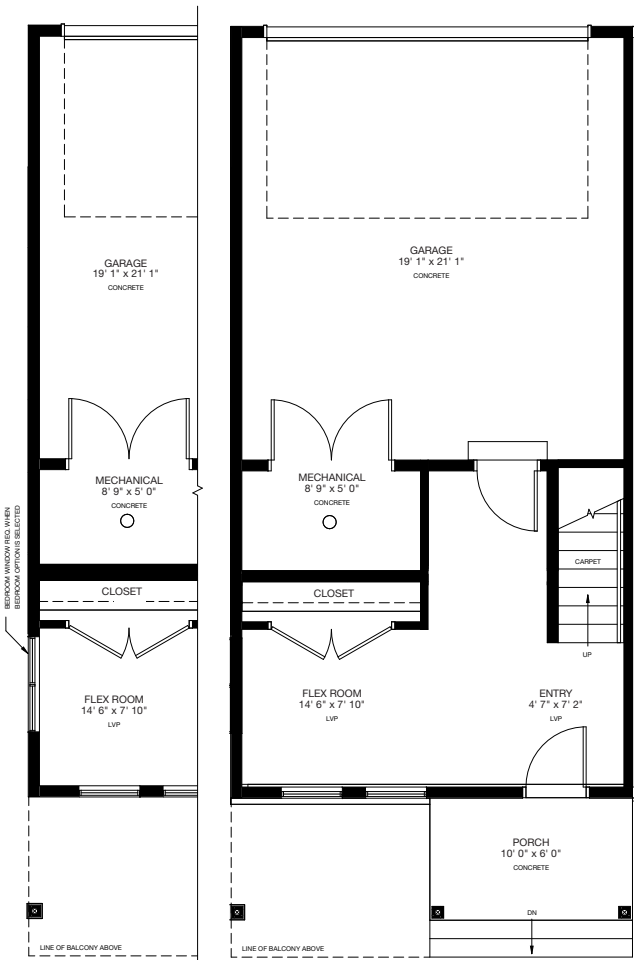
1823
SQ.FT.

3 Bedrooms

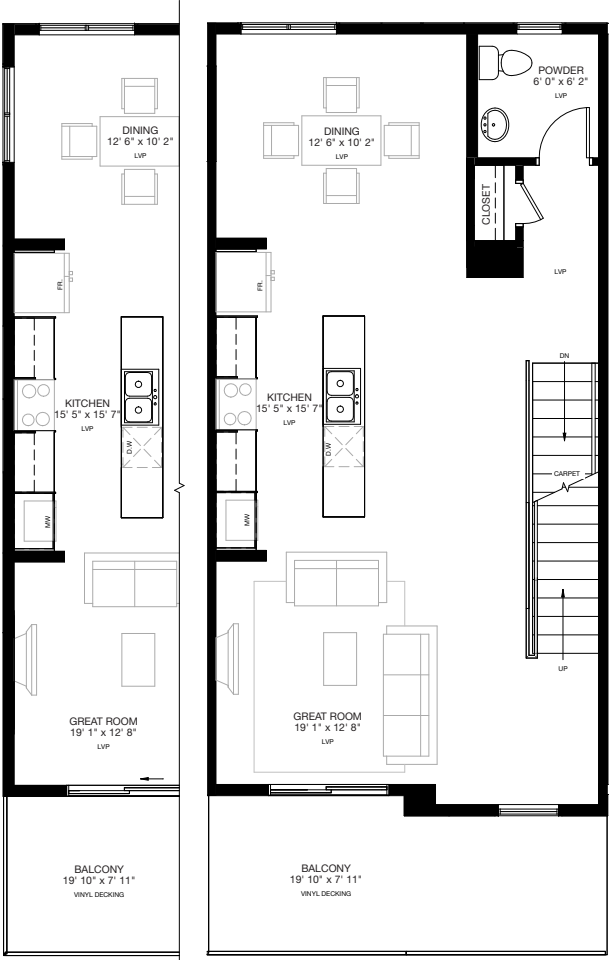
2½ Bathrooms

Double Garage

TYPE 3 • 20' UNIT
PHASE 2



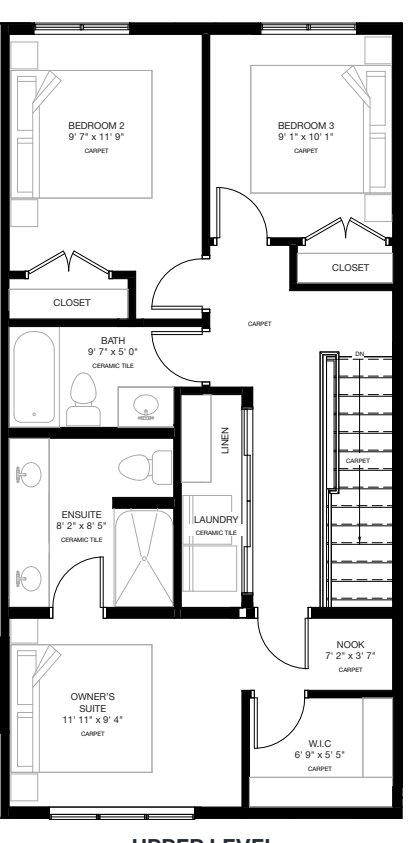
END UNIT
ENTRY LEVEL
Area: 303 Sq.Ft.



END UNIT
MAIN LEVEL
Area: 778 Sq.Ft.



END UNIT



UPPER LEVEL
Area: 742 Sq.Ft.

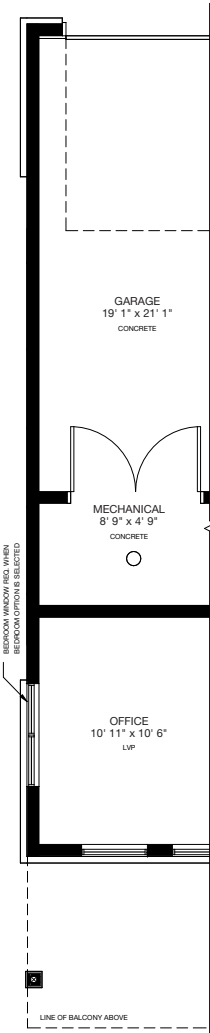
* Floorplan is an artist rendering only and may be subject to change without notice. Builder reserves the right to make modifications and changes to building design, specifications, features and floorplans without notice. Measurements and areas shown are based on pre-construction estimates and are approximate only. E.&O.E. Windows locations and sizes on these renderings are dependent on building location and elevation as approved by the City of Calgary, confirm with your sales representative exact locations. WEST83-27013 Phase 2 Floor Plans v1 (May 1, 2025)



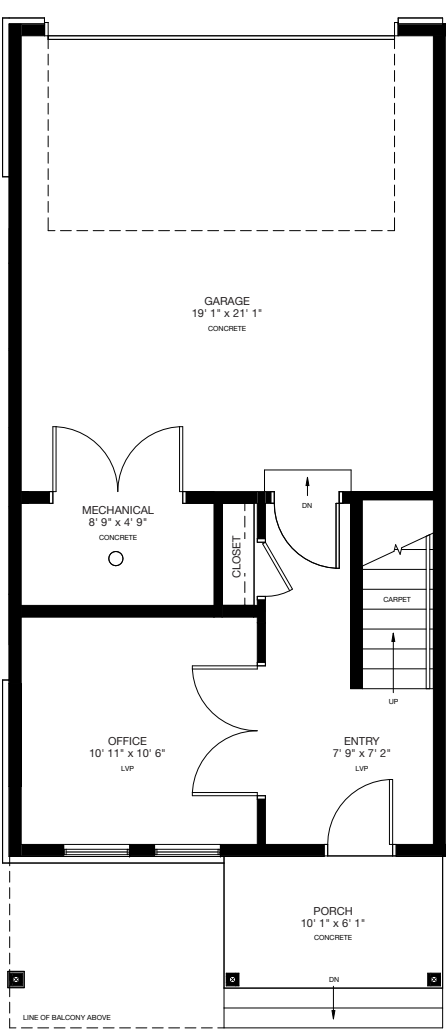
WEST/83
TOWNHOMES
WEST SPRINGS

Available
**Oakwood
Options**

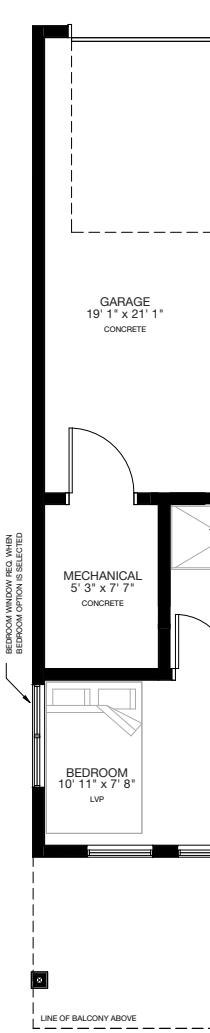
TYPE 3 • 20' UNIT
PHASE 2



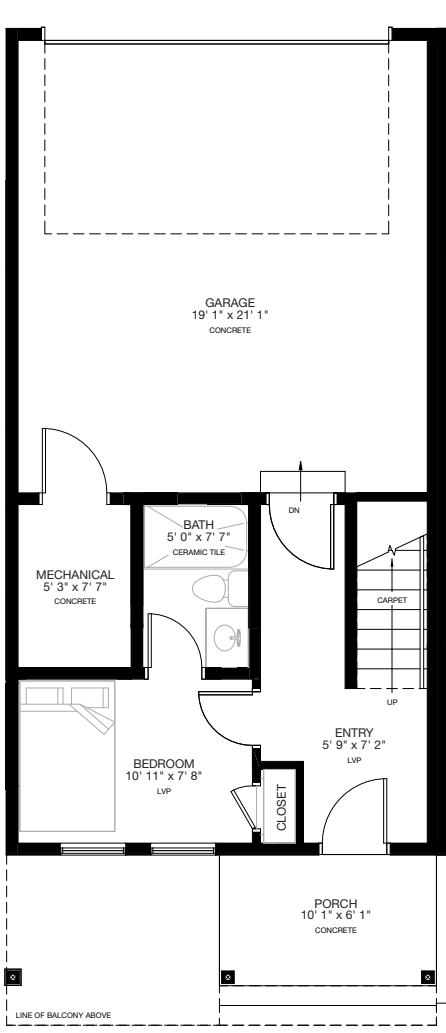
END UNIT



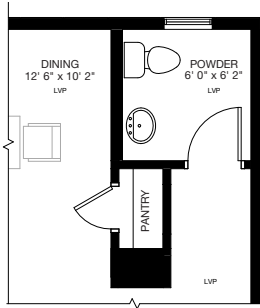
ENTRY LEVEL • OPTION 1
Area: 305 Sq.Ft.
Total Area: 1825 Sq.Ft.



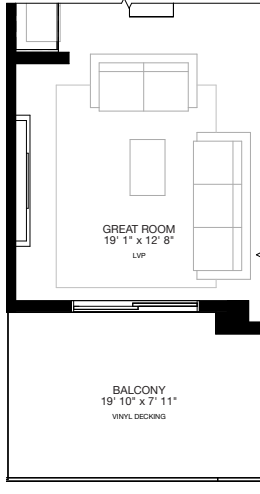
END UNIT



ENTRY LEVEL • OPTION 2
Area: 307 Sq.Ft.
Total Area: 1827 Sq.Ft.



MAIN LEVEL •
PANTRY OPTION



MAIN LEVEL •
FIREPLACE OPTION

* Floorplan is an artist rendering only and may be subject to change without notice. Builder reserves the right to make modifications and changes to building design, specifications, features and floorplans without notice. Measurements and areas shown are based on pre-construction estimates and are approximate only. E.&O.E. Windows locations and sizes on these renderings are dependent on building location and elevation as approved by the City of Calgary, confirm with your sales representative exact locations. WEST83-27013 Phase 2 Floor Plans v1 (May 1, 2025)

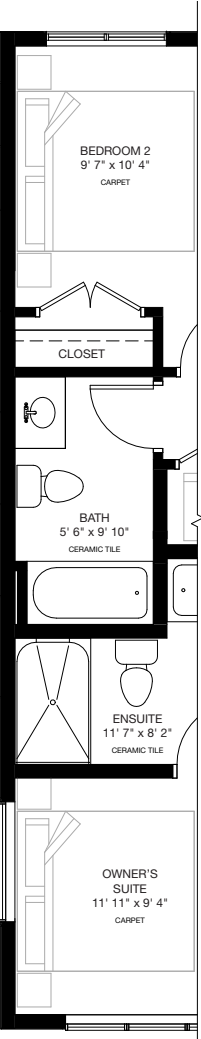




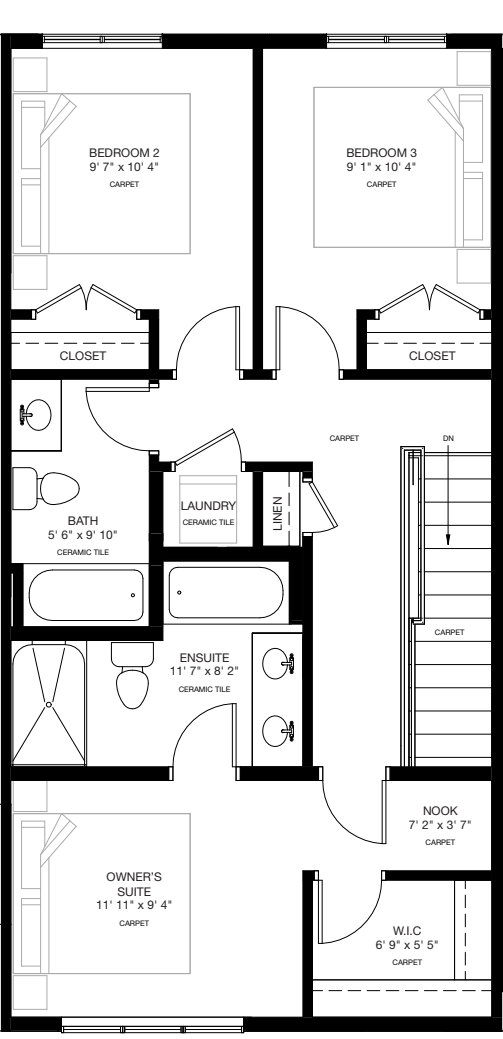
WEST/83
TOWNHOMES
WEST SPRINGS

Available
Oakwood
Options

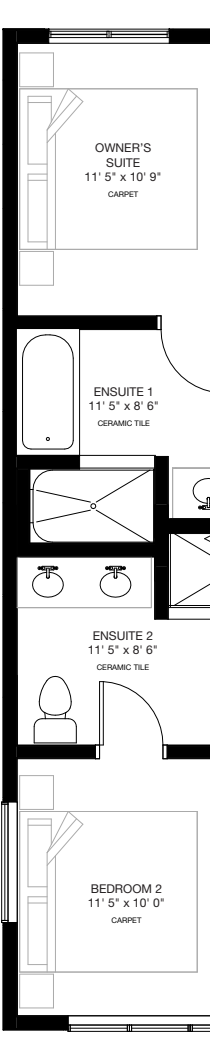
TYPE 3 • 20' UNIT
PHASE 2



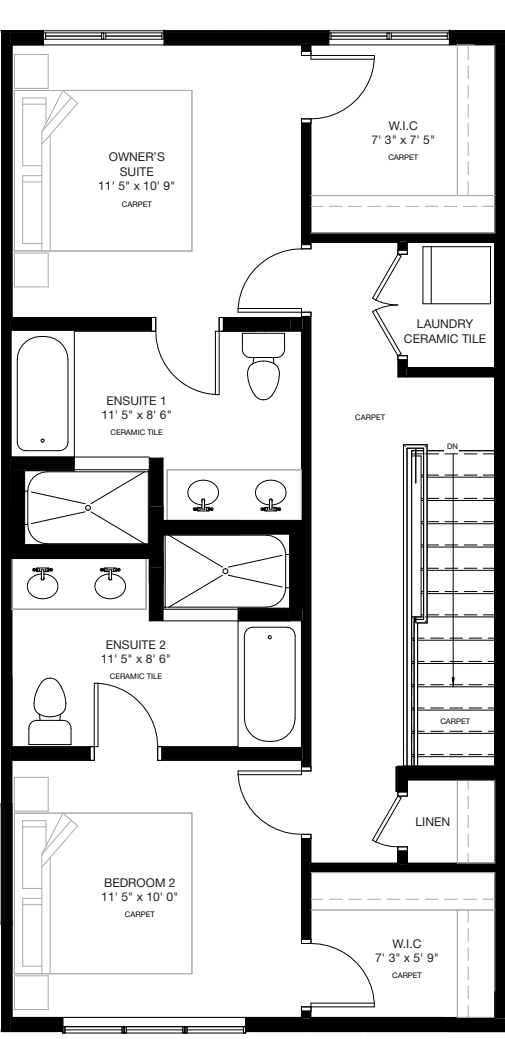
END UNIT



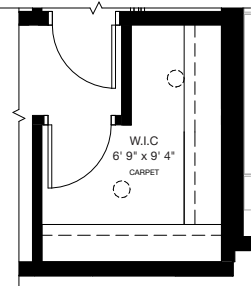
UPPER LEVEL • OPTION 1
Area: 742 Sq.Ft.
Total Area: 1823 Sq.Ft.



END UNIT



UPPER LEVEL • OPTION 2
Area: 742 Sq.Ft.
Total Area: 1823 Sq.Ft.



UPPER LEVEL •
OPTION 1
WALK-IN CLOSET
OPTION

* Floorplan is an artist rendering only and may be subject to change without notice. Builder reserves the right to make modifications and changes to building design, specifications, features and floorplans without notice. Measurements and areas shown are based on pre-construction estimates and are approximate only. E.&O.E. Windows locations and sizes on these renderings are dependent on building location and elevation as approved by the City of Calgary, confirm with your sales representative exact locations. WEST83-27013 Phase 2 Floor Plans v1 (May 1, 2025)

