



OCTOBER 2025 POSSESSION



THE BRAVO ZLL 1600 SQ.FT.

83 Wolf Hollow Rise SE



3 Bedrooms



2½ Bathrooms

OPTIONS INCLUDED IN THIS HOME ARE:

- South-facing homesite
- Second separate entry
- Close to parks & Bow River pathways
- Open concept main floor
- 9' Knock-down ceilings on main floor
- Quartz countertops in kitchen
- Pull-out kitchen faucet with spray
- 10' Kitchen island
- Hardwood, tile & carpet throughout
- 4-Piece owner's ensuite
- Front veranda
- 9' Foundation

COME VISIT OUR SHOWHOMES

110 & 114 Wolf Creek Rise SE, Calgary, AB

Call Desirae Gersheid today at 403.457.0856 or email at wolfwillowlaned@tricohomes.com



THE ROWAN II



THE SIENNA

SHOWHOME HOURS:

Mon - Thurs: 2pm - 8pm

Fri: Closed

Sat - Sun: 12pm - 5pm

**PLUS RECEIVE YOUR OWN
TRICO RED CARD**



**& ENJOY INCREDIBLE
ONGOING SAVINGS &
REWARDS FROM OUR
PARTNERS & RETAILERS**



WOLF WILLOW

**Trico
Homes™**
The Heart of Homebuilding®



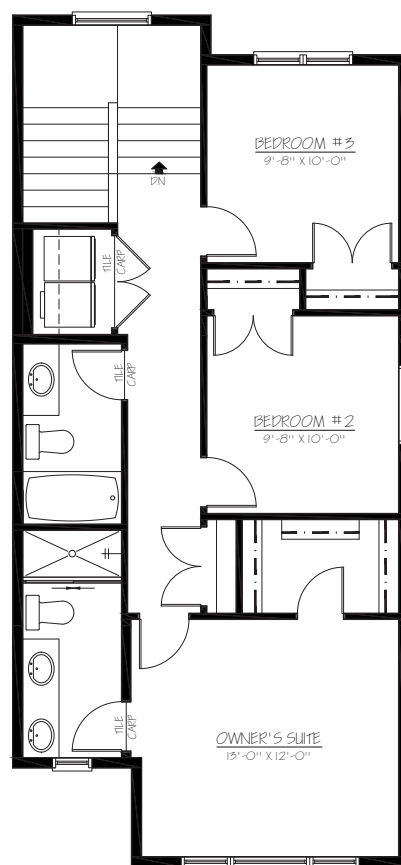
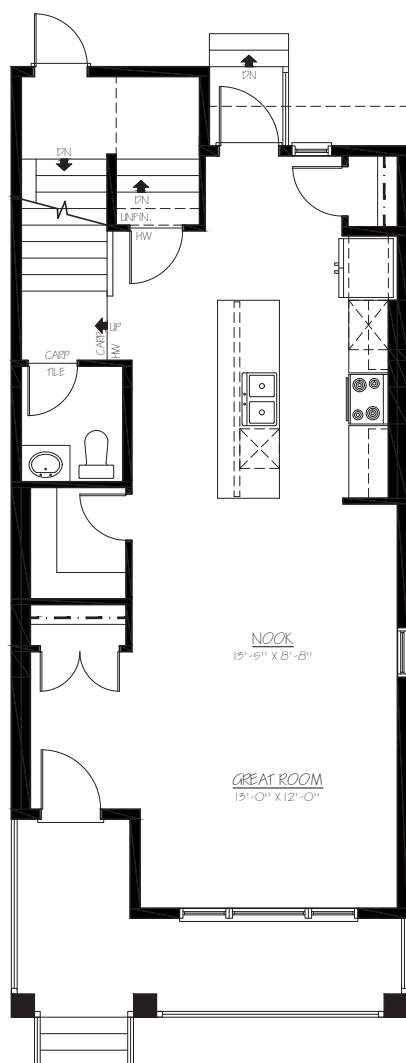
tricohomes.com



THE BRAVO ZLL

1600 SQ.FT.

83 Wolf Hollow Rise SE



Platinum member
2004 - 2024



Renderings are artist's conceptions only and may vary by community and lot selection. Prices, floorplans, specifications and dimensions are approximate and are subject to change without notice. E.&O.E. © All rights reserved, including the right if reproduction in the whole or in part without the permission of Trico Homes.

Plan updated July 4, 2025



tricohomes.com