





  
← 24' →  
Min. Lot Width

 3 Bedrooms

 2½ Bathrooms

THE  
**JAMIESON** DUPLEX  
1672 SQ.FT.

Elements Specification

Elite Specification

---

---

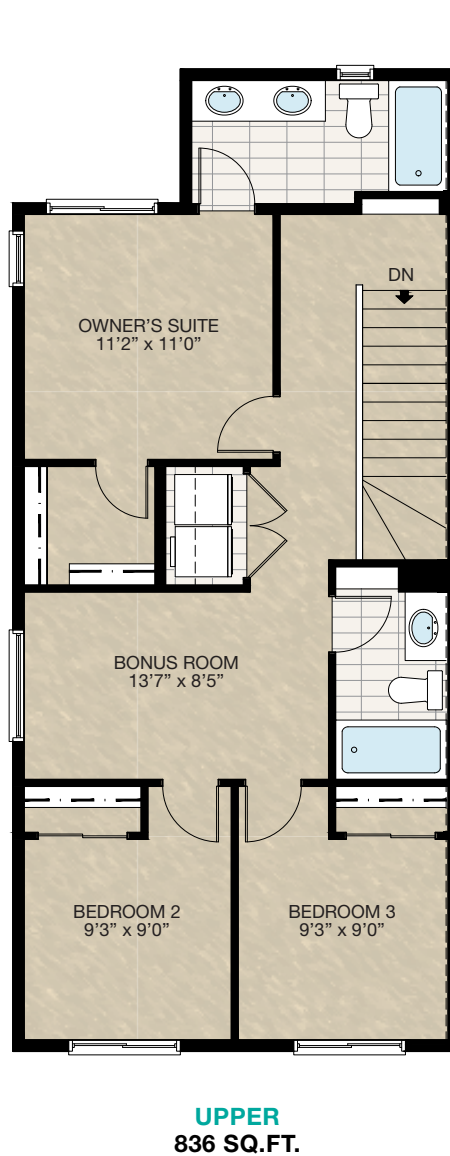
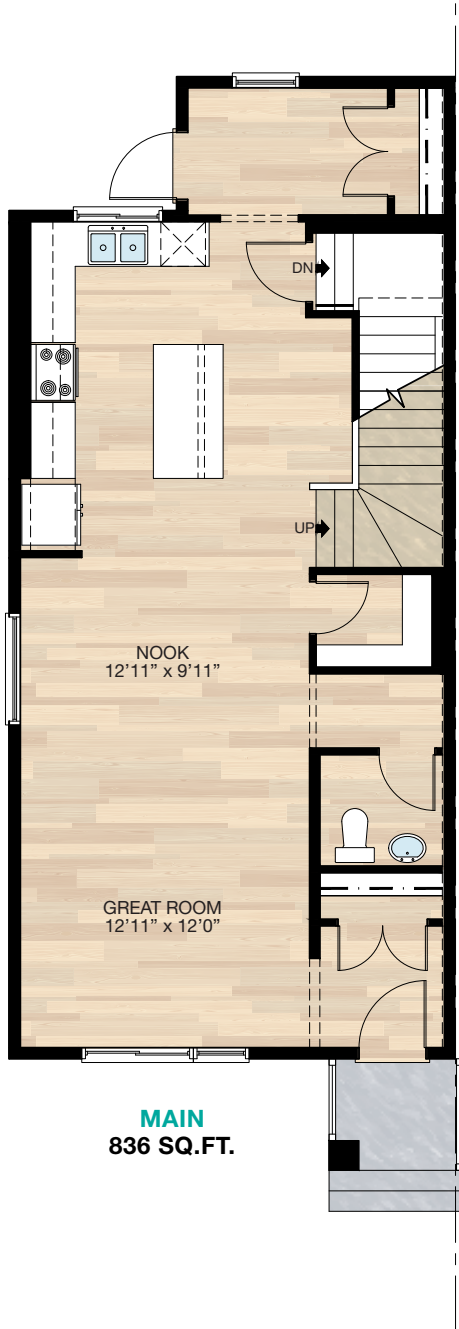
---



Trico Homes™  
The Heart of Homebuilding®

# STANDARD PLAN

THE  
JAMIESON  
DUPLEX  
1672 SQ.FT.

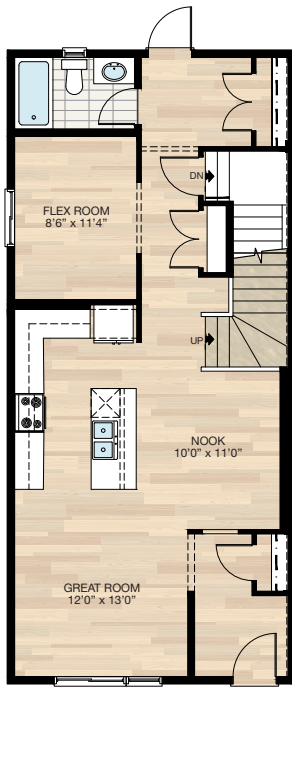


# FEATURED OPTIONS



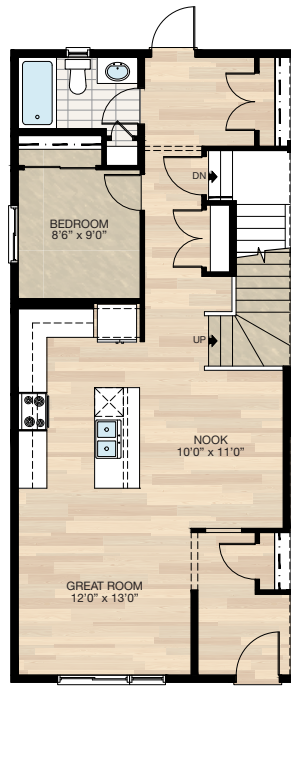
## SELECT-1 MAIN FLOOR FLEX ROOM WITH BATH OPTION

- Additional 45 sq.ft. to main floor
- Redesigned main floor to accommodate flex room & full bath
- Delete rear window 36" x 72" P
- Delete 60" x 24" P window on the side
- Relocate rear window 48" x 48" HSL to flex room
- Add 20" x 40" P window to bathroom



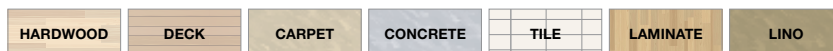
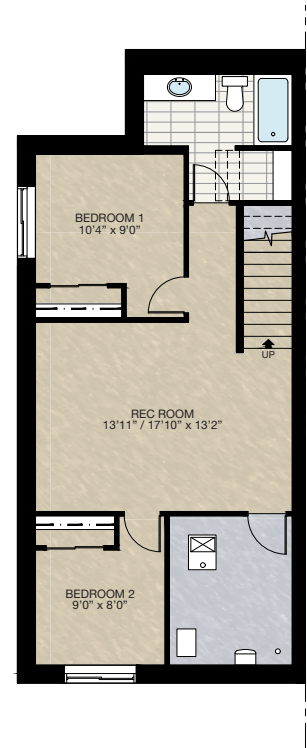
## SELECT-2 MAIN FLOOR BEDROOM WITH BATH OPTION

- Additional 45 sq.ft. to main floor
- Redesigned main floor to accommodate bedroom & full bath
- Delete rear window 36" x 72" P
- Delete 60" x 24" P window on the side
- Relocate rear window 48" x 48" HSL to bedroom
- Add 20" x 40" P window to bathroom



## SELECT-3 BASEMENT DEVELOPMENT OPTION

- 626 Sq.Ft. basement development
  - Included finished basement stairwell
  - Add 1 riser to stairwell for 9'0" basement ceiling (8'9" headroom clearance)
  - Add 60" x 36" HSL window to bedroom 2
  - Upgrade side window from 60" x 24" DBSL to 60" x 36" DBSL
- \* MUST be combined with standard main floor plan



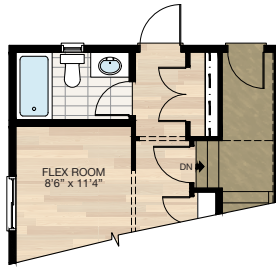
# FEATURED JAMIESON OPTIONS



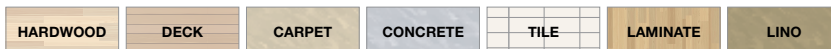
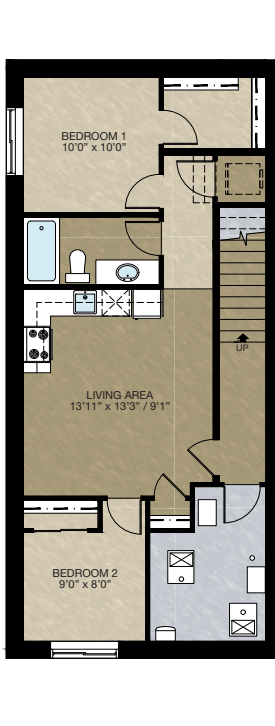
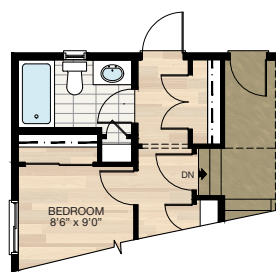
## □ SECONDARY SUITE OPTION 2

- 673 Sq.Ft. basement development
  - Included finished basement stairwell
  - Add 1 riser to stairwell for 9'0" basement ceiling (8'9" headroom clearance)
  - Add 60" x 36" HSL window to bedroom 2
  - Upgrade side window from 60" x 24" DBSL to 60" x 36" DBSL
  - Include washer & dryer rough-in only
  - Second furnace & HRV added to accommodate secondary suite
  - Include rear entrance to basement suite with switch & exterior light
- \* MUST be combined with **SELECT-1** or **SELECT-2** main floor option

## SELECT-1 MAIN FLOOR REVISION FOR SECONDARY SUITE OPTION 2



## SELECT-2 MAIN FLOOR REVISION FOR SECONDARY SUITE OPTION 2

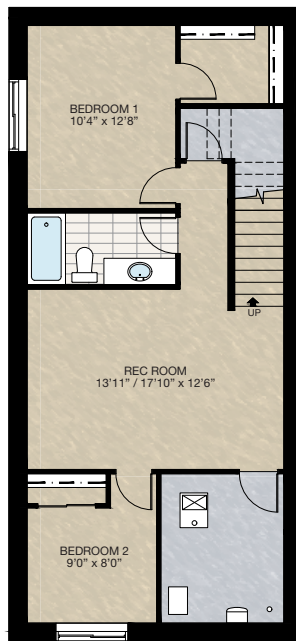


# FEATURED OPTIONS

THE  
**JAMIESON  
DUPLEX**  
1672 SQ.FT.

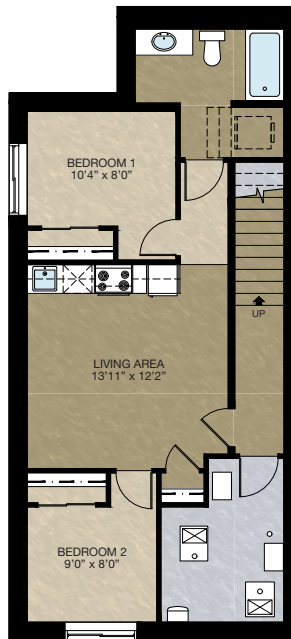
## SELECT-4 BASEMENT DEVELOPMENT OPTION

- 642 Sq.Ft. basement development
- Included finished basement stairwell
- Add 1 riser to stairwell for 9'0" basement ceiling (8'9" headroom clearance)
- Add 60" x 36" HSL window to bedroom 2
- Upgrade side window from 60" x 24" DBSL to 60" x 36" DBSL
- \* MUST be combined with **SELECT-1** or **SELECT-2** main floor option

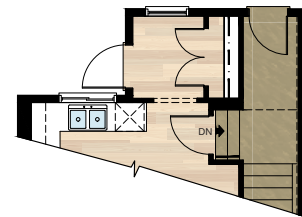


## SECONDARY SUITE OPTION 1

- 628 Sq.Ft. basement development
- Included finished basement stairwell
- Add 1 riser to stairwell for 9'0" basement ceiling (8'9" headroom clearance)
- Add 60" x 36" HSL window to bedroom 2
- Upgrade side window from 60" x 24" DBSL to 60" x 36" DBSL
- Include washer & dryer rough-in only
- Second furnace & HRV added to accommodate secondary suite
- Include rear entrance to basement suite
- \* MUST be combined with standard main floor only



## MAIN FLOOR REVISION FOR SECONDARY SUITE OPTION 1



Trico Homes is a local home builder, with new single and multi-family homes for sale in Calgary, Okotoks, Chestermere, Cochrane, Airdrie and DeWinton. Offering a great selection of starter, move-up, semi-estate and ultra-estate models in numerous communities, you'll find the house that's just right for you! Look for this model and many others in Ambleton, Belmont, Carrington, Chelsea, Chelsea Court Townhomes, Colours of Seton Townhomes, Cornerbrook, Creekview, D'Arcy, Glacier Ridge, Hamilton Heights, Homestead, Harmony, Legacy, Midtown, Pine Creek, Precedence, Rivercrest, Seton, Sirocco, Verona North Townhomes, West83 Townhomes, West Springs and Wolf Willow.



Renderings are artist's conceptions only and may vary by community and lot selection. Prices, floorplans, specifications and dimensions are approximate and are subject to change without notice. E.&O.E. © All rights reserved, including the right if reproduction in the whole or in part without the permission of Trico Homes.

Plan updated as of January 10, 2024.



tricohomes.com