

# colours of seton

TOWNHOMES

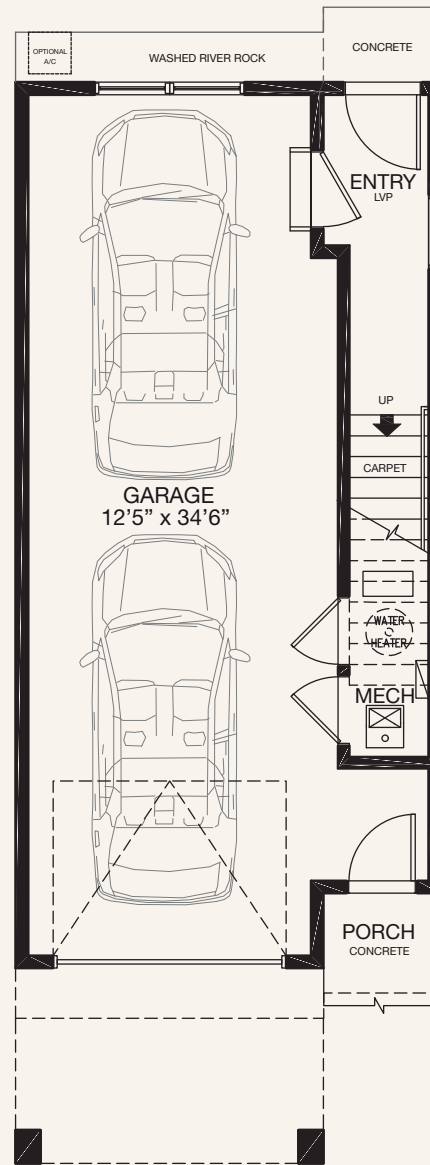
## Coral

Type D3 | 1376 Sq.Ft | 17' wide

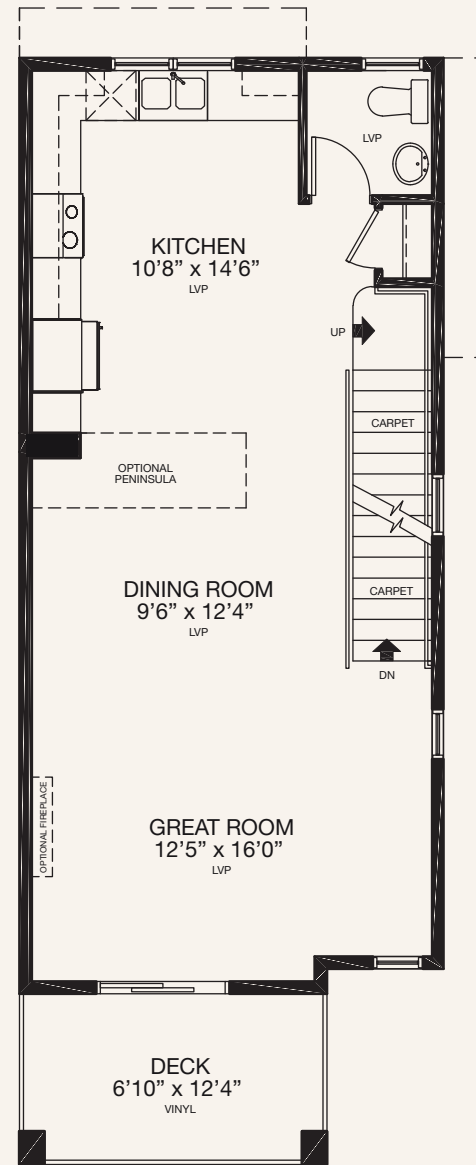
3 Bedrooms

2.5 Baths

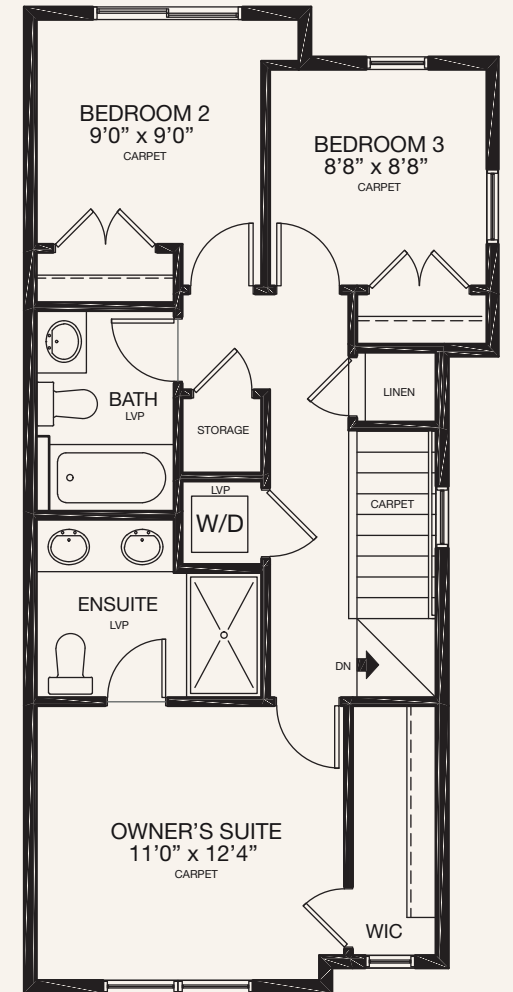
Tandem Garage



**ENTRY LEVEL**  
63 SQ.FT.



**MAIN LEVEL**  
633 SQ.FT.



**UPPER LEVEL**  
680 SQ.FT.

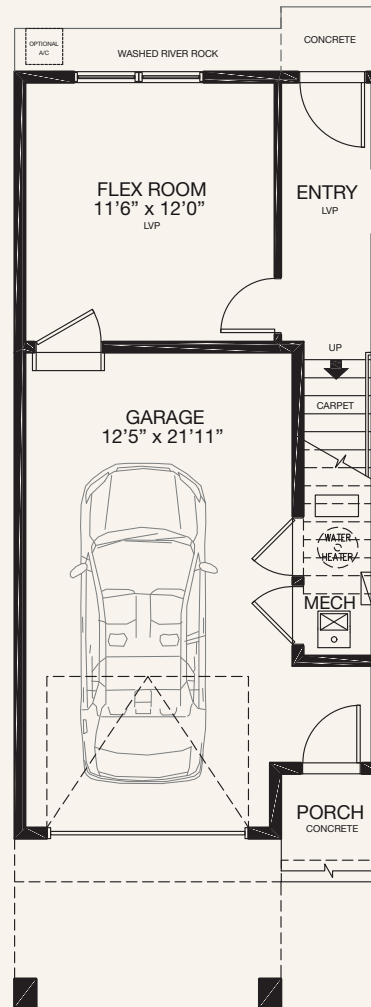
\* Floorplan is an artist rendering only and may be subject to change without notice. Builder reserves the right to make modifications and changes to building design, specifications, features and floorplans without notice. Measurements and areas shown are based on pre-construction estimates and are approximate only. E.&O.E. Windows locations and sizes on these renderings are dependent on building location and elevation as approved by the City of Calgary, confirm with your sales representative exact locations.

# colours of seton

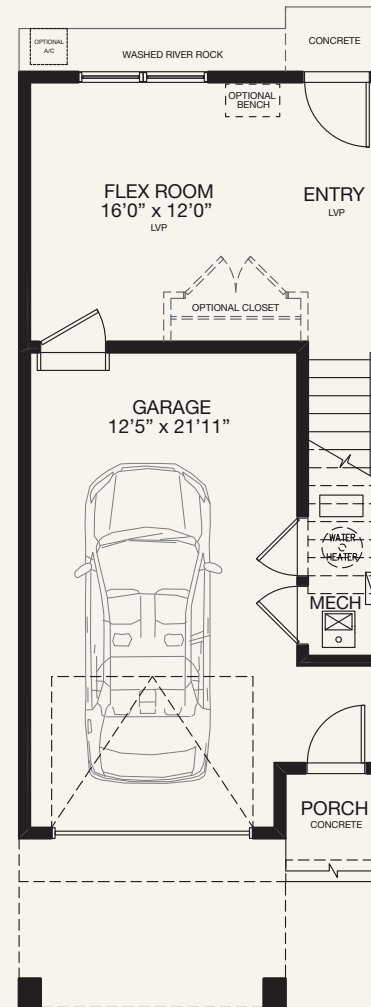
TOWNHOMES

## Coral

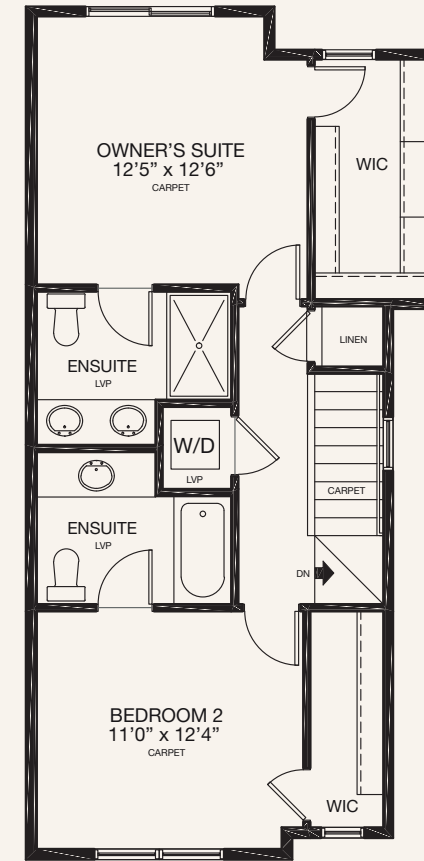
### AVAILABLE OPTIONS



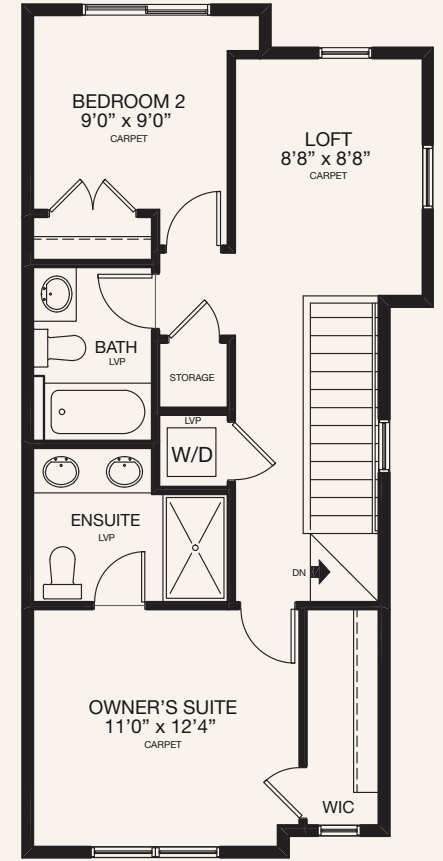
**ENTRY LEVEL  
FLEX ROOM OPTION 1**  
223 SQ.FT.



**ENTRY LEVEL  
FLEX ROOM OPTION 2**  
223 SQ.FT.



**UPPER LEVEL  
DUAL BEDROOM OPTION**  
680 SQ.FT.



**UPPER LEVEL  
LOFT OPTION**  
680 SQ.FT.

\* Floorplan is an artist rendering only and may be subject to change without notice. Builder reserves the right to make modifications and changes to building design, specifications, features and floorplans without notice. Measurements and areas shown are based on pre-construction estimates and are approximate only. E.&O.E. Windows locations and sizes on these renderings are dependent on building location and elevation as approved by the City of Calgary, confirm with your sales representative exact locations.