

EXCLUSIVE & RARE
ONLY
18
DE WINTON, ALBERTA

 HAMILTON
HEIGHTS



The Birmingham

3030 SQ.FT.

3 BEDROOMS | 2.5 BATHS | 3 CAR GARAGE

A Signature Home Collection exclusively by



Main Floor

1444 Sq.Ft.


THE
BIRMINGHAM
3030 SQ.FT.




HARDWOOD	DECK	CARPET	CONCRETE	TILE	LVP
----------	------	--------	----------	------	-----

Upper Floor

1586 Sq.Ft.

 3 Bedrooms

 2½ Bathrooms

 3 Car Garage



Featured Options

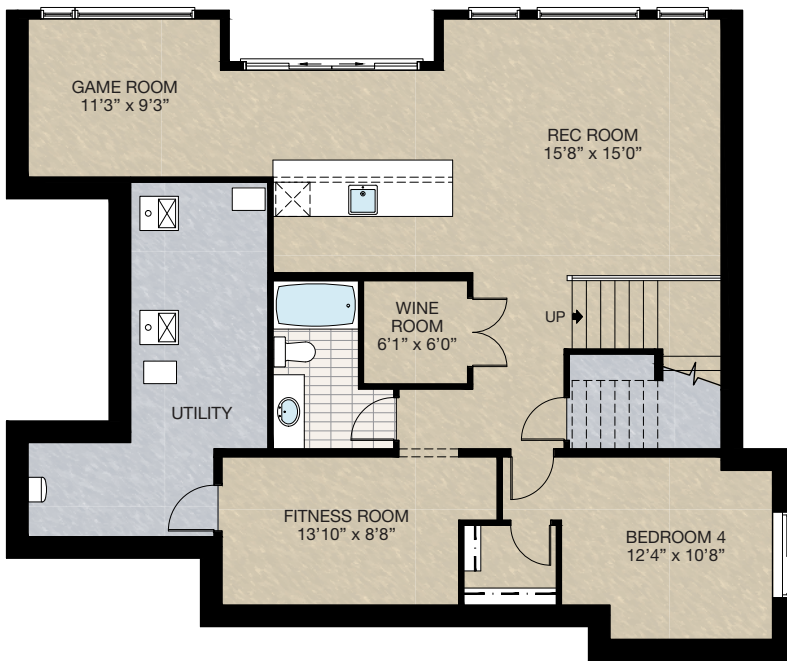
THE
BIRMINGHAM
3030 SQ.FT.

SELECT-5
BASEMENT DEVELOPMENT OPTION

- 1054 sq.ft. developed area
- Add 1 riser to stairwell for 9'0" basement ceiling (8'9" Headroom clearance)

SELECT-6
LAUNDRY ROOM OPTION

- Add laminate counter with gables over washer & dryer with wash control knobs
- Add upper cabinet above washer & dryer with hanging rod
- Add 2'-4.5" lower cabinet with sink

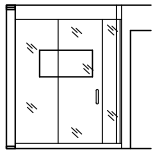
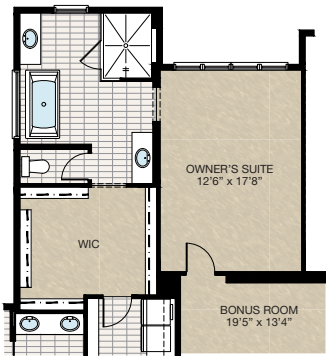


Featured Options

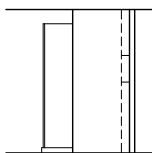
THE
BIRMINGHAM
3030 SQ.FT.

SELECT-1 ENSUITE OPTION

- Add 2' cantilever adding 26 sq.ft.
- Re-design owner's suite & walk-in closet



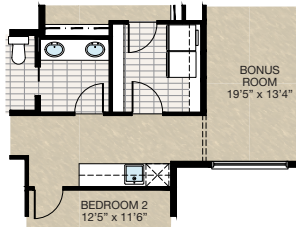
Front Elevation View



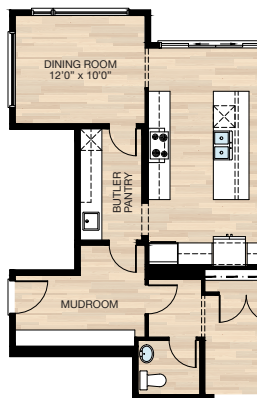
Side Elevation View

SELECT-2 UPPER FLOOR WET BAR OPTION

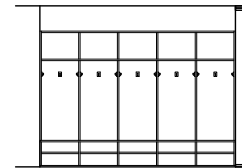
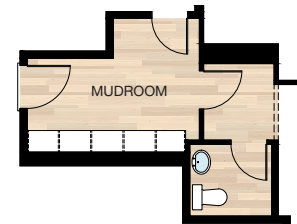
- Add upper & lower cabinets
- Add bar fridge & sink



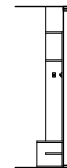
SELECT-4 BUTLER PANTRY OPTION



SELECT-3 MUDROOM MDF LOCKERS OPTION



Front Elevation View



Side Elevation View

Trico Homes is a local home builder, with new single and multi-family homes for sale in Calgary, DeWinton, Okotoks, Chestermere, Cochrane, and Airdrie. Offering a great selection of starter, move-up, semi-estate and estate models in numerous communities, you'll find the house that's just right for you! Look for this model and many others in Ambleton, Arbour Lake, Belmont, Carrington, Chelsea, CoachRidge, Cornerbrook, D'Arcy, Dawson's Landing, Hamilton Heights, Heritage Hills, Homestead, Legacy, Midtown, PineCreek, Precedence, Rivercrest, Seton, Sirocco, Verona West Townhomes, West83 Townhomes and Wolf Willow.

Renderings are artist's conceptions only and may vary by community and lot selection. Prices, floorplans, specifications and dimensions are approximate and are subject to change without notice. E.&O.E. © All rights reserved, including the right if reproduction in the whole or in part without the permission of Trico Homes. Revision: Sept 8, 2023.



Learn more at trichomes.com

