



**WEST/83**  
TOWNHOMES  
WEST SPRINGS



**Granville**

1381  
SQ.FT.

2 Bedrooms

2½ Bathrooms

Tandem Garage

**TYPE 2 • 17' UNIT**

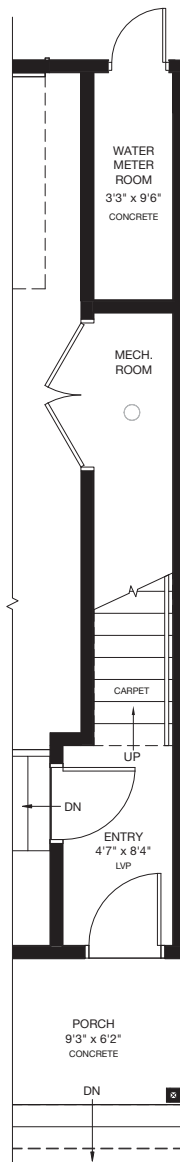


\* Floorplan is an artist rendering only and may be subject to change without notice. Builder reserves the right to make modifications and changes to building design, specifications, features and floorplans without notice. Measurements and areas shown are based on pre-construction estimates and are approximate only. E.&O.E. Windows locations and sizes on these renderings are dependent on building location and elevation as approved by the City of Calgary, confirm with your sales representative exact locations. WEST83-29374 Phase 2 Blacklines (Sept 9, 2024)

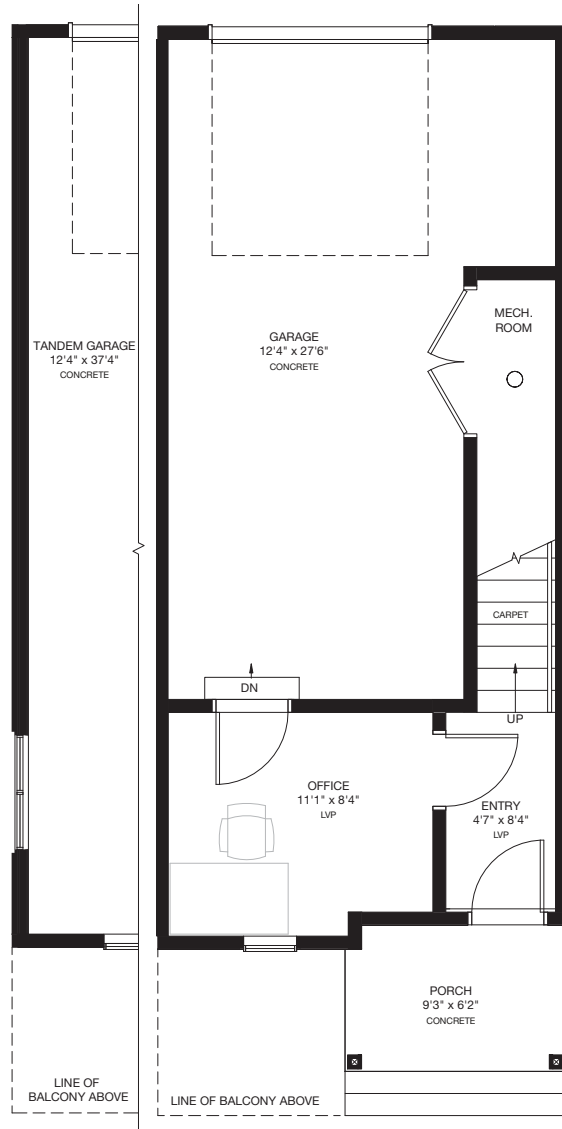


WEST/83  
TOWNHOMES  
WEST SPRINGS

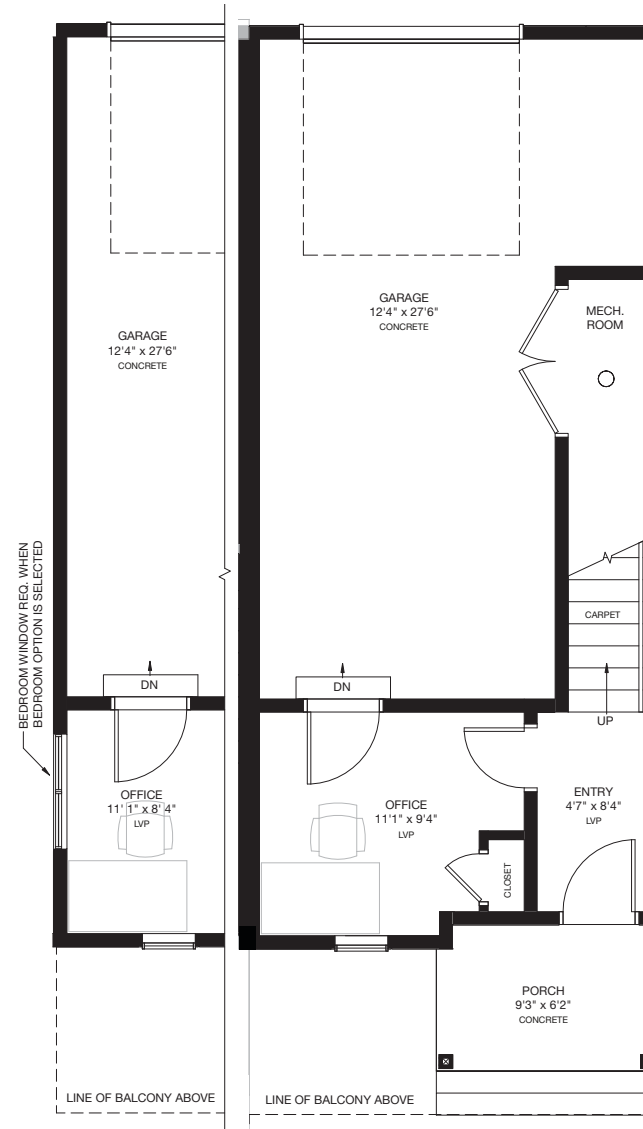
Available  
Granville  
Options  
TYPE 2 • 17' UNIT



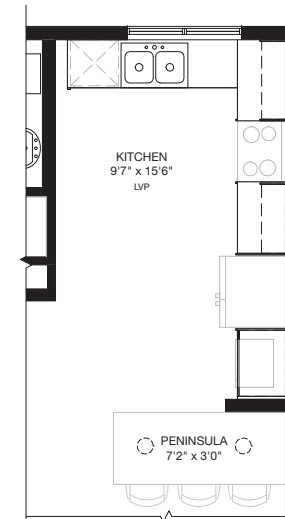
**ENTRY LEVEL • WITH WATER METER ROOM**



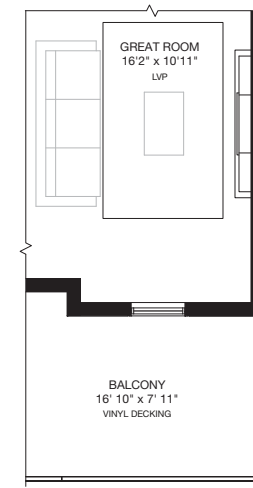
**ENTRY LEVEL • OPTION 1**  
Area: 273 Sq.Ft.  
Total Area: 1531 Sq.Ft.



**ENTRY LEVEL • OPTION 2**  
Area: 273 Sq.Ft.  
Total Area: 1531 Sq.Ft.



**MAIN LEVEL • KITCHEN PENINSULA OPTION**



**MAIN LEVEL • FIREPLACE OPTION**

\* Floorplan is an artist rendering only and may be subject to change without notice. Builder reserves the right to make modifications and changes to building design, specifications, features and floorplans without notice. Measurements and areas shown are based on pre-construction estimates and are approximate only. E.&O.E. Windows locations and sizes on these renderings are dependent on building location and elevation as approved by the City of Calgary, confirm with your sales representative exact locations. WEST83-29374 Phase 2 Blacklines (Sept 9, 2024)