






← 29' →
Min. Lot Width

 3 Bedroom

 2½ Bathrooms

 Double Garage

THE KENSINGTON ZLL

1872 SQ.FT.

Elements Specification

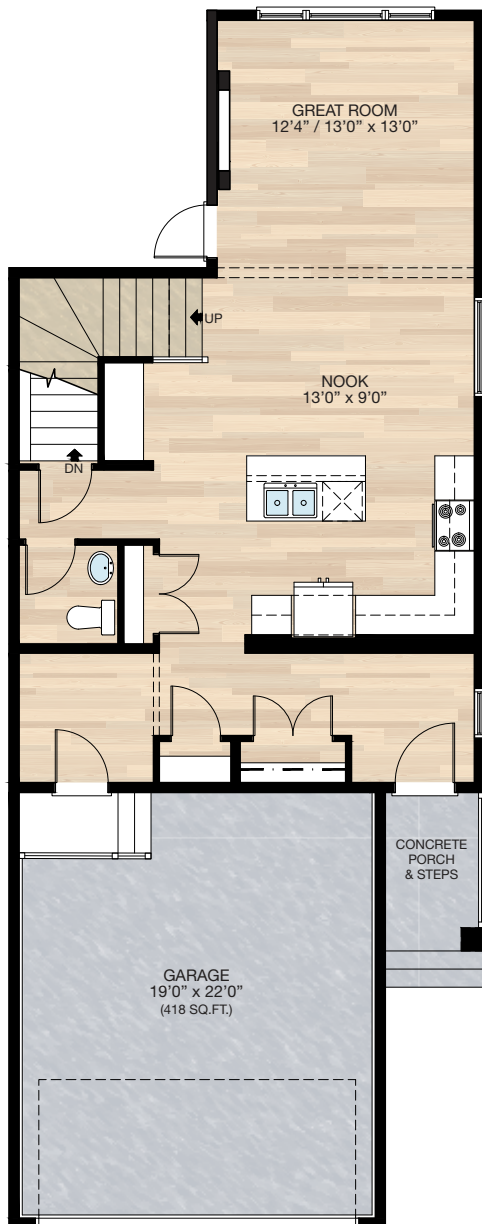
Elite Specification



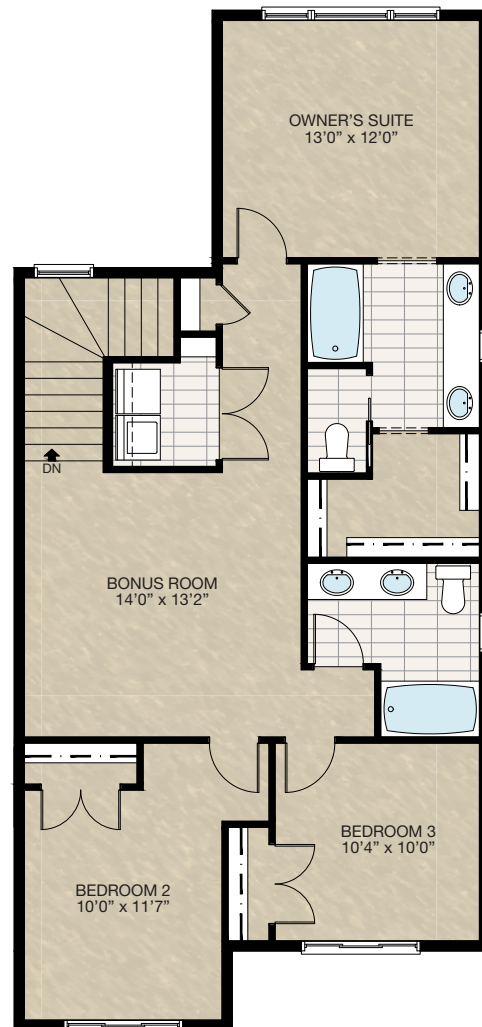
Trico Homes™
The Heart of Homebuilding®

STANDARD PLAN

THE KENSINGTON ZLL
1872 SQ.FT.



MAIN
818 SQ.FT.



UPPER
1054 SQ.FT.

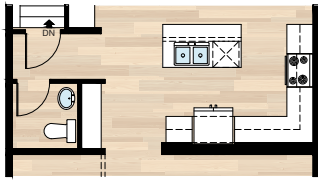


FEATURED OPTIONS



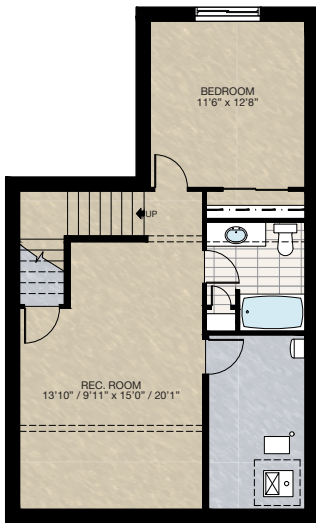
SELECT-1 CABINET PANTRY OPTION

- Delete pantry closet
- Add 60" wide & 18" deep cabinet pantry

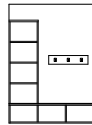


SELECT-4 BASEMENT DEVELOPMENT OPTION

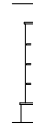
- 567 Sq.Ft. developed area
- Included finished basement stairwell
- Relocated 2'8" door top of stair to basement mechanical room
- Add 1 riser to stairwell for 9'0" basement ceiling (8'9" headroom clearance)
- Basement window upgrade from 60" x 24" to 60" x 36"



SELECT-2 MUDROOM MDF LOCKERS OPTION



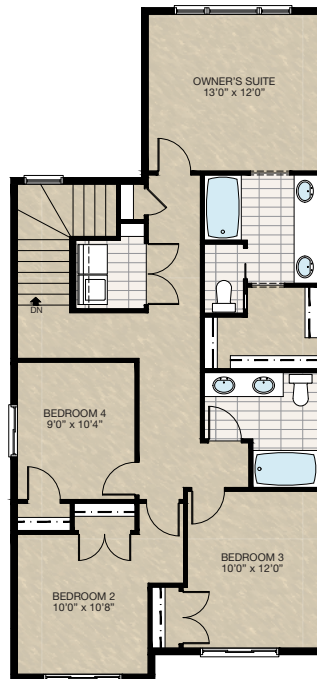
Lockers Elevation



Lockers Section

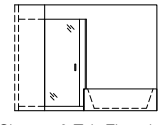
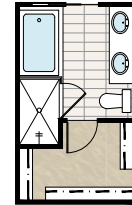
SELECT-5 FOUR BEDROOMS OPTION

- *This option MUST be short side zero
- Additional 26 sq.ft. to upper floor
- 2'0" x 13'0" extension to Bedroom 3
- Bedroom 3 cantilevered over porch
- Bonus room becomes Bedroom 4
- Delete 60" x 24" P window from Bonus Room
- Add 48" x 40" HSL window to Bedroom 4



SELECT-3 ENSUITE OPTION

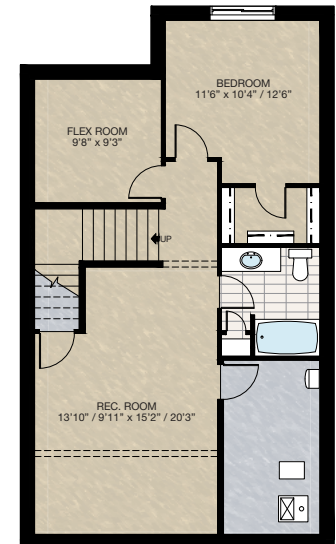
- Delete 60" x 36" tub/shower combo
- Add 40" x 60" tiled shower with 10mm glass and soaker tub with tiled deck
- Decreased closet 5.5"
- Decreased length of vanity
- Relocate bathroom window



Shower & Tub Elevation

SELECT-8 BASEMENT DEVELOPMENT OPTION

- *MUST combined with **SELECT-6 Main Floor Den Option**
- 697 Sq.Ft. developed area
- Included finished basement stairwell
- Relocated 2'8" door top of stair to basement mechanical room
- Add 1 riser to stairwell for 9'0" basement ceiling (8'9" headroom clearance)
- Basement window upgraded from 60" x 24" to 60" x 36"

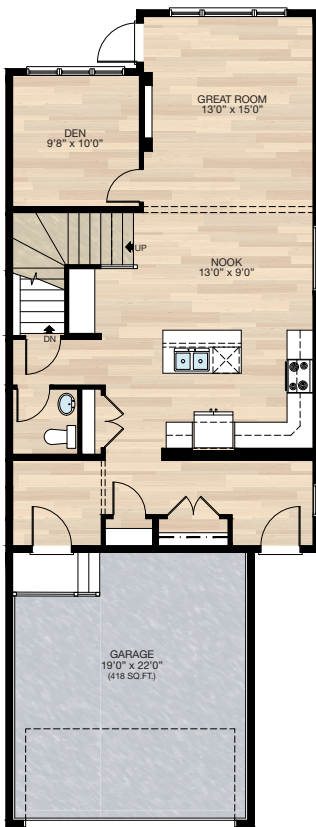


FEATURED OPTIONS

THE
KENSINGTON
ZLL
1872 SQ.FT.

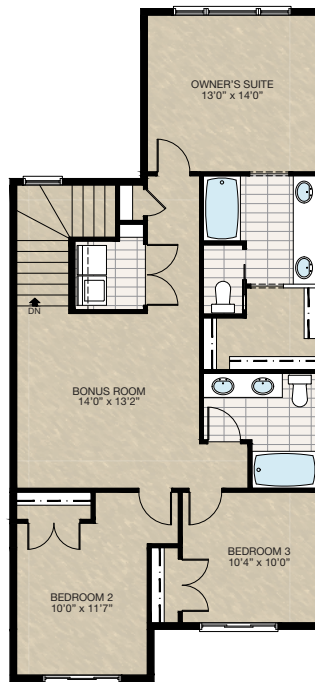
SELECT-6 MAIN FLOOR DEN OPTION

- Additional 124 sq.ft. to main floor
 - Great room 2'0" x 14'0" extension and foundation below
 - Relocate 8" wall & electric fireplace
 - Add 90" x 72" VSL/P/P window at den
- *See upper floor revision for this option



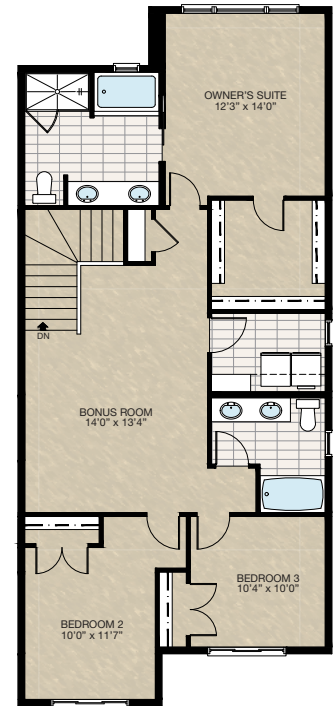
UPPER FLOOR REVISION FOR SELECT-6 MAIN FLOOR DEN OPTION

- Additional 28 sq.ft. to upper floor
- Owner's suite 2'0" x 14'0" extension
- Delete three 36" x 30" P windows at stairwell
- Add 72" x 18" P window at stairwell



SELECT-7 UPPER FLOOR OPTION

- *MUST combined with **SELECT-6 Main Floor Den Option**
- *CANNOT combined with **SELECT-3 Ensuite Option**
- Additional 133 sq.ft. to upper floor
- Relocate ensuite location
- Delete 60" x 34" one piece tub/shower
- Add 60" x 36" shower
- Add 60" x 36" soaker tub with 4" tiled deck
- Larger walk-in closet
- Relocate laundry room
- Add 24" x 48" VSL window to laundry room
- Delete 72" x 18" P window at stairwell
- 42" HT stubwall next to stairwell



Trico Homes is a local home builder, with new single and multi-family homes for sale in Calgary, Okotoks, Chestermere, Cochrane, Airdrie and DeWinton. Offering a great selection of starter, move-up, semi-estate and ultra-estate models in numerous communities, you'll find the house that's just right for you! Look for this model and many others in Ambleton, Arbour Lake, Belmont, Carrington, Chelsea, Cornerbrook, D'Arcy, Dawson's Landing, Glacier Ridge, Hamilton Heights, Homestead, Legacy, Midtown, Pine Creek, Precedence, Rivercrest, Seton, Sirocco, Verona West Townhomes, West83 Townhomes and Wolf Willow.



Renderings are artist's conceptions only and may vary by community and lot selection. Prices, floorplans, specifications and dimensions are approximate and are subject to change without notice. E.&O.E. © All rights reserved, including the right if reproduction in the whole or in part without the permission of Trico Homes.

Plan updated as of October 04, 2024.



trichomes.com