



OCTOBER POSSESSION



THE RAEYA ZLL 1802 SQ.FT.

138 Wolf Hollow Drive SE



3 Bedrooms



3 Bathrooms

OPTIONS INCLUDED IN THIS HOME ARE:

- South-facing backyard close to parks & Bow River pathways
- Main floor flex room & full bathroom
- Quartz kitchen countertops
- Gas range with chimney hoodfan
- Hardwood, tile & carpet throughout
- 9' Knock-down ceilings on main floor
- 3 Bedrooms with central bonus room on upper floor
- Full laundry room with shelving on upper floor
- 4-Piece owner's ensuite with walk-in closet
- Separate entrance at rear deck
- Front veranda & rear deck with gas line & stairs to grade
- Basement rough-ins
- 9' Foundation

COME VISIT OUR SHOWHOMES

110 & 114 Wolf Creek Rise SE, Calgary, AB

Call Desirae Gersheid today at 403.457.0856 or
email at wolfwillowlaned@tricohomes.com



THE ROWAN II



THE SIENNA

SHOWHOME HOURS:

Mon - Thurs: 2pm - 8pm

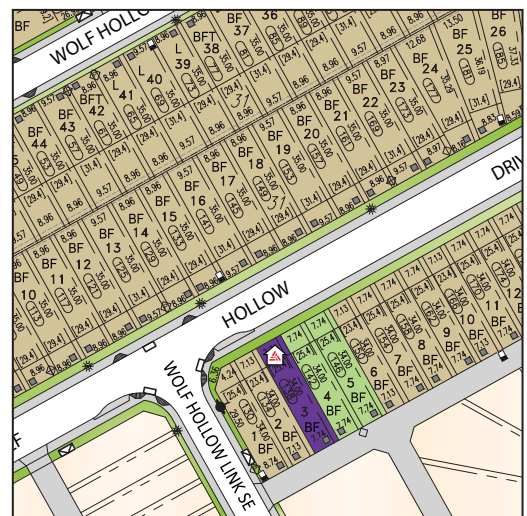
Fri: Closed

Sat - Sun: 12pm - 5pm

**PLUS RECEIVE YOUR OWN
TRICO RED CARD**



**& ENJOY INCREDIBLE
ONGOING SAVINGS &
REWARDS FROM OUR
PARTNERS & RETAILERS**



WOLF WILLOW



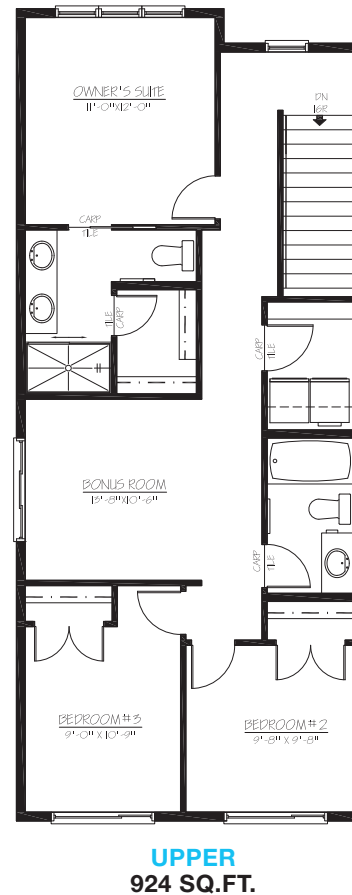
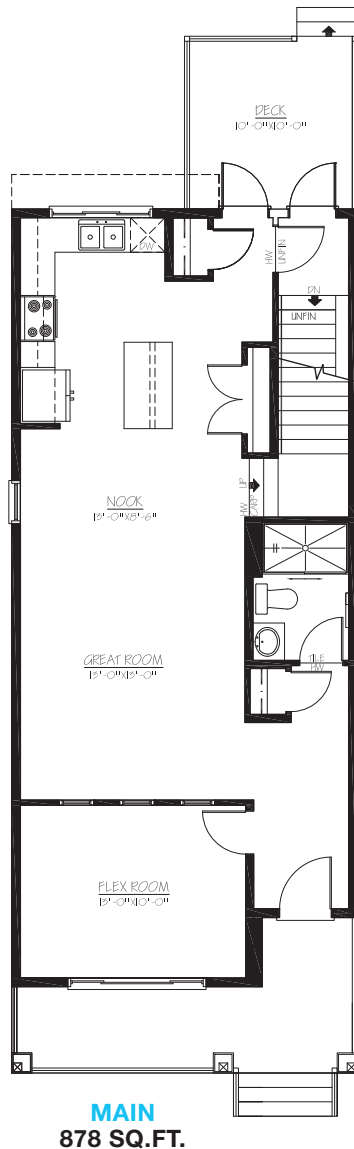
tricohomes.com



THE RAEYA ZLL

1802 SQ.FT.

138 Wolf Hollow Drive SE



Renderings are artist's conceptions only and may vary by community and lot selection. Prices, floorplans, specifications and dimensions are approximate and are subject to change without notice. E.&OE. © All rights reserved, including the right of reproduction in the whole or in part without the permission of Trico Homes.

Plan updated July 3, 2025



tricohomes.com