



SEPTEMBER POSSESSION



# THE LANCASTER

1750 SQ.FT.

148 Edith Place NW



4 Bedrooms



3 Bathrooms

### OPTIONS INCLUDED IN THIS HOME ARE:

- Walk-out homesite
- Stainless steel appliances
- Quartz countertops throughout
- 9' Knock-down ceilings on main
- Main floor bedroom & full bath
- Central bonus room & 3 bedrooms on upper floor
- 4-Piece owner's ensuite & walk-in closet
- Full laundry room with shelving
- 9' Foundation
- Basement rough-ins
- Rear deck with aluminum railing
- 20' x 21' Rear gravel parking pad

### COME VISIT OUR SHOWHOMES

80 & 84 Edith Gate NW, Calgary, AB

Call Justin Rampersad today at 403.972.0702 or email at [glacrieridgelaned@tricohomes.com](mailto:glacrieridgelaned@tricohomes.com)



### SHOWHOME HOURS:

Mon - Thurs: 2pm - 8pm

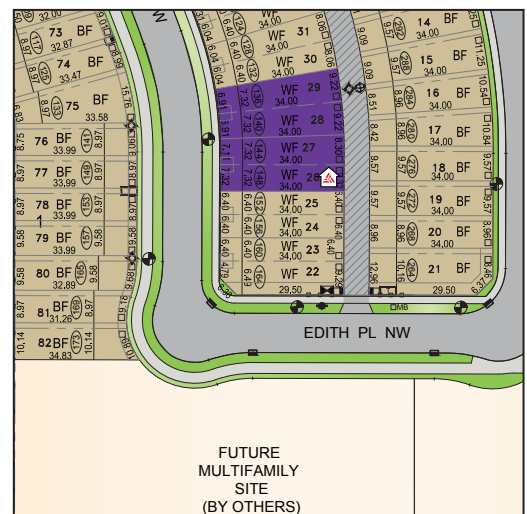
Fri: Closed

Sat - Sun: 12pm - 5pm

### PLUS RECEIVE YOUR OWN TRICO RED CARD



& ENJOY INCREDIBLE ONGOING SAVINGS & REWARDS FROM OUR PARTNERS & RETAILERS



GLACIER RIDGE

**Trico Homes**  
The Heart of Homebuilding®



[tricohomes.com](http://tricohomes.com)



# THE LANCASTER

1750 SQ.FT.

148 Edith Place NW



Renderings are artist's conceptions only and may vary by community and lot selection. Prices, floorplans, specifications and dimensions are approximate and are subject to change without notice. E.&O.E. © All rights reserved, including the right if reproduction in the whole or in part without the permission of Trico Homes.

Plan updated July 24, 2024



tricohomes.com