

← 36' →
Min. Lot Width

-  3 Bedrooms
-  2½ Bathrooms
-  Double Garage

THE STANLEY

2671 SQ.FT.

Elements Specification

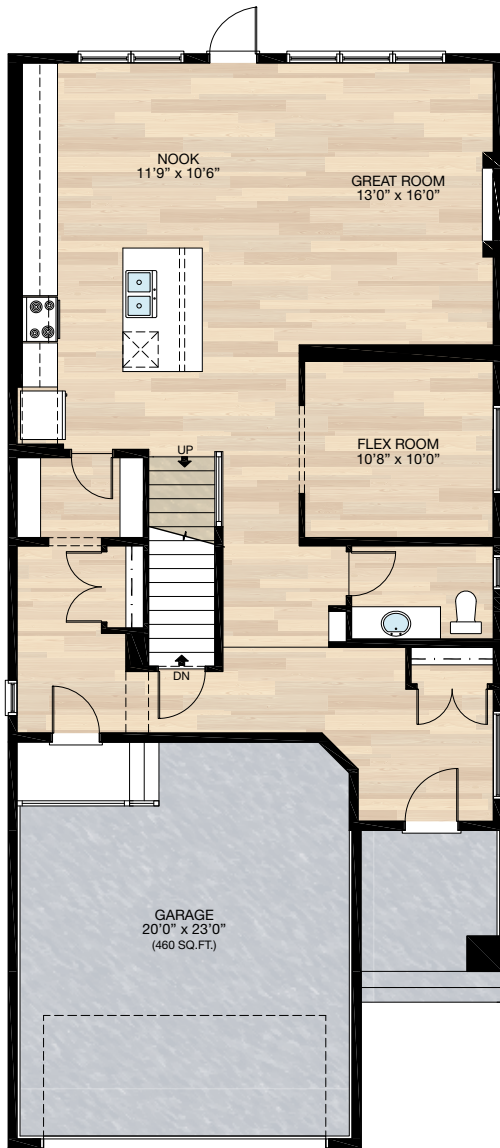
Elite Specification



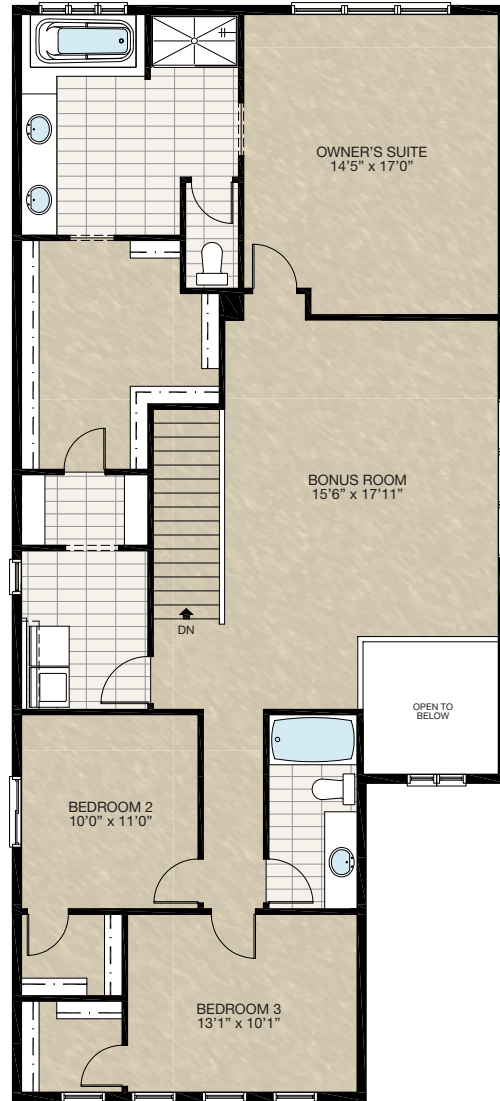
Trico Homes™
The Heart of Homebuilding®

STANDARD PLAN

THE
STANLEY
2671 SQ.FT.



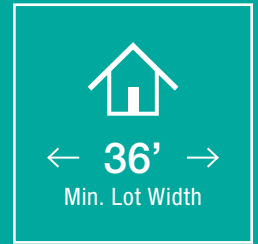
MAIN
1137 SQ.FT.



UPPER
1534 SQ.FT.

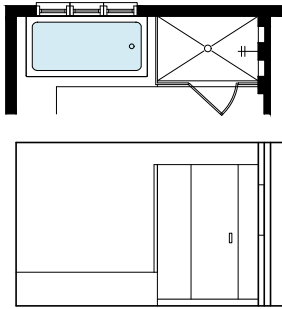


FEATURED OPTIONS

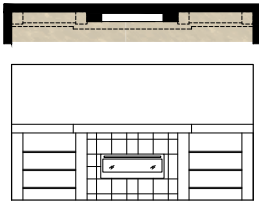


SELECT-1 ENSUITE OPTION

- Delete 60" x 36" acrylic shower base w/tiled walls & 6mm glass
- Add tiled shower w/2 niches & 10mm glass shower

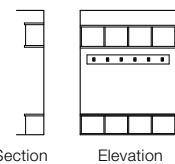
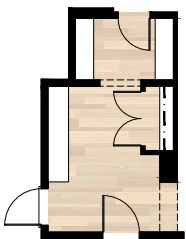


SELECT-4 FIREPLACE OPTION



SELECT-5 MUDROOM OPTION

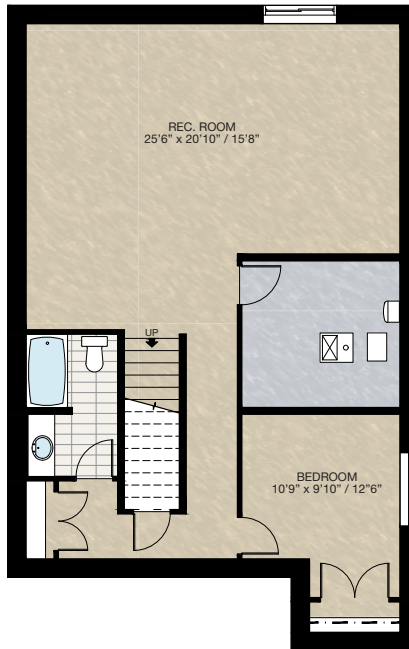
- *NOTE: Minimum 38' wide lot required for this option
- Extend mudroom 2'0" x 11'8" including foundation below
 - Additional 23 sq.ft. to main floor
 - Add built-in lockers
 - Delete 24" x 48" VSL window in mudroom
 - Add 2'8" exterior door (B slab w/ 20" x 20" clear glass insert) C/W cam locks
 - Add exterior light and switch
 - Upgrade mudroom light circuit to 4 way switches
 - Cannot be combined with **SELECT-2** option



MUDROOM LOCKER BUILT-IN DETAILS

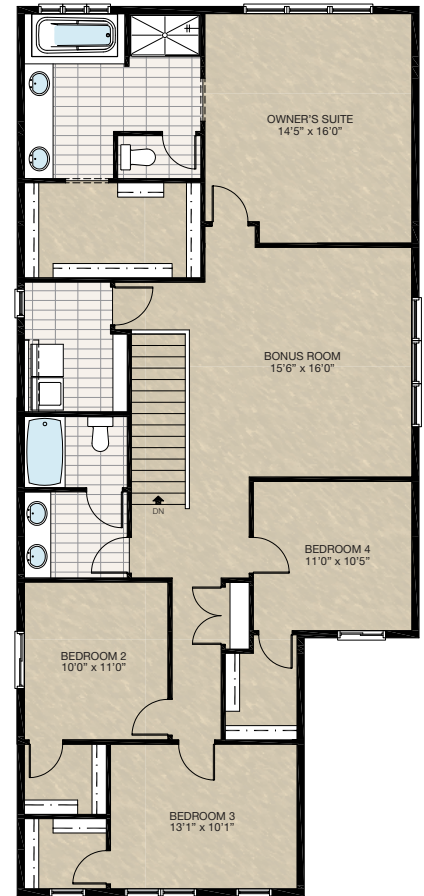
SELECT-2 BASEMENT DEVELOPMENT OPTION

- 883 Sq. Ft. Developed area
- Included finished basement stairwell
- Delete 2'-8" door top of stairwell
- Add 1 riser to stairwell for 9'-0" basement ceiling (8'-9" headroom clearance)
- 60" x 24" windows changed to 60" x 36"



SELECT-3 4 BEDROOM UPPER FLOOR OPTION

- Additional 58 sq.ft. to upper floor

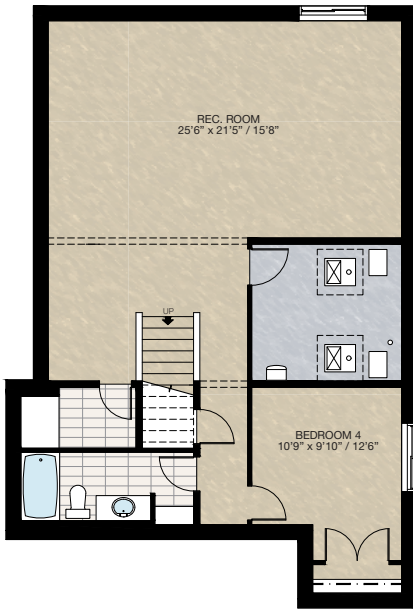


FEATURED OPTIONS

THE
STANLEY
2671 SQ.FT.

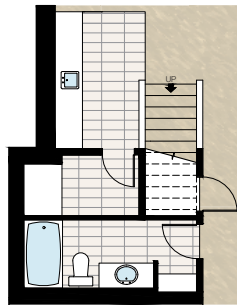
SELECT-6 BASEMENT DEVELOPMENT OPTION 2

- *NOTE: Minimum 38' wide lot required for this option. Must combine with **SELECT-5** option
- 913 Sq.Ft. developed area
- Included finished basement stairwell
- Delete 2'8" door top of stairwell
- Add 1 riser to stairwell for 9'0" ceiling (8'9" headroom clearance)
- 60" x 24" windows changed to 60" x 36"



SELECT-6A WET BAR OPTION

- *MUST combine with **SELECT-6** Basement Development option
- Add 10'0" wet bar with lower cabinetry only & bar sink
- Add light outlet & switch
- Add 2' x 4' full height plumbing wall



SELECT-7 ALTERNATIVE UPPER FLOOR OPTION

- Relocate main bath
- Add 2nd sink & light outlet with larger vanity to main bath
- Add second 2'6" door to main bath
- Larger secondary bedrooms
- Reduced owner's suite walk-in closet
- Reconfigure ensuite water closet
- Add one extra light outlet to hallway



Trico Homes is a local home builder, with new single and multi-family homes for sale in Calgary, Okotoks, Chestermere, Cochrane, Airdrie and DeWinton. Offering a great selection of starter, move-up, semi-estate and ultra-estate models in numerous communities, you'll find the house that's just right for you! Look for this model and many others in Ambleton, Arbour Lake, Belmont, Carrington, Chelsea, Cornerbrook, D'Arcy, Dawson's Landing, Glacier Ridge, Hamilton Heights, Homestead, Legacy, Midtown, Pine Creek, Precedence, Rivercrest, Seton, Sirocco, Verona West Townhomes, West83 Townhomes and Wolf Willow.



Renderings are artist's conceptions only and may vary by community and lot selection. Prices, floorplans, specifications and dimensions are approximate and are subject to change without notice. E.&O.E. © All rights reserved, including the right if reproduction in the whole or in part without the permission of Trico Homes.

Plan updated as of October 04, 2024.



tricohomes.com