





  
← 28' →  
Min. Lot Width

 3 Bedrooms

 2½ Bathrooms

# THE SIENNA

1460 SQ.FT.

Elements Specification

Elite Specification

---

---

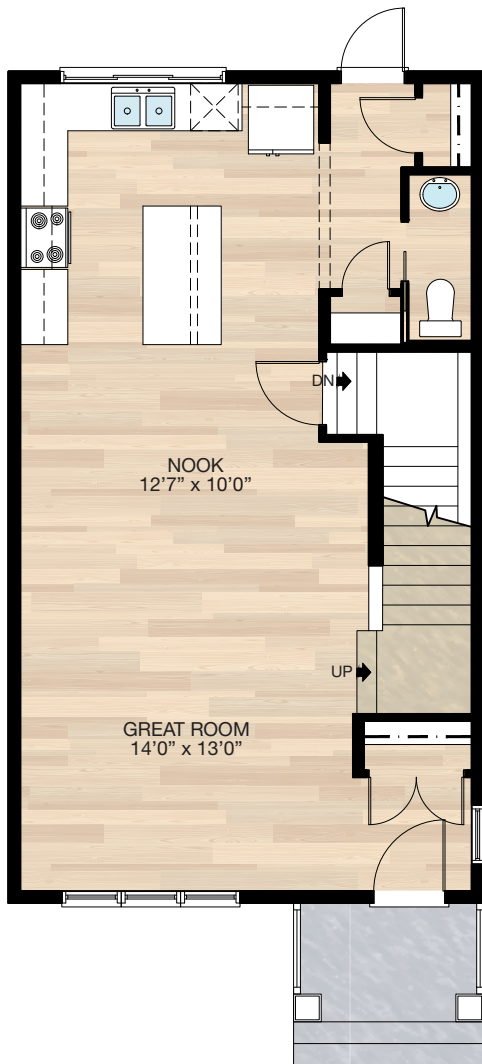
---



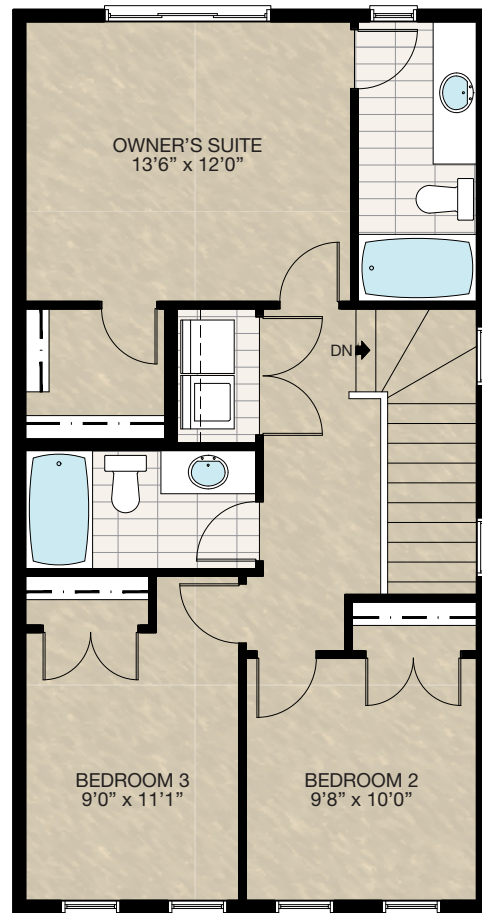
Trico Homes™  
The Heart of Homebuilding®

# STANDARD PLAN

THE  
**SIENNA**  
1460 SQ.FT.



**MAIN**  
700 SQ.FT.



**UPPER**  
760 SQ.FT.

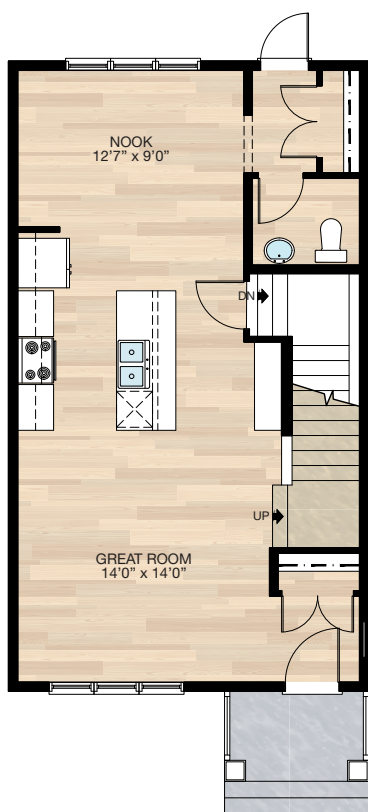


# FEATURED OPTIONS



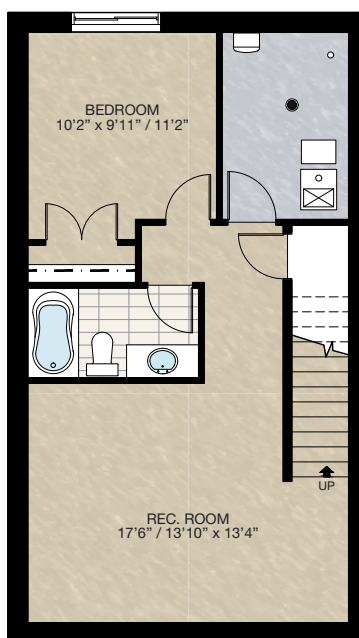
## SELECT-1 ALTERNATE KITCHEN OPTION

- Delete closet pantry & add 60" cabinet pantry (18" deep)
- Adjust ½ bath & increase rear closet
- Move kitchen to center of house
- Delete 84" x 40" window & add three 30" x 72" windows



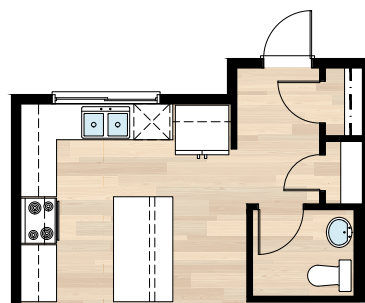
## SELECT-3 BASEMENT DEVELOPMENT OPTION

- 494 Sq.Ft. basement development
- Included finished basement stairwell
- Delete 2'8" passage door top of stairwell
- Add two risers to stairwell for 9'0" basement ceiling (8'9" headroom clearance)
- 60" x 24" window changed to 60" x 36"



## SELECT-4 MUDROOM OPTION

- Adds 16 sq.ft. including foundation
- Delete 10½" of lower cabinets
- Delete 84" x 48" window and add 72" x 48" window



HARDWOOD

DECK

CARPET

CONCRETE

TILE

LAMINATE

LINO

# NOTES

THE  
**SIENNA**  
1460 SQ.FT.

---

---

---

---

---

---

---

---

---

---

---

---

---

---

---

---

---

---

---

Trico Homes is a local home builder, with new single and multi-family homes for sale in Calgary, Okotoks, Chestermere, Cochrane, Airdrie and DeWinton. Offering a great selection of starter, move-up, semi-estate and ultra-estate models in numerous communities, you'll find the house that's just right for you! Look for this model and many others in Ambleton, Arbour Lake, Belmont, Carrington, Chelsea, Cornerbrook, D'Arcy, Dawson's Landing, Glacier Ridge, Hamilton Heights, Homestead, Legacy, Midtown, Pine Creek, Precedence, Rivercrest, Seton, Sirocco, Verona West Townhomes, West83 Townhomes and Wolf Willow.



Renderings are artist's conceptions only and may vary by community and lot selection. Prices, floorplans, specifications and dimensions are approximate and are subject to change without notice. E.&O.E. © All rights reserved, including the right if reproduction in the whole or in part without the permission of Trico Homes.

Plan updated as of March 20, 2023.

