

  
← 34' →  
Min. Lot Width

 3 Bedrooms

 2½ Bathrooms

 Double Garage

# THE WESTCHESTER

2392 SQ.FT.

Elements Specification

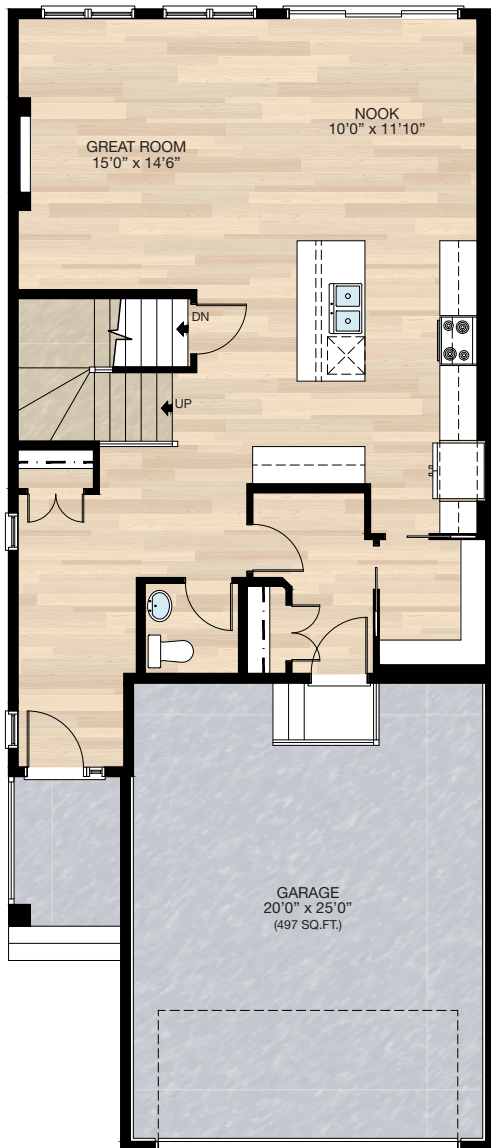
Elite Specification



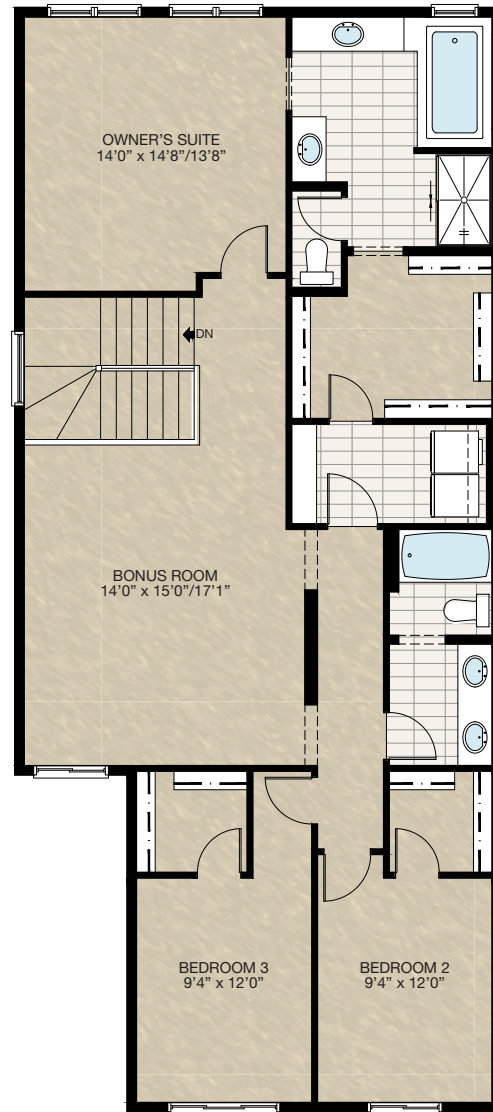
Trico Homes™  
The Heart of Homebuilding®

# STANDARD PLAN

THE  
WESTCHESTER  
2392 SQ.FT.



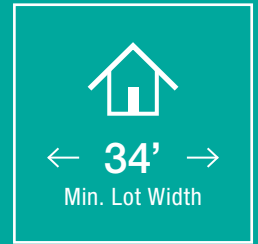
**MAIN**  
969 SQ.FT.



**UPPER**  
1423 SQ.FT.

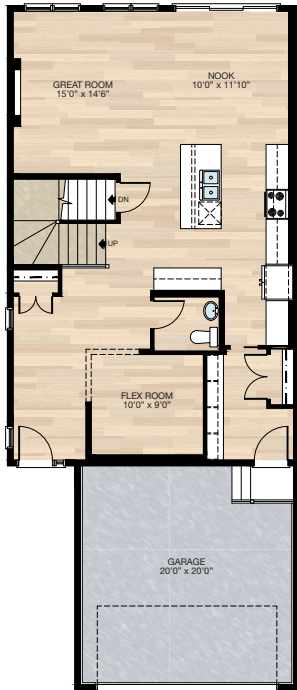


# FEATURED OPTIONS



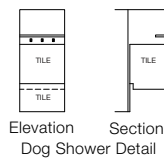
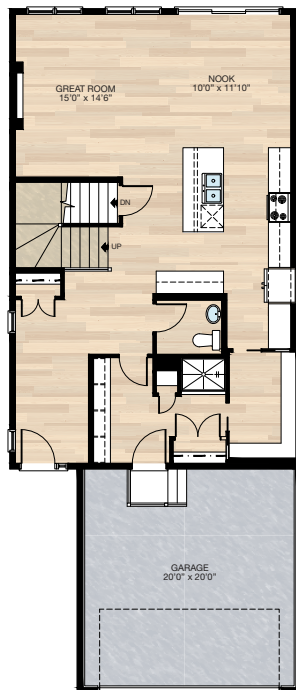
## SELECT-6 OPTIONAL FLEX ROOM

- Additional 96 sq.ft. to main floor (this reduces garage by 96 sq.ft.)
- Relocate half bath
- Relocate garage entrance
- Delete standard pantry & add cabinet pantry
- Add mudroom lockers
- Please see **SELECT-11** Basement Development for mechanical location revisions to the foundation plan



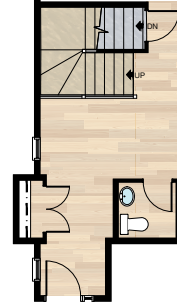
## SELECT-7 OPTIONAL MUDROOM

- Additional 96 sq.ft. to main floor (this reduces garage by 96 sq.ft.)
- Relocate half bath
- Relocate garage entrance
- Add cabinet pantry
- Add mudroom lockers
- Add dog shower & storage closet
- Please see **SELECT-11** Basement Development for mechanical location revisions to the foundation plan



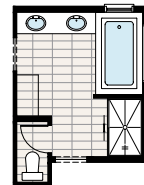
## SELECT-8 CANTILEVER ENTRY CLOSET OPTION

- Cantilever entry closet adding 11 sq.ft.
- Add additional railing to stairs
- Flush beam is added & 2" x 6" BRG wall is deleted
- Entry windows adjusted slightly
- 60" x 24" Window in basement deleted
- 40" x 40" Window in basement added



## SELECT-9 MAKE-UP DESK

- Remove 8.5" of tub deck & replace with vanity
- Move second sink to other vanity
- Delete small vanity & replace with make-up desk
- Add vanity light & electrical outlet

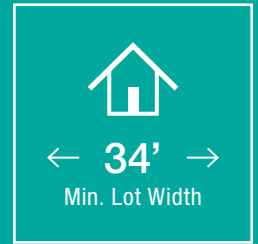


## SELECT-10 ADDITIONAL RAILING TO STAIRS

- Must add global option to develop the stairwell to the basement or basement development option
- Open up wall between stairs & great room
- Extend flush beam between stairs & great room
- Add 8' of railing
- Electrical changes as shown

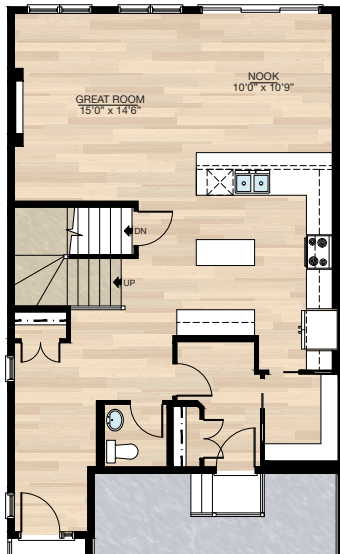


# FEATURED WESTCHESTER OPTIONS



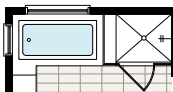
## SELECT-1 OPTIONAL KITCHEN

- Re-design kitchen (delete 2'3" upper cabinets, add 5'3" lower cabinets)
- Add two lights on a single switch
- Change 4-way switch to 3-way

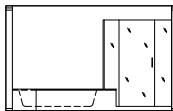


## SELECT-2 TILE & GLASS SHOWER OPTION

- Delete 36" x 60" fiberglass shower
- Add tile & glass shower



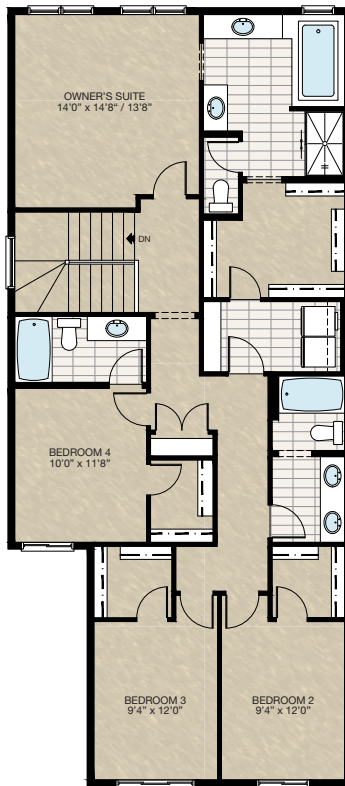
Plan



Elevation

## SELECT-3 FOUR BEDROOM OPTION

- Convert bonus room to 4th bedroom
- Includes walk-in closet & ensuite for 4th bedroom
- Relocates linen closet & increases linen shelves in laundry room

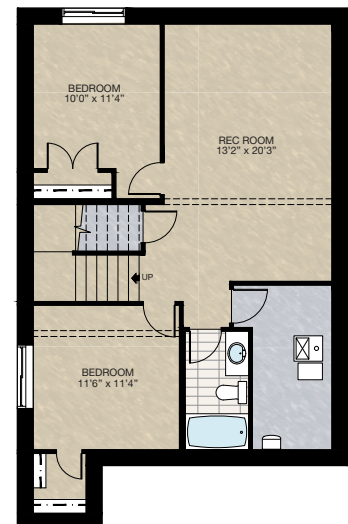
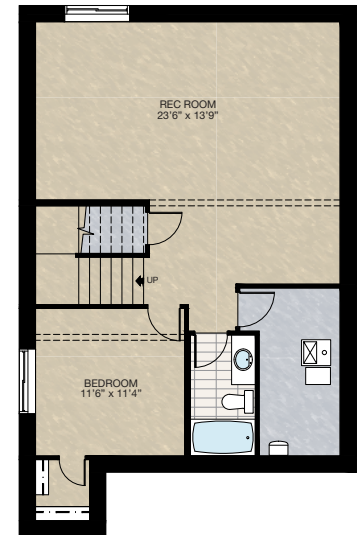


## SELECT-5 BASEMENT DEVELOPMENT OPTION

- 716 Sq.Ft. of developed area
- Includes finished basement stairwell
- Delete 2'8" door at top of stairwell
- Add 1 riser to stairs
- Increase basement foundation height to 9' (8'9" Headroom clearance)
- Windows changed from 60" x 24" to 60" x 36"
- \* Cannot be combined with SELECT-6 or 7

## SELECT-4 BASEMENT DEVELOPMENT OPTION

- 716 Sq.Ft. of developed area
- Includes finished basement stairwell
- Delete 2'8" door at top of stairwell
- Add 1 riser to stairs
- Increase basement foundation height to 9'0" (8'9" headroom clearance)
- Windows changed from 60" x 24" to 60" x 36"
- \* Cannot be combined with SELECT-6 or 7

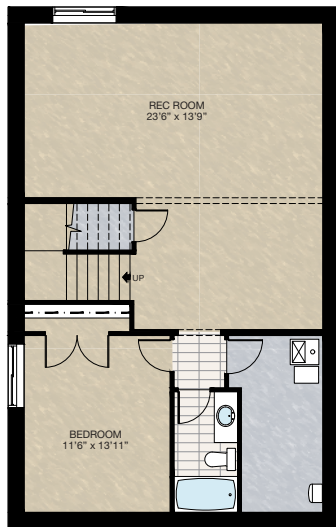


# FEATURED OPTIONS

THE  
WESTCHESTER  
2392 SQ.FT.

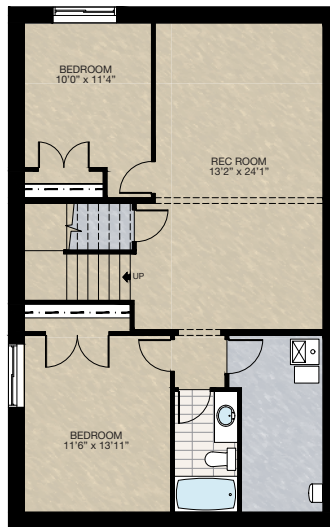
## SELECT-11 BASEMENT DEVELOPMENT OPTION

- 804 Sq.Ft. developed area
- Includes finished basement stairwell
- Delete 2'8" door at top of stairwell
- Add 1 riser to stairs
- Increase basement foundation height to 9' (8'9" headroom clearance)
- Windows changed from 60" x 24" to 60" x 36"
- \*Can only be combined with **SELECT-6 & 7**



## SELECT-12 BASEMENT DEVELOPMENT OPTION

- 804 Sq.Ft. developed area
- Includes finished basement stairwell
- Delete 2'8" door at top of stairwell
- Add 1 riser to stairs
- Increase basement foundation height to 9' (8'9" headroom clearance)
- Windows changed from 60" x 24" to 60" x 36"
- \*Can only be combined with **SELECT-6 & 7**



Trico Homes is a local home builder, with new single and multi-family homes for sale in Calgary, Okotoks, Chestermere, Cochrane, Airdrie and DeWinton. Offering a great selection of starter, move-up, semi-estate and ultra-estate models in numerous communities, you'll find the house that's just right for you! Look for this model and many others in Ambleton, Arbour Lake, Belmont, Carrington, Chelsea, Cornerbrook, D'Arcy, Dawson's Landing, Glacier Ridge, Hamilton Heights, Homestead, Legacy, Midtown, Pine Creek, Precedence, Rivercrest, Seton, Sirocco, Verona West Townhomes, West83 Townhomes and Wolf Willow.



Renderings are artist's conceptions only and may vary by community and lot selection. Prices, floorplans, specifications and dimensions are approximate and are subject to change without notice. E.&O.E. © All rights reserved, including the right if reproduction in the whole or in part without the permission of Trico Homes.

Plan updated as of October 04, 2024.



tricohomes.com