  
 ← 34' →  
 Min. Lot Width

-  5 Bedroom
-  4 Bathrooms
-  Double Garage

THE  
**SPRINGHILL**  
 2664 SQ.FT.

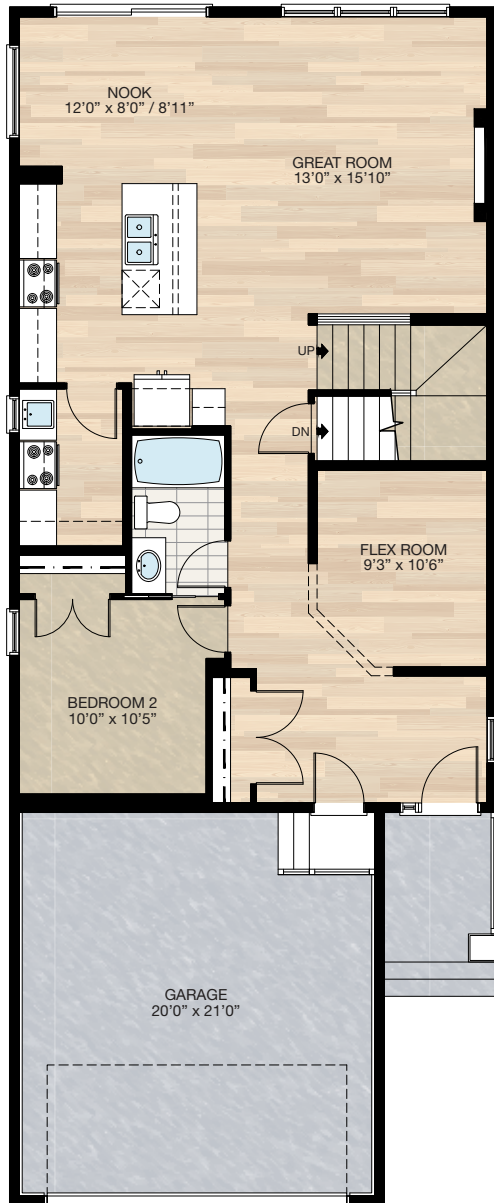
Elements Specification   
  Elite Specification



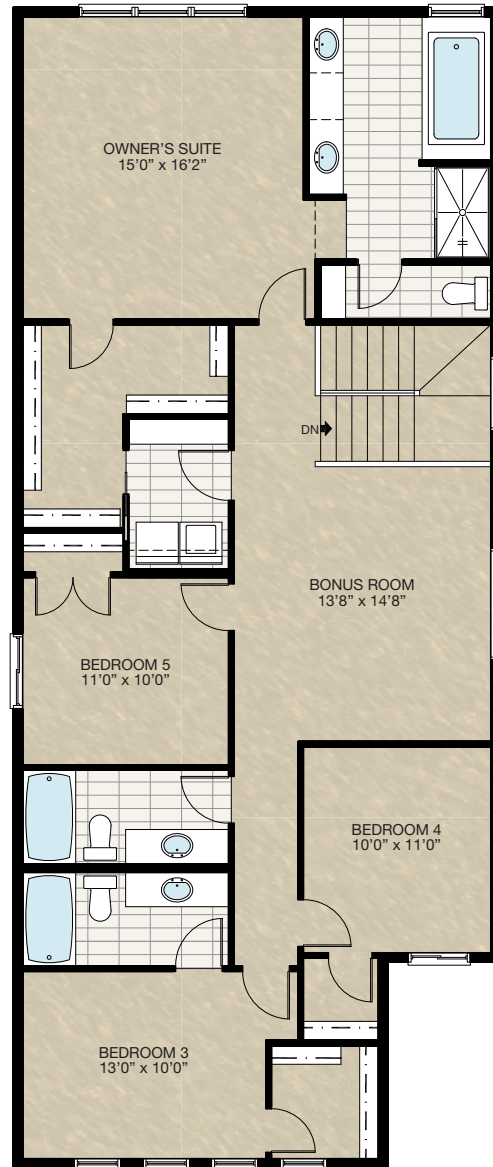
Trico Homes™  
 The Heart of Homebuilding®

# STANDARD PLAN

THE SPRINGHILL  
2664 SQ.FT.



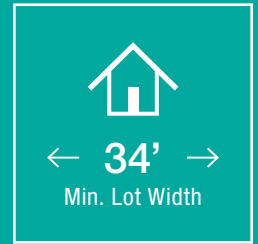
**MAIN**  
1118 SQ.FT.



**UPPER**  
1546 SQ.FT.

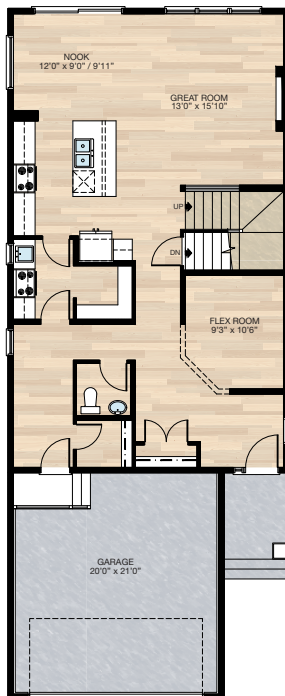


# FEATURED OPTIONS



## SELECT-1 SPICE KITCHEN, PANTRY & MUDROOM OPTION

- Delete Bedroom 2
- Delete tub/shower unit & vanity
- Kitchen moves towards garage 12" to increase nook size
- Decrease spice kitchen lower cabinet 12" & add 24" of upper cabinets
- Add pantry to spice kitchen
- Move 2'8" spice kitchen door to mudroom & replace with 2'6" door
- Change front entry closet doors from two 2'0" to two 2'6"
- Move garage door to mudroom
- Adjust window in mudroom



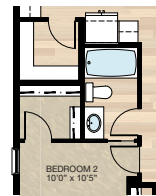
## SELECT-2 PANTRY & MUDROOM OPTION

- Delete spice kitchen & replace with pantry shelves
  - Reduce pantry 7.5" this space is added to mudroom & walk-in closet
  - Mudroom window & lighting adjusted
  - Pantry door reduced to 2'6"
- \*MUST be combined with **SELECT-1**



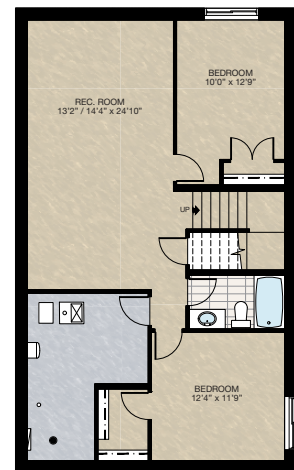
## SELECT-3 PANTRY & WALK-IN CLOSET OPTION

- Delete spice kitchen
- Delete 24" x 40" window
- Change 2'8" door to 2'6" door to new pantry
- Add pantry shelving
- Change two 2'0" doors to 2'6" door to bedroom closet
- Add light & switch to bedroom closet
- Add additional shelving to bedroom closet



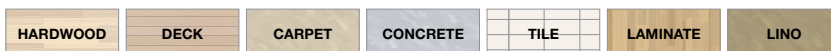
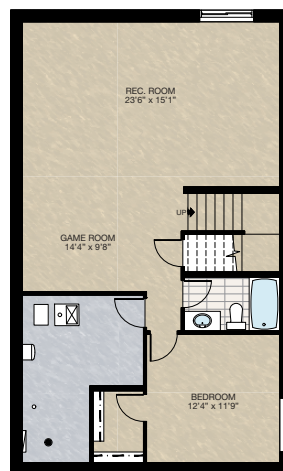
## SELECT-5 BASEMENT DEVELOPMENT OPTION 2

- 815 Sq.Ft. developed area
- Includes finished basement stairwell
- Delete 2'8" door at top of stairwell
- Add one riser to stairwell for 9'0" basement ceiling (8'9" headroom clearance)
- 60" x 24" DHSL changed to 60" x 36" DHSL
- 60" x 24" HSL changed to 60" x 36" HSL



## SELECT-4 BASEMENT DEVELOPMENT OPTION 1

- 815 Sq.Ft. developed area
- Includes finished basement stairwell
- Delete 2'8" door at top of stairwell
- Add one riser to stairwell for 9'0" basement ceiling (8'9" headroom clearance)
- 60" x 24" DHSL changed to 60" x 36" DHSL
- 60" x 24" HSL changed to 60" x 36" HSL

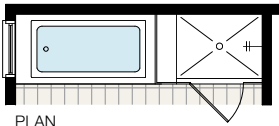


# FEATURED OPTIONS

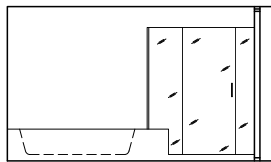
THE  
SPRINGHILL  
2664 SQ.FT.

## SELECT-7 GLASS & TILE ENSUITE SHOWER

- Delete fibreglass shower tray
- Add 10mm glass, tile curb & shower base
- Extend tub tiled deck



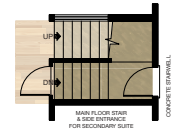
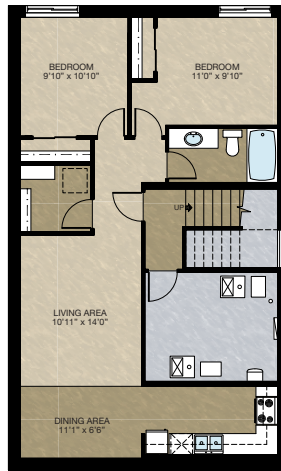
PLAN



ELEVATION

## SELECT-7 BASEMENT DEVELOPMENT OPTION 1

- 815 Sq.Ft. developed area
- Includes finished basement stairwell
- Delete 2'8" door at top of stairwell
- Add one riser to stairwell for 9'0" basement ceiling (8'9" headroom clearance)
- 60" x 24" DHSL changed to 60" x 36" DHSL
- 60" x 24" HSL changed to 60" x 36" HSL



MAIN FLOOR STAIR & SIDE ENTRANCE FOR SECONDARY SUITE



NOOK 12'0" x 8'0" / 8'11" GREAT ROOM 13'0" x 15'10"

Trico Homes is a local home builder, with new single and multi-family homes for sale in Calgary, Okotoks, Chestermere, Cochrane, Airdrie and DeWinton. Offering a great selection of starter, move-up, semi-estate and ultra-estate models in numerous communities, you'll find the house that's just right for you! Look for this model and many others in Ambleton, Arbour Lake, Belmont, Carrington, Chelsea, Cornerbrook, D'Arcy, Dawson's Landing, Glacier Ridge, Hamilton Heights, Homestead, Legacy, Midtown, Pine Creek, Precedence, Rivercrest, Seton, Sirocco, Verona West Townhomes, West83 Townhomes and Wolf Willow.



Renderings are artist's conceptions only and may vary by community and lot selection. Prices, floorplans, specifications and dimensions are approximate and are subject to change without notice. E.&O.E. © All rights reserved, including the right if reproduction in the whole or in part without the permission of Trico Homes.

Plan updated as of April 6, 2023.



tricohomes.com