
 5 Bedroom

 4 Bathrooms

 Double Garage

THE KINGSLEY ZLL

2492 SQ.FT.

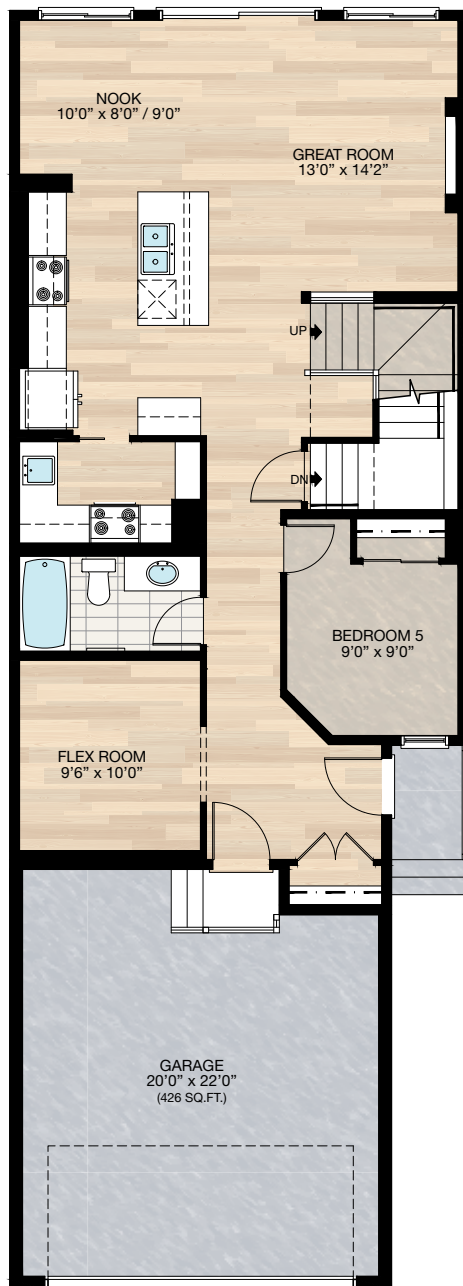
☐ Elements Specification



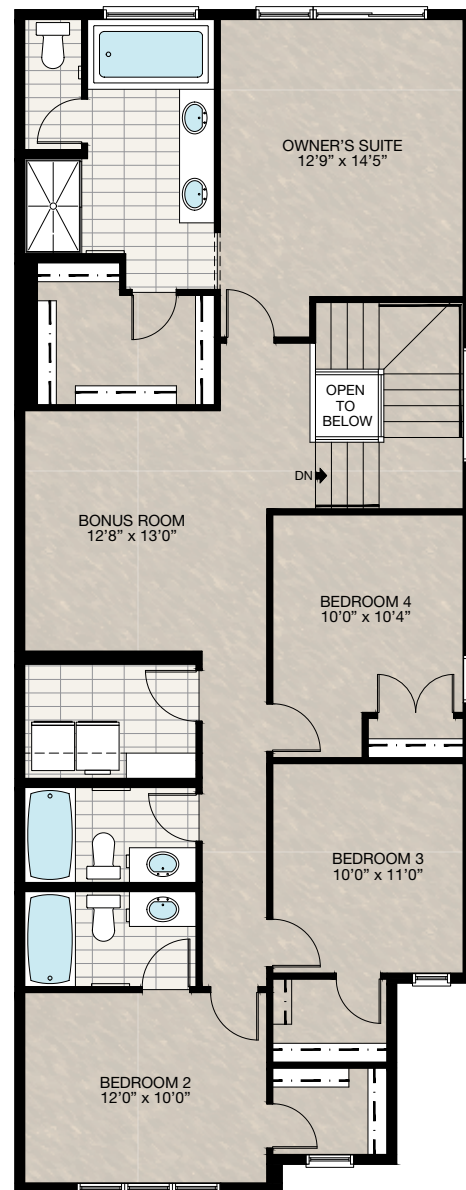
Trico Homes™
The Heart of Homebuilding®

STANDARD PLAN

THE
KINGSLEY ZLL
2492 SQ.FT.



MAIN
1068 SQ.FT.



UPPER
1424 SQ.FT.

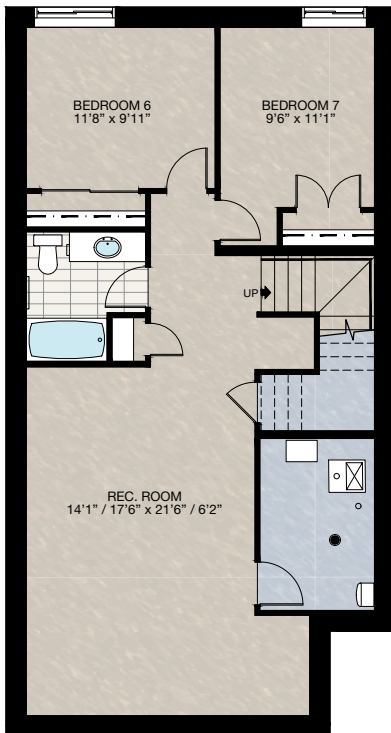


FEATURED OPTIONS



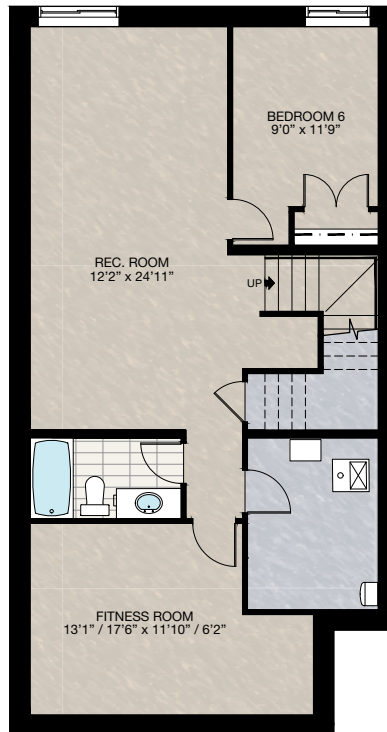
SELECT-1 BASEMENT DEVELOPMENT OPTION 1

- 808 Sq.Ft. Developed area
- Includes finished basement stairwell
- Add 1 riser to stairwell for 9'0" basement ceiling (8'9" headroom clearance)
- Upgrade 60" x 24" DHSL window to 60" x 36" DHSL
- Add 48" x 36" DHSL window



SELECT-2 BASEMENT DEVELOPMENT OPTION 2

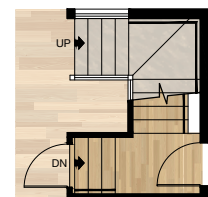
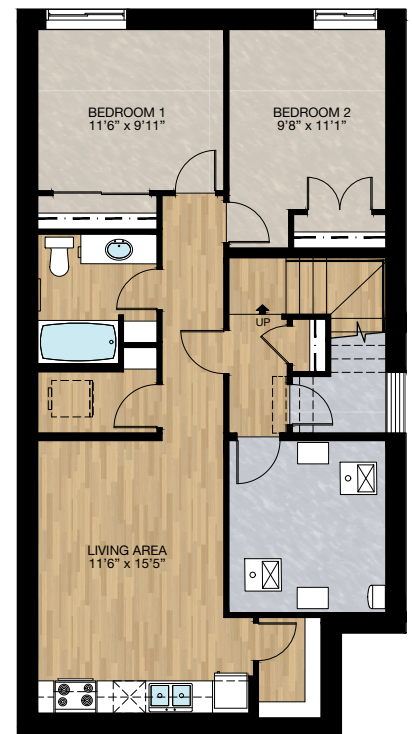
- 793 Sq.Ft. Developed area
- Includes finished basement stairwell
- Add 1 riser to stairwell for 9'0" basement ceiling (8'9" headroom clearance)
- Upgrade 60" x 24" DHSL window to 60" x 36" DHSL
- Add 48" x 36" DHSL window



SECONDARY SUITE OPTION

**Subject to grading. Max 1 riser permitted no steps can be added to exterior side entrance*

- 768 Sq.Ft. Developed area
- Includes finished basement stairwell
- Add 1 riser to stairwell for 9'0" basement ceiling (8'9" headroom clearance)
- Upgrade 60" x 24" DHSL window to 60" x 36" DHSL
- Add 48" x 36" DHSL window



MAIN FLOOR STAIRS FOR SECONDARY SUITE



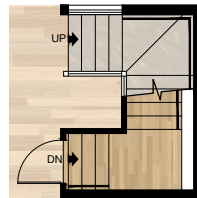
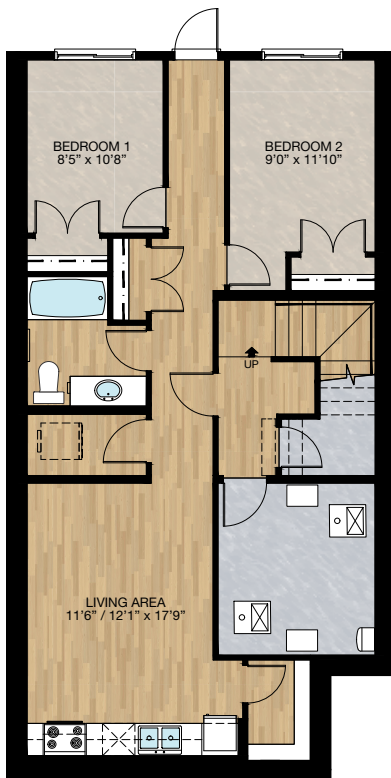
FEATURED OPTIONS

THE
KINGSLEY ZLL
2492 SQ.FT.

WALK-OUT SECONDARY SUITE OPTION

**This option is only available for walk-out homesite*

- 783 Sq.Ft. Developed area
- Includes finished basement stairwell
- Add 1 riser to stairwell for 9'0" basement ceiling (8'9" headroom clearance)
- Changed 60" x 60" P window to 60" x 60" HSL



MAIN FLOOR STAIRS FOR
WALK-OUT SECONDARY SUITE

Trico Homes is a local home builder, with new single and multi-family homes for sale in Calgary, Okotoks, Chestermere, Cochrane, Airdrie and DeWinton. Offering a great selection of starter, move-up, semi-estate and ultra-estate models in numerous communities, you'll find the house that's just right for you! Look for this model and many others in Ambleton, Belmont, Carrington, Chelsea, Cornerbrook, D'Arcy, Dawson's Landing, Glacier Ridge, Hamilton Heights, Homestead, Legacy, Midtown, Pine Creek, Precedence, Rivercrest, Seton, Sirocco, Verona West Townhomes, West83 Townhomes and Wolf Willow.



Renderings are artist's conceptions only and may vary by community and lot selection. Prices, floorplans, specifications and dimensions are approximate and are subject to change without notice. E.&O.E. © All rights reserved, including the right if reproduction in the whole or in part without the permission of Trico Homes.

Plan updated as of April 29, 2025.



tricohomes.com