


  
 ← 34' →  
 Min. Lot Width

-  3 Bedroom
-  2½ Bathrooms
-  Double Garage

# THE CAMBRIDGE 26

2283 SQ.FT.

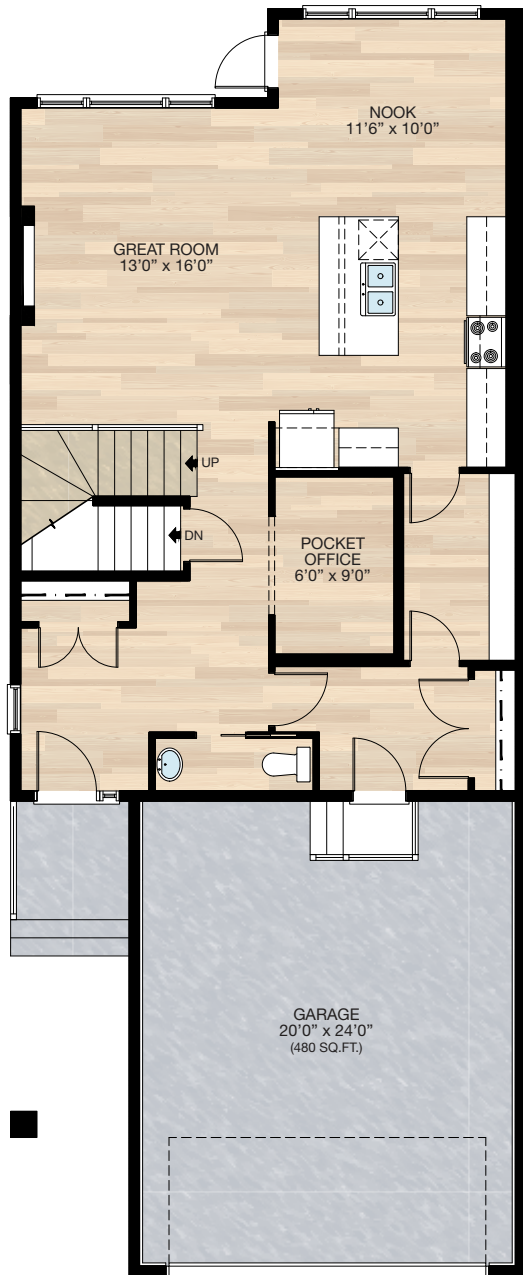
Elements Specification   
  Elite Specification   
  Elite Plus Specification



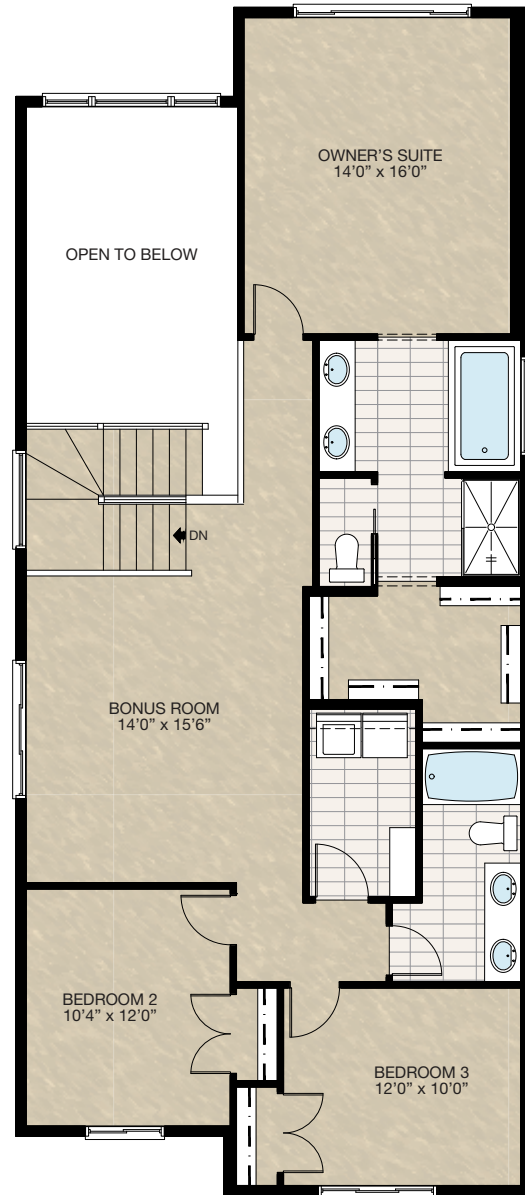
Trico Homes™  
The Heart of Homebuilding®

# STANDARD PLAN

THE  
CAMBRIDGE 26  
2283 SQ.FT.



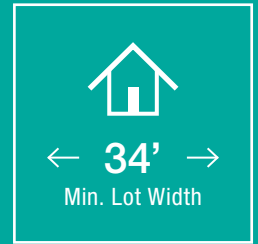
**MAIN**  
982 SQ.FT.



**UPPER**  
1301 SQ.FT.

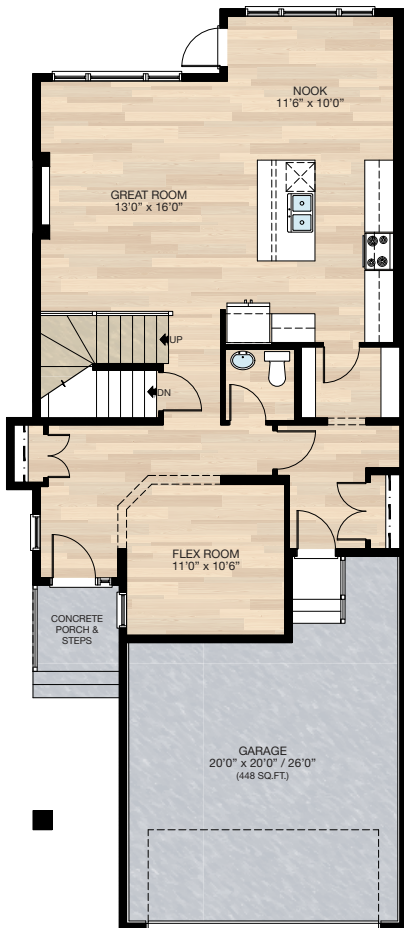
HARDWOOD	DECK	CARPET	CONCRETE	TILE	LAMINATE	LINO
----------	------	--------	----------	------	----------	------

# FEATURED OPTIONS



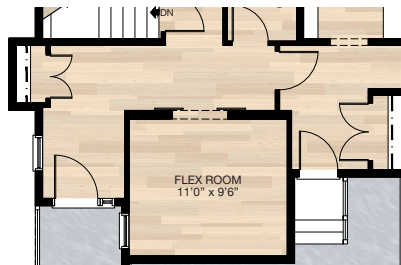
## SELECT-1 FLEX ROOM OPTION

- Add 41 sq.ft.
- Delete pocket office & add flex room extending into garage 4'0"
- Relocate half bath
- Cantilever front entry closet
- Add 30" x 72" VSL to Flex Room
- Revisions to foundation including post location (see **SELECT-8** basement development for reference)



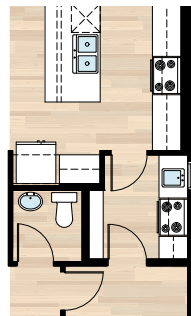
## SELECT-2 BARN DOORS TO FLEX ROOM OPTION

- MUST be combined with **SELECT-1**
- Close in flex room & add barn doors
- Flex room size is reduced by 1'0"



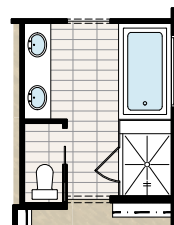
## SELECT-4 SPICE KITCHEN OPTION

- Must be combined with **SELECT-1**
- Delete one section of pantry shelves
- Delete 30" of upper & lower cabinets in kitchen
- Add spice kitchen including range, hoodfan, sink, & upper & lower cabinets
- Add 24" x 40" VSL window
- Delete 2'6" door & add 2'8" door



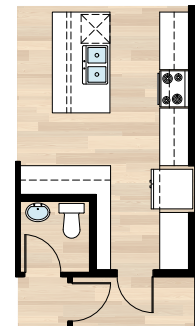
## SELECT-5 GLASS & TILE SHOWER OPTION

- Delete fiberglass shower
- Add 44" x 52" tile & 10mm glass shower
- Extend tub deck 12" for shower bench



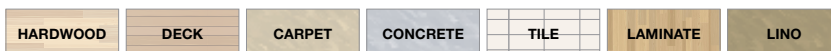
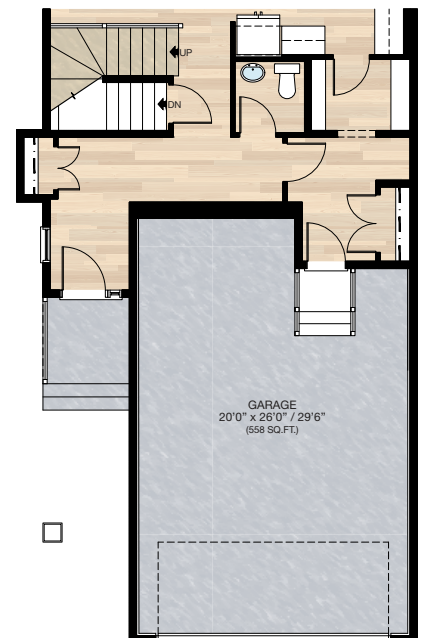
## SELECT-3 KITCHEN OPTION

- Must be combined with **SELECT-1**
- Delete pantry
- Add cabinet pantry & move fridge to exterior wall
- Additional cabinetry
- Add two pendant lights over the island



## SELECT-6 TANDEM GARAGE OPTION

- Garage extended into house 5'6" reducing the square footage by 78 sq.ft.
- Delete pocket office and relocate 1/2 bath
- Cantilever front entry closet revisions to foundation including post location (see **SELECT-9** basement development for reference)

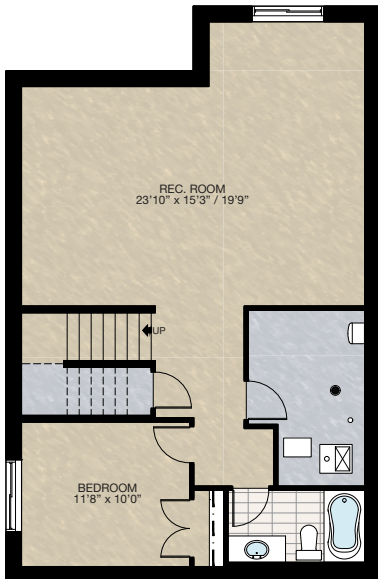


# FEATURED OPTIONS

THE  
CAMBRIDGE 26  
2283 SQ.FT.

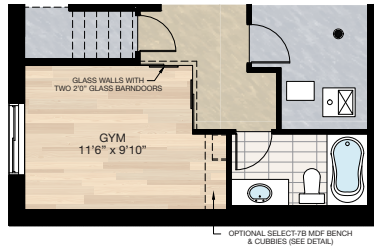
## SELECT-7 BASEMENT DEVELOPMENT OPTION

- 732 Sq.Ft. basement development
- Includes finished basement stairwell
- Delete 2'8" passage door at top of stairwell
- Add one riser to stairwell for 9'0" basement ceiling (8'-9" headroom clearance)
- Two 60" x 24" windows change to two 60" x 36"
- CANNOT be combined with any main floor options



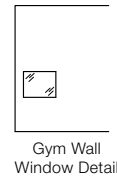
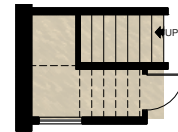
## SELECT-7A BASEMENT GYM OPTION

- Increase basement development by 6 sq.ft.
- \*Can ONLY be combined with **SELECT-7**



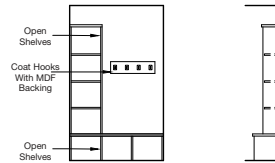
## SELECT-7C PLAY SPACE OPTION

- Developed 43 sq.ft. under basement stairs
- Includes 27" x 22" interior window
- \*Can ONLY be combined with **SELECT-7A**



## SELECT-7B MDF BENCH & CUBBIES OPTION

- \*Can ONLY be combined with **SELECT-7A**



Trico Homes is a local home builder, with new single and multi-family homes for sale in Calgary, Okotoks, Chestermere, Cochrane, Airdrie and DeWinton. Offering a great selection of starter, move-up, semi-estate and ultra-estate models in numerous communities, you'll find the house that's just right for you! Look for this model and many others in Ambleton, Arbour Lake, Belmont, Carrington, Chelsea, Cornerbrook, D'Arcy, Dawson's Landing, Glacier Ridge, Hamilton Heights, Homestead, Legacy, Midtown, Pine Creek, Precedence, Rivercrest, Seton, Sirocco, Verona West Townhomes, West83 Townhomes and Wolf Willow.



Renderings are artist's conceptions only and may vary by community and lot selection. Prices, floorplans, specifications and dimensions are approximate and are subject to change without notice. E.&O.E. © All rights reserved, including the right if reproduction in the whole or in part without the permission of Trico Homes.

Plan updated as of March 14, 2023.



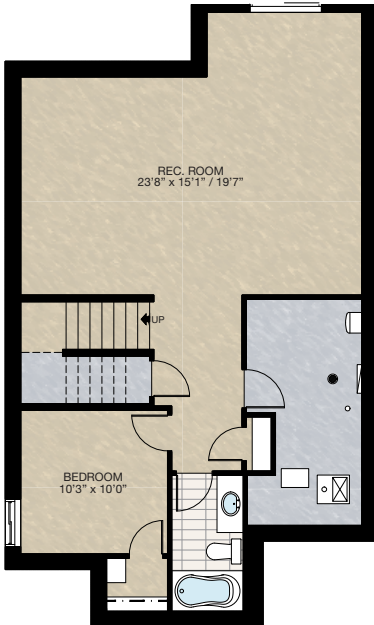
tricohomes.com

# FEATURED OPTIONS

THE  
CAMBRIDGE 26  
2292 SQ.FT.

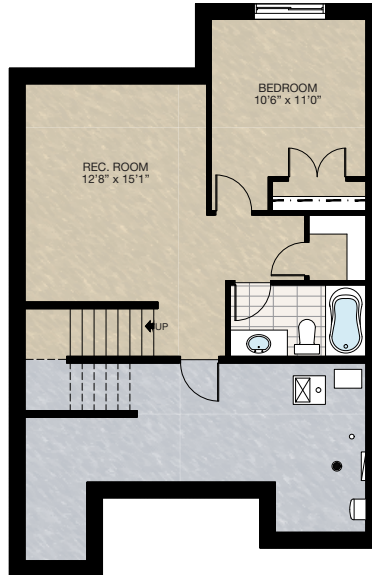
## SELECT-8 BASEMENT DEVELOPMENT OPTION 2

- 722 Sq.Ft. basement development
- Includes finished basement stairwell
- Delete 2'8" passage door at top of stairwell
- Add one riser to stairwell for 9'0" basement ceiling (8'9" headroom clearance)
- Two 60" x 24" windows change to 60" x 36" & 40" x 40"
- CAN ONLY be combined with **SELECT-1**



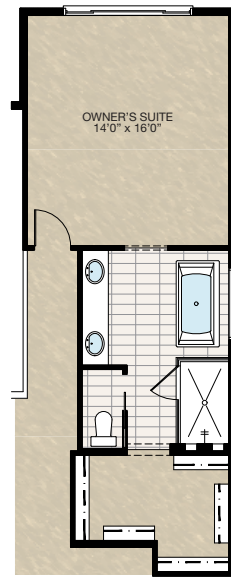
## SELECT-9 BASEMENT DEVELOPMENT OPTION 3

- 507 Sq.Ft. basement development
- Includes finished basement stairwell
- Delete 2'8" passage door at top of stairwell
- Add one riser to stairwell for 9'0" basement ceiling (8'9" headroom clearance)
- Delete one 60" x 24" window & change one 60" x 24" window to a 60" x 36"
- CAN ONLY be combined with **SELECT-6**



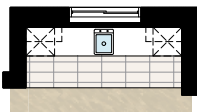
## SELECT-12 NOOK / ENSUITE OPTION

- Extend nook, upper floor & foundation 2'
- This adds 26 sq.ft. to main floor & 30 sq.ft. upper floor
- 12" is added to kitchen upper & lower cabinets as well as the island, 12" is added to the nook
- Upper floor space added to ensuite & walk-in closet
- Delete 60" x 36" soaker tub & 36" x 60" fiberglass shower
- Add 72" x 36" free standing tub & 44" x 72" 10mm glass & tile shower with niches
- Vanity increased to 8'
- Add light over tub



## SELECT-10 BASEMENT WET BAR OPTION

- Includes upper & lower cabinets
- Includes dishwasher, sink & opening for bar fridge
- Flooring is changed to tile
- Two down lights & switch added



## SELECT-11 OWNER'S BALCONY OPTION

- Add 11'0" x 4'6" balcony off master bedroom
- Includes vinyl decking, aluminum railing & soffit to underside of balcony
- Add 2'8" full French door, WP plug & exterior light with switch
- Open to below window moved up to match height of upper floor windows
- Main floor exterior light deleted & 2 down lights added

