





  
← 24' →  
Min. Lot Width

 3 Bedrooms

 2½ Bathrooms

THE  
**LOUGHEED** DUPLEX  
1600 SQ.FT.

Elements Specification

Elite Specification

---

---

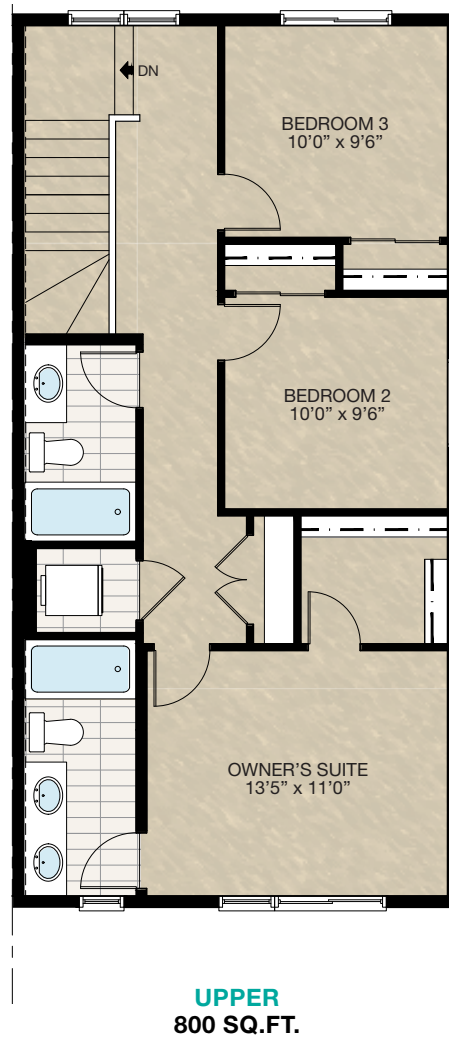
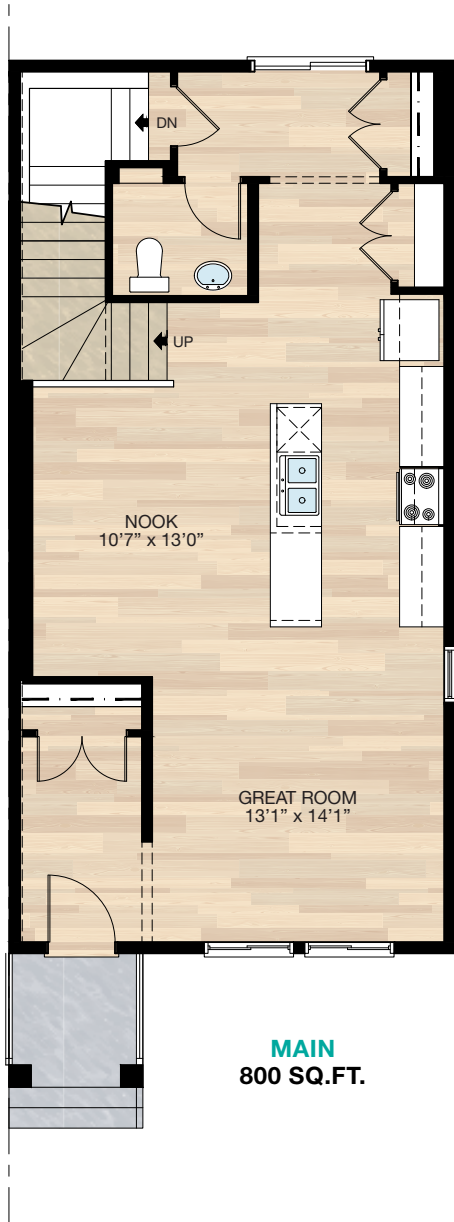
---



Trico Homes™  
The Heart of Homebuilding®

# STANDARD PLAN

THE  
LOUGHEED  
DUPLEX  
1600 SQ.FT.



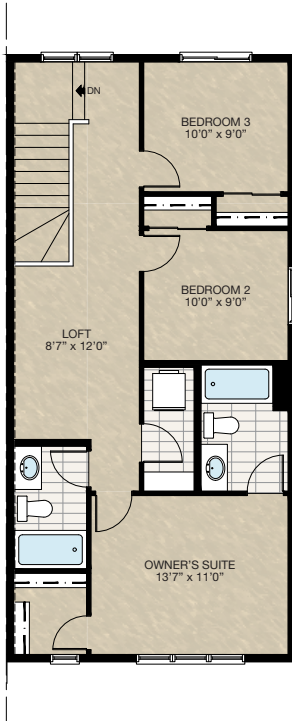
HARDWOOD	DECK	CARPET	CONCRETE	TILE	LAMINATE	LINO
----------	------	--------	----------	------	----------	------

# FEATURED OPTIONS



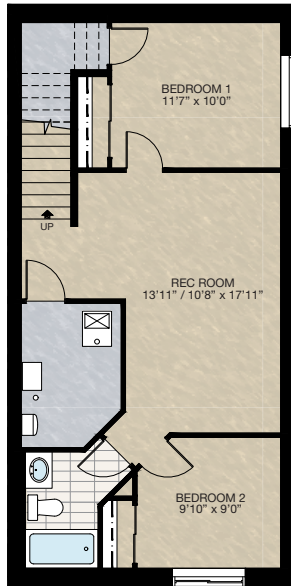
## SELECT-1 UPPER FLOOR LOFT OPTION

- Additional 40 sq.ft. to upper floor due to 2'0" extension cantilever over front of home
- Relocated owner's suite ensuite & closet
- Owner's ensuite with reduced vanity & from two sinks to one
- Relocated main bath & laundry



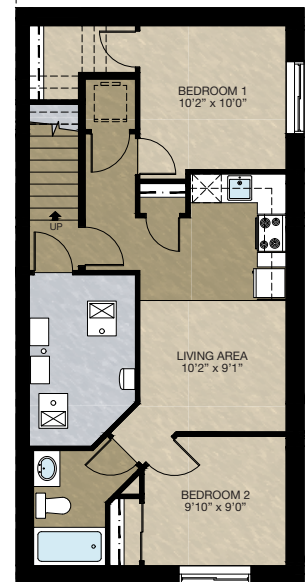
## SELECT-2 BASEMENT DEVELOPMENT OPTION

- 598 Sq.Ft. basement development
- Included finished basement stairwell
- Add 1 risers to stairwell for 9'0" basement ceiling (8'9" headroom clearance)
- Add 60" x 36" HLS window to front
- Upgraded existing window 60" x 24" DBSL to 60" x 36" DBSL



## SECONDARY SUITE OPTION

- 612 Sq.Ft. basement development
- Included finished basement stairwell
- Add 1 risers to stairwell for 9'0" basement ceiling (8'9" headroom clearance)
- Include washer & dryer rough-in only
- Second furnace & HRV added to accommodate secondary suite
- Add 60" x 36" HSL window to front
- Upgraded existing window 60" x 24" DBSL to 60" x 36" DBSL
- Included rear entrance 2'8" exterior door with switch & exterior light



## MAIN FLOOR REVISION FOR SECONDARY SUITE OPTION

