





**OCTOBER POSSESSION**



# THE RAEYA ZLL 1822 SQ.FT.

**168 Annette Villas NW**

 3 Bedrooms

 3 Bathrooms

## OPTIONS INCLUDED IN THIS HOME ARE:

- Homesite near future green spaces & community center
- 2-Bedroom legal secondary suite
- Main floor flex room & full bathroom with standing shower
- Quartz kitchen countertops
- Stainless steel appliances in kitchen
- 42" Upper cabinetry & crown moulding in kitchen
- 9' Knock-down ceilings on main floor
- Hardwood throughout main floor
- 3-Bedrooms with central bonus room on upper floor
- Full laundry room on upper floor
- 4-Piece owner's ensuite & walk-in closet
- 9' Foundation
- 11'x10' Rear deck with stairs to grade

## COME VISIT OUR SHOWHOMES

**170 & 174 Mitchell Road NW, Calgary, AB**

Call Justin Rampersad today at 403.972.0702 or  
email at [glacerridgelaned@tricohomes.com](mailto:glacerridgelaned@tricohomes.com)



THE RAEYA



THE SANDALWOOD

## SHOWHOME HOURS:

**Mon - Thurs:** 2pm - 8pm

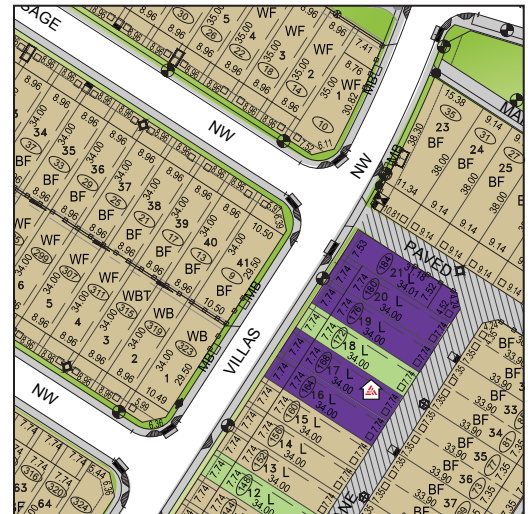
**Fri:** Closed

**Sat - Sun:** 12pm - 5pm

## PLUS RECEIVE YOUR OWN TRICO RED CARD



**& ENJOY INCREDIBLE  
ONGOING SAVINGS &  
REWARDS FROM OUR  
PARTNERS & RETAILERS**



**GLACIER RIDGE**

**Trico  
Homes™**  
The Heart of Homebuilding®



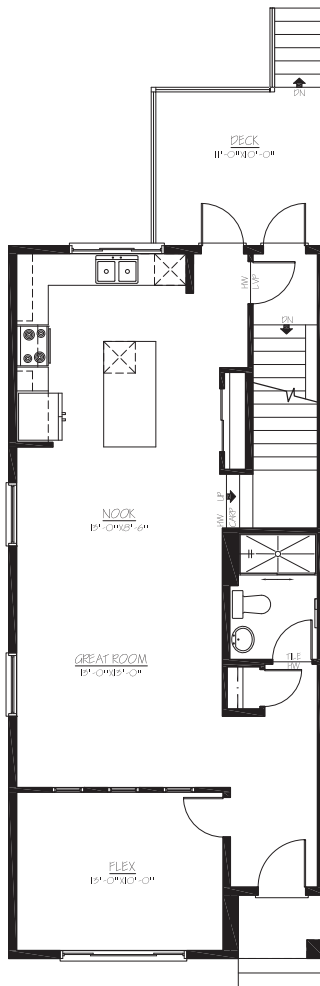
[tricohomes.com](http://tricohomes.com)



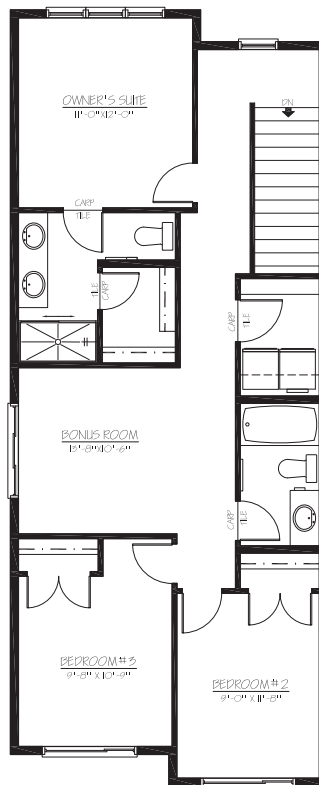
# THE RAEYA ZLL

1822 SQ.FT.

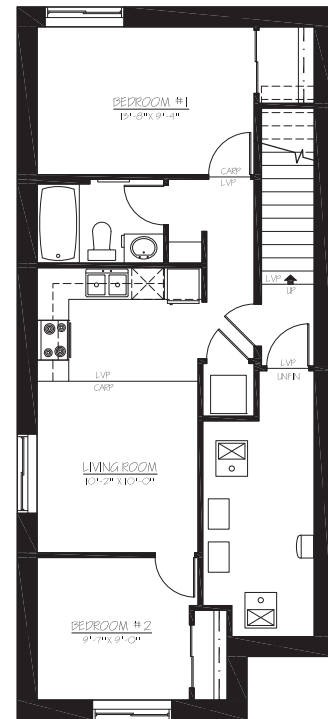
168 Annette Villas NW



**MAIN**  
878 SQ.FT.



**UPPER**  
944 SQ.FT.



**SECONDARY SUITE**  
633 SQ.FT.



Renderings are artist's conceptions only and may vary by community and lot selection. Prices, floorplans, specifications and dimensions are approximate and are subject to change without notice. E.&O.E. © All rights reserved, including the right if reproduction in the whole or in part without the permission of Trico Homes.

Plan updated June 23, 2025



tricohomes.com