


← 36' →
Min. Lot Width

 3 Bedrooms

 2½ Bathrooms

 Double Garage

THE CAMBRIDGE 28

2443 SQ.FT.

Elements Specification

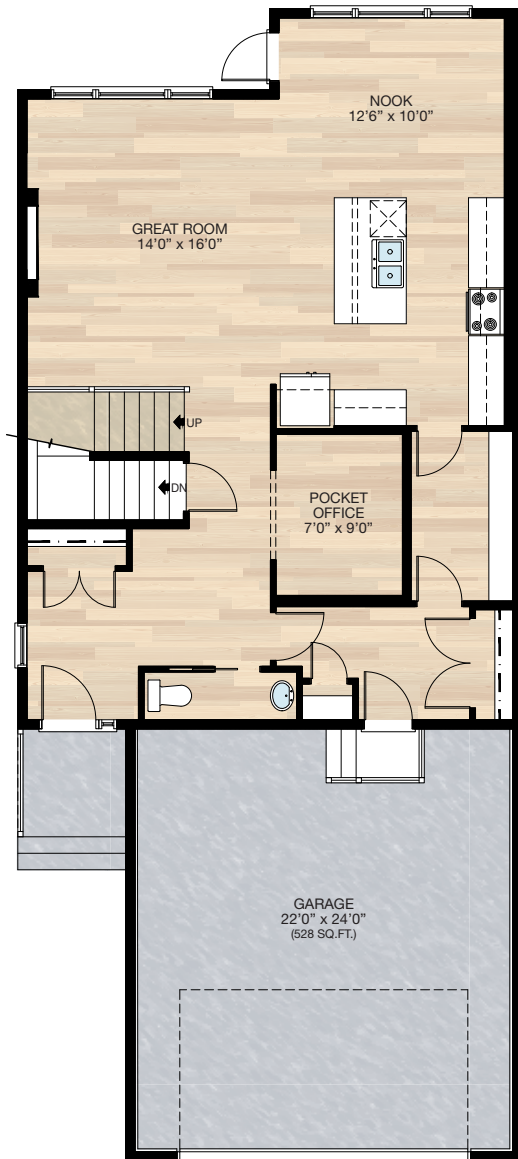
Elite Specification



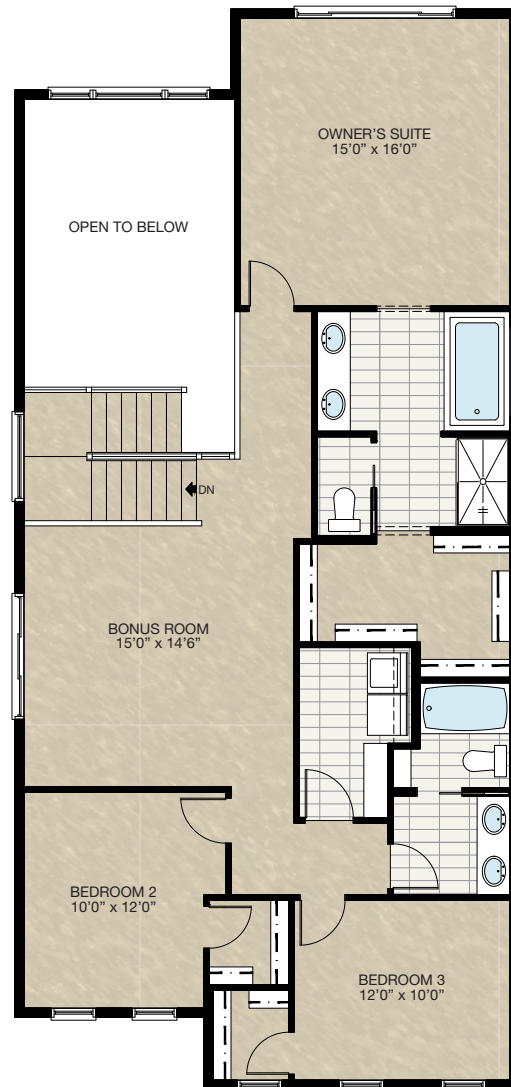
Trico Homes™
The Heart of Homebuilding®

STANDARD PLAN

THE
CAMBRIDGE 28
2443 SQ.FT.



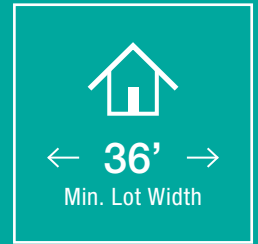
MAIN
1057 SQ.FT.



UPPER
1386 SQ.FT.

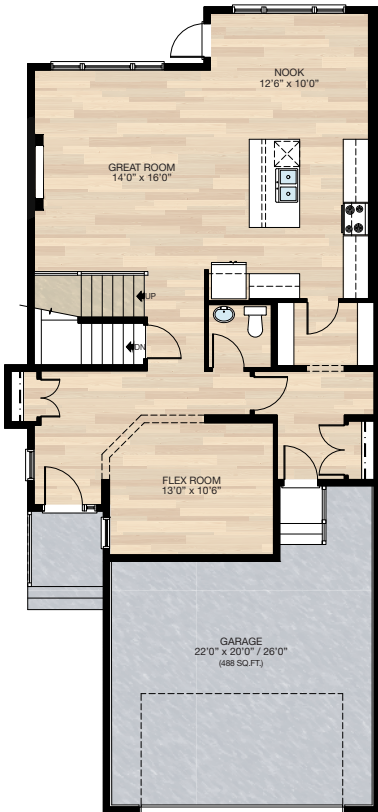


FEATURED OPTIONS



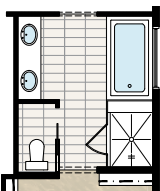
SELECT-1 FLEX ROOM OPTION

- Add 49 sq.ft.
- Delete pocket office & add flex room
- Relocate half bath
- Cantilever front entry closet
- Add 30" x 72" VSL to flex room
- Revisions to foundation including post location



SELECT-6 GLASS & TILE SHOWER OPTION

- Delete fiberglass shower
- Add 44" x 52" tile & 10mm glass shower
- Extend tub deck 12" for shower bench



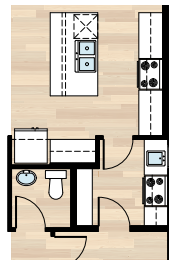
SELECT-2 BARN DOORS TO FLEX ROOM OPTION

- Must be combined with **SELECT-1**
- Add barn doors to flex room



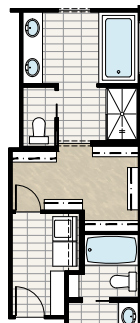
SELECT-4 SPICE KITCHEN OPTION

- Must be combined with **SELECT-1**
- Delete one section of pantry shelves
- Delete 30" of upper & lower cabinets in kitchen
- Add spice kitchen including range, hoodfan, sink, & upper & lower cabinets
- Add 24" x 40" VSL window
- Delete 2'6" door & add 2'8" door



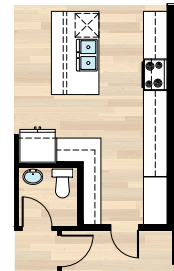
SELECT-5 ACCESS TO LAUNDRY FROM WIC OPTION

- Delete 28" of closet shelving
- Add 2'4" door
- Add two 3-way switches



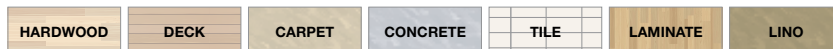
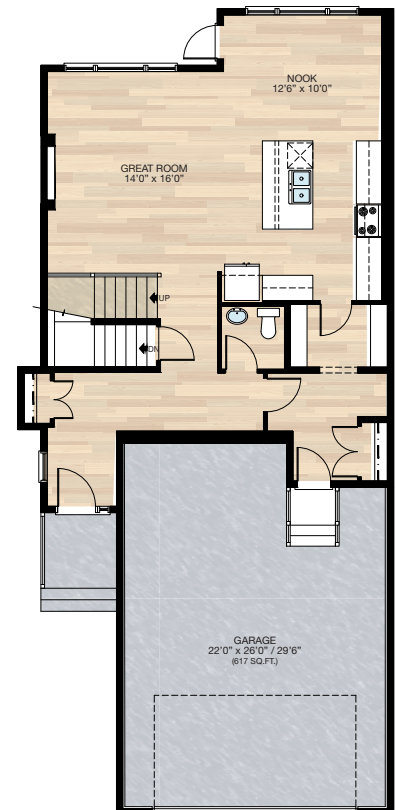
SELECT-3 KITCHEN OPTION

- Must be combined with **SELECT-1**
- Delete pantry
- Add cabinet pantry
- Additional cabinetry
- Add two pendant lights over the island



SELECT-7 TANDEM GARAGE OPTION

- Must be combined with **SELECT-1**
- Remove 128 sq.ft. from house
- Revisions to foundation including post location

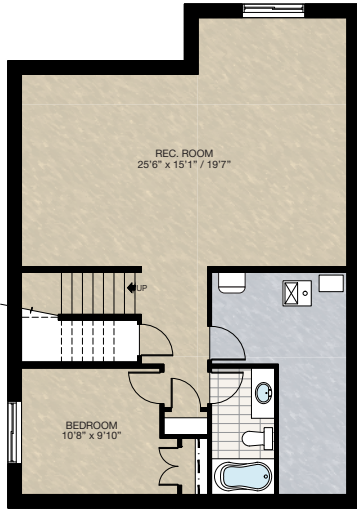


FEATURED OPTIONS

THE
CAMBRIDGE 28
2443 SQ.FT.

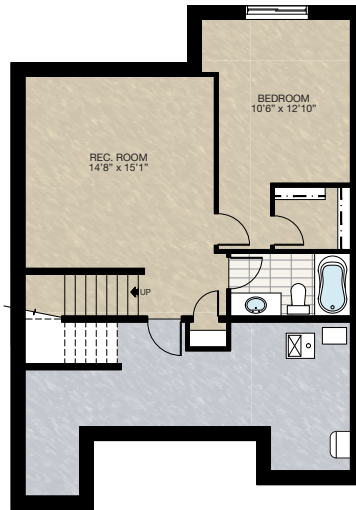
SELECT-8 BASEMENT DEVELOPMENT OPTION 1

- 752 Sq.Ft. basement development
- Includes finished basement stairwell
- Delete 2'8" passage door at top of stairwell
- Add one riser to stairwell for 9'0" basement ceiling (8'9" headroom clearance)
- Two 60" x 24" windows change to two 60" x 36"
- Cannot be combined with any main floor options



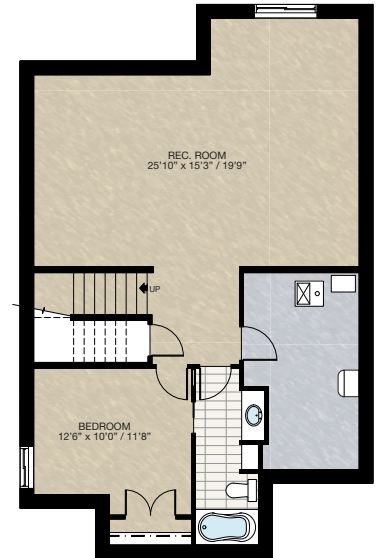
SELECT-9 BASEMENT DEVELOPMENT OPTION 2

- 559 Sq.Ft. basement development
- Includes finished basement stairwell
- Delete 2'8" passage door at top of stairwell
- Add one riser to stairwell for 9'0" basement ceiling (8'9" headroom clearance)
- Delete one 60" x 24" window
- Change one 60" x 24" window to 60" x 36"
- Can only be combined with **SELECT-7**



SELECT-10 BASEMENT DEVELOPMENT OPTION 3

- 797 Sq.Ft. basement development
- Includes finished basement stairwell
- Delete 2'8" passage door at top of stairwell
- Add one riser to stairwell for 9'0" basement ceiling (8'9" headroom clearance)
- Two 60" x 24" windows change to 60" x 36" & 40" x 40"
- Can only be combined with **SELECT-1**



Trico Homes is a local home builder, with new single and multi-family homes for sale in Calgary, Okotoks, Chestermere, Cochrane, Airdrie and DeWinton. Offering a great selection of starter, move-up, semi-estate and ultra-estate models in numerous communities, you'll find the house that's just right for you! Look for this model and many others in Ambleton, Arbour Lake, Belmont, Carrington, Chelsea, Cornerbrook, D'Arcy, Dawson's Landing, Glacier Ridge, Hamilton Heights, Homestead, Legacy, Midtown, Pine Creek, Precedence, Rivercrest, Seton, Sirocco, Verona West Townhomes, West83 Townhomes and Wolf Willow.



Renderings are artist's conceptions only and may vary by community and lot selection. Prices, floorplans, specifications and dimensions are approximate and are subject to change without notice. E.&O.E. © All rights reserved, including the right if reproduction in the whole or in part without the permission of Trico Homes.

Plan updated as of March 14, 2023.



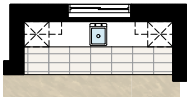
tricohomes.com

FEATURED CAMBRIDGE 28 OPTIONS

THE
CAMBRIDGE 28
2443 SQ.FT.

SELECT-11 BASEMENT WET BAR OPTION

- Includes upper & lower cabinets
- Includes dishwasher, sink & opening for bar fridge
- Flooring is changed to tile
- Two down lights & switch added

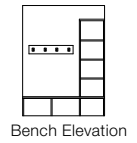
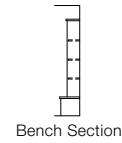


SELECT-13 BASEMENT DEVELOPMENT OPTION

- 797 Sq.Ft. basement development
- Includes finished basement stairwell
- Delete 2'8" passage door at top of stairwell
- Add 1 riser to stairwell for 9'0" basement ceiling (8'9" headroom clearance)
- Two 60" x 24" windows change to 60" x 36" & 40" x 40"
- Side window location moved due to cantilever above
- Bathroom & furnace location changed slightly
- *Can only be combined with **SELECT-1**

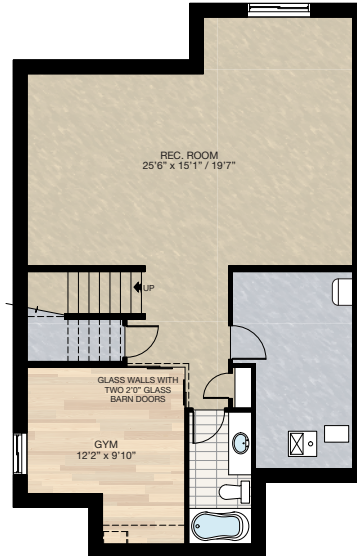
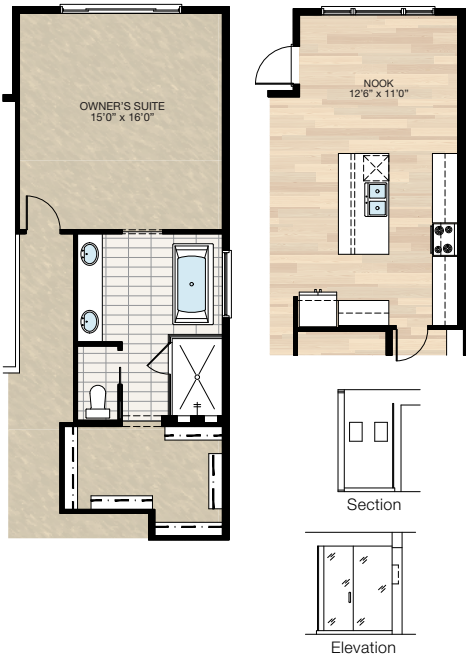
SELECT-13A MDF BENCH & CUBBIES OPTION

*Can only be combined with **SELECT-13**



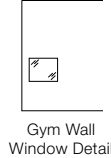
SELECT-12 NOOK / ENSUITE OPTION

- Extend nook, upper floor & foundation 2'
- This adds 28 sq.ft. to main floor & 32 sq.ft. upper floor
- 12" is added to kitchen upper & lower cabinets as well as the island, 12" is added to the nook
- Upper floor space added to ensuite & walk-in closet
- Delete 60" x 36" soaker tub & 36" x 60" fiberglass shower
- Add 72" x 36" free standing tub & 48" x 72" 10 mm glass & tile shower with niches
- Vanity increased to 8'
- Add light over tub



SELECT-13B PLAY SPACE OPTION

- Develop 43 sq.ft. under basement stairs
- Includes 27" x 22" interior window
- *Can only be combined with **SELECT-13**



Gym Wall
Window Detail

SELECT-14 OWNER'S SUITE BALCONY OPTION

- Add 12'0" x 4'6" balcony off Owner's Suite
- Includes vinyl decking, aluminum railing & soffit to u/s of balcony
- Add 2'8" full french door, WP plug & exterior light with switch
- Open to below window moved up to match height of upper floor windows
- Main floor exterior light deleted & 2 down lights added

