



← 34' →
Min. Lot Width

 3 Bedroom

 2.5 Bathrooms

 Double Garage

THE RIVERSIDE

2439 SQ.FT.

Elements Specification

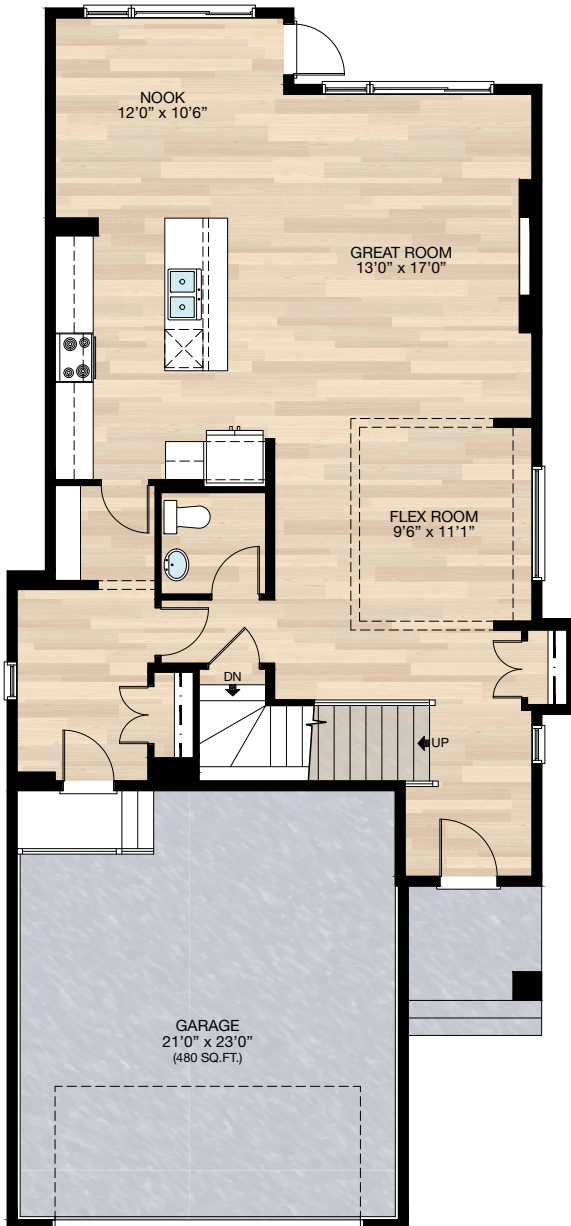
Elite Specification



Trico Homes™
The Heart of Homebuilding®

STANDARD PLAN

THE RIVERSIDE
2439 SQ.FT.



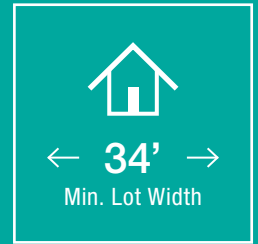
MAIN
1085 SQ.FT.



UPPER
1354 SQ.FT.

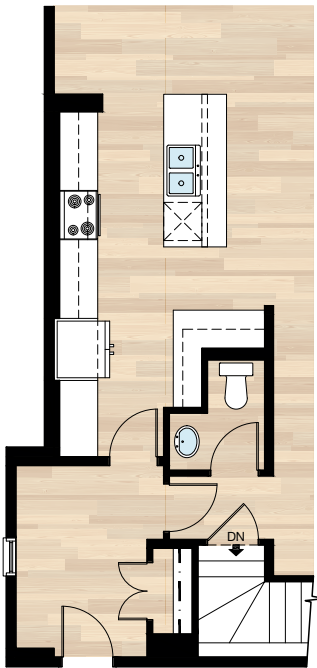
HARDWOOD	DECK	CARPET	CONCRETE	TILE	LAMINATE	LINO
----------	------	--------	----------	------	----------	------

FEATURED OPTIONS

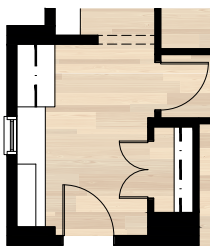


SELECT-1 KITCHEN OPTION

- Delete pantry & wire shelving
- Reconfigure kitchen with additional cabinetry & counter
- Added cabinet pantry
- Reconfigured half bath
- Move motion switch to mudroom
- Add one 4" downlight to kitchen

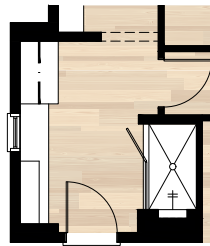


SELECT-2 MUDROOM LOCKER BUILT-IN OPTION

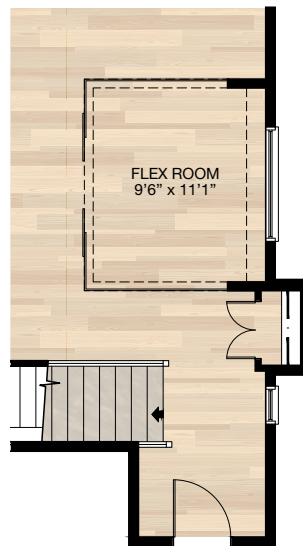


SELECT-3 DOG WASH & MUDROOM LOCKER BUILT-IN OPTION

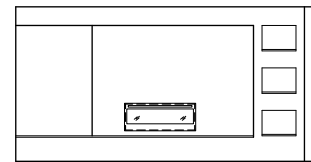
- Delete closet
- Added HRV diffuser
- Added 4" downlight & switch for shower



SELECT-4 FLEX ROOM OPTION



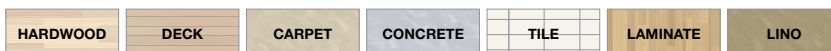
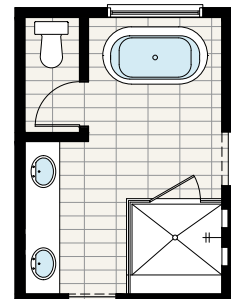
SELECT-5 GREAT ROOM FIREPLACE OPTION



FIRE PLACE ELEVATION

SELECT-6 ENSUITE OPTION

- Delete 72"x36" soaker tub & tile decking
- Delete 60"x36" acrylic shower base with tile & 6mm sliding glass door
- Add 60"x60" tile shower with tile bench & niches, with 10mm glass
- Add 66"x36" freestanding tub

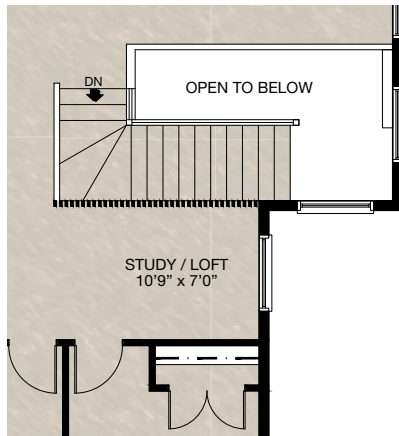


FEATURED OPTIONS

THE
RIVERSIDE
2439 SQ.FT.

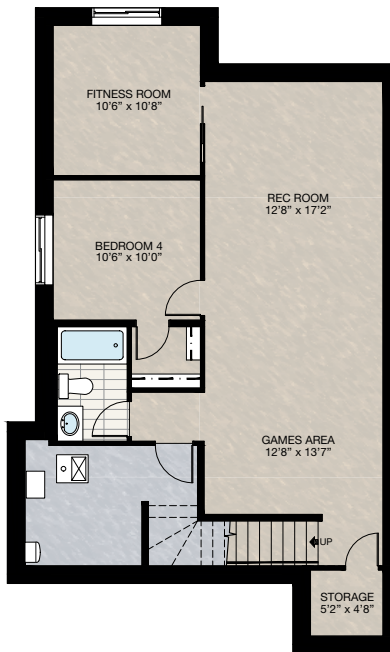
SELECT-7 STUDY / LOFT SLAT WALL OPTION

- Delete 42" stub wall



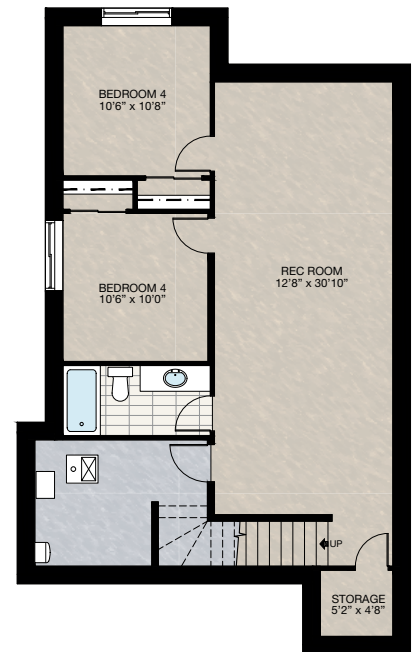
SELECT-8 BASEMENT DEVELOPMENT OPTION 1

- 826 Sq.Ft. developed area
- Includes finished basement stairwell
- Add 1 riser to stairwell for 9'0" basement ceiling (8'9" headroom clearance)
- Upgrade both 60"x24" windows to 60"x36"



SELECT-9 BASEMENT DEVELOPMENT OPTION 2

- 822 Sq.Ft. developed area
- Includes finished basement stairwell
- Add 1 riser to stairwell for 9'0" basement ceiling (8'9" headroom clearance)
- Upgrade both 60"x24" windows to 60"x36"



Trico Homes is a local home builder, with new single and multi-family homes for sale in Calgary, Okotoks, Chestermere, Cochrane, Airdrie and DeWinton. Offering a great selection of starter, move-up, semi-estate and ultra-estate models in numerous communities, you'll find the house that's just right for you! Look for this model and many others in Ambleton, Belmont, Brawn Landing, Carrington, Chelsea, Chelsea Court Townhomes, Cornerbrook, Colours of Seton Townhomes, Creekview, D'Arcy, Glacier Ridge, Hamilton Heights, Harmony, Homestead, Legacy, Midtown, Pine Creek, Precedence, Rivercrest, Seton, Sirocco, Southbow, West Springs, West83 Townhomes, and Wolf Willow.



Renderings are artist's conceptions only and may vary by community and lot selection. Prices, floorplans, specifications and dimensions are approximate and are subject to change without notice. E.&O.E. © All rights reserved, including the right if reproduction in the whole or in part without the permission of Trico Homes.

Plan updated as of May 27, 2024.



tricohomes.com