



**SPRING 2025 POSSESSION**



# THE REGENT 1344 SQ.FT.

**106 - 285 Chelsea Court**



2 Bedrooms



3½ Bathrooms



Single Garage

### OPTIONS INCLUDED IN THIS HOME ARE:

- Homesite facing green space
- Moonlight colour palette
- Entry level flex room with full bathroom
- Open concept main floor
- 9' Knock-down ceilings on main floor
- Upgraded semi-built-in kitchen with appliances
- Upgraded flush mounted LED lights in great room
- Zebra blinds
- Dual bedrooms with separate ensuites & walk-in closets
- LVP flooring on upper floor
- A/C rough-ins
- Gas line to deck
- Minutes away from eco-park, green space, schools, neighbourhood plaza & East Hills Shopping Centre

### COME VISIT OUR SHOWHOME

**259 Chelsea Road, Chestermere, AB**  
Call Sam Bibanco today at 587.496.8192 or  
email at [chelseacourt@tricohomes.com](mailto:chelseacourt@tricohomes.com)



### SHOWHOME HOURS:

**Mon - Thurs:** 2pm - 8pm

**Fri:** Closed

**Sat - Sun:** 12pm - 5pm

### PLUS RECEIVE YOUR OWN TRICO RED CARD



**& ENJOY INCREDIBLE  
ONGOING SAVINGS &  
REWARDS FROM OUR  
PARTNERS & RETAILERS**



# Chelsea Court

TOWNHOMES

# Trico Homes™

The Heart of Homebuilding®



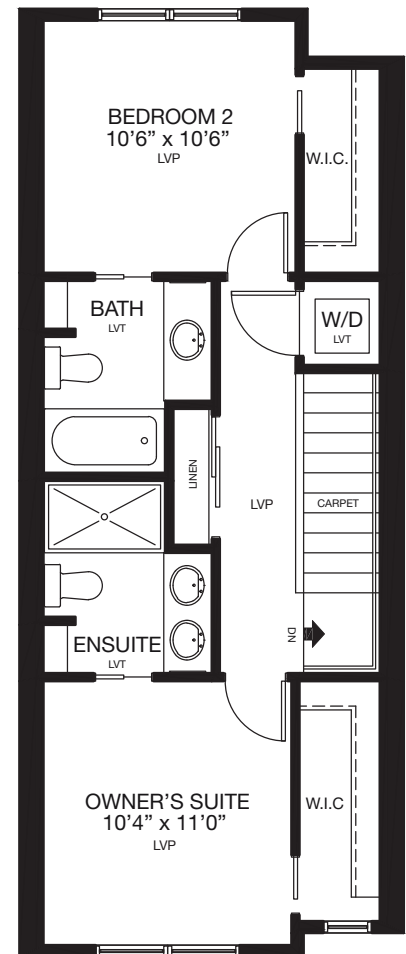
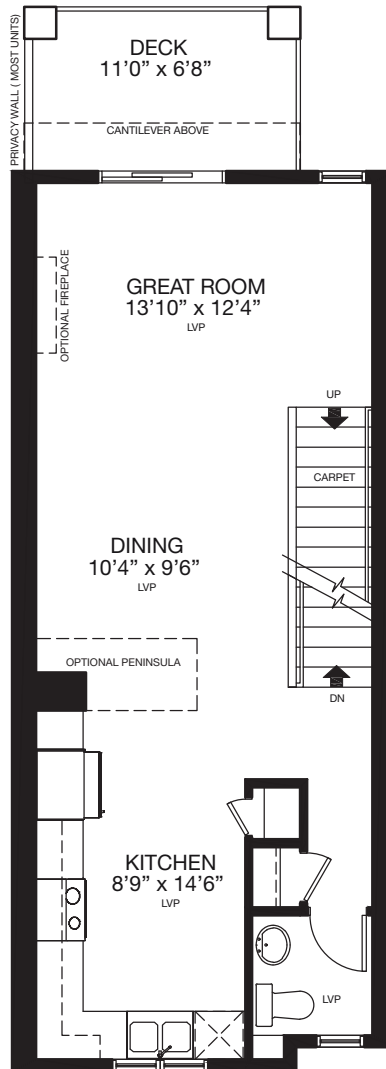
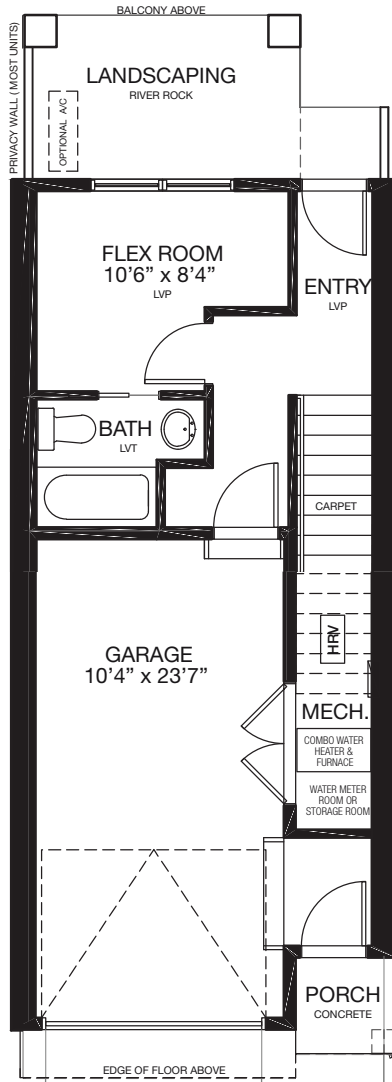
[tricohomes.com](http://tricohomes.com)



# THE REGENT

## 1344 SQ.FT.

106 - 285 Chelsea Court



Renderings are artist's conceptions only and may vary by community and lot selection. Prices, floorplans, specifications and dimensions are approximate and are subject to change without notice. E.&O.E. © All rights reserved, including the right if reproduction in the whole or in part without the permission of Trico Homes.

Plan updated September 12, 2024



trichomes.com