


← 32' →
Min. Lot Width

 5 Bedrooms

 4 Bathrooms

 Double Garage

THE LAWSON

2538 SQ.FT.

Elements Specification

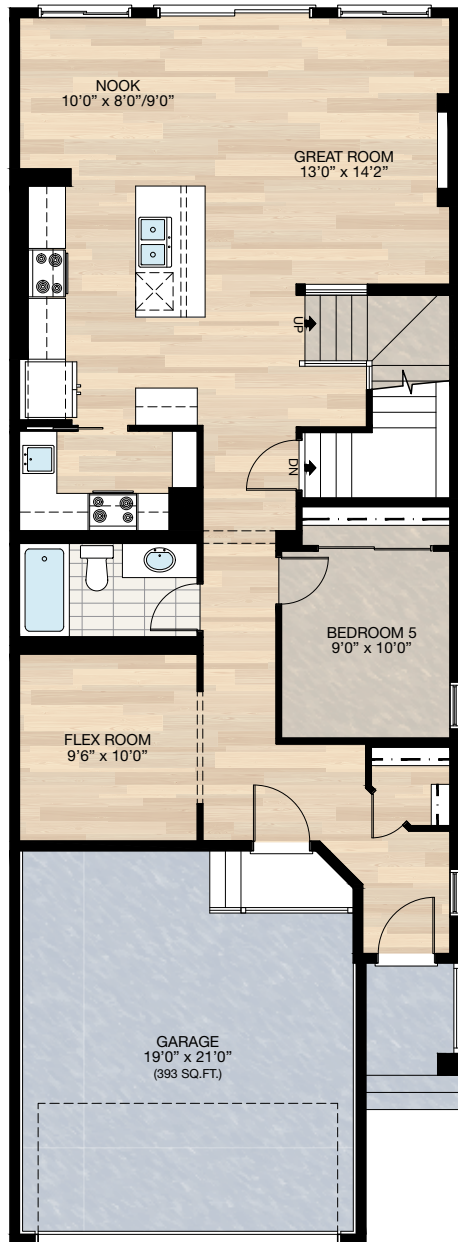
Elite Specification



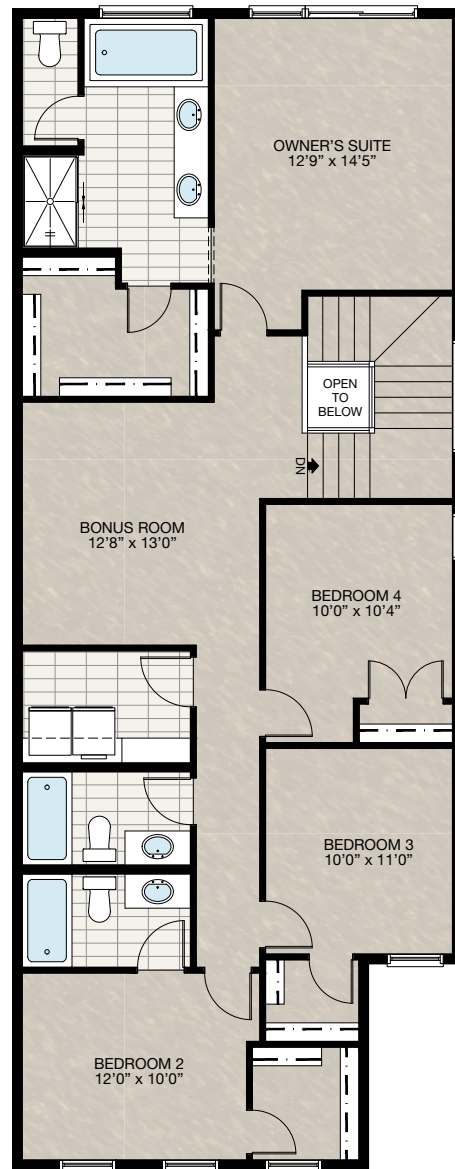
Trico Homes™
The Heart of Homebuilding®

STANDARD PLAN

THE
LAWSON
2538 SQ.FT.



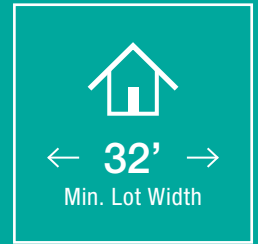
MAIN
1116 SQ.FT.



UPPER
1422 SQ.FT.

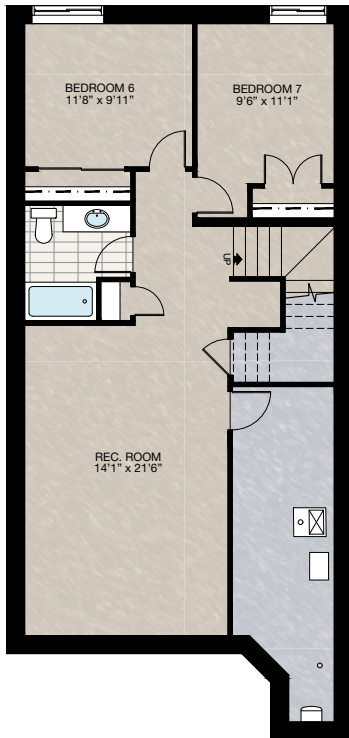


FEATURED OPTIONS



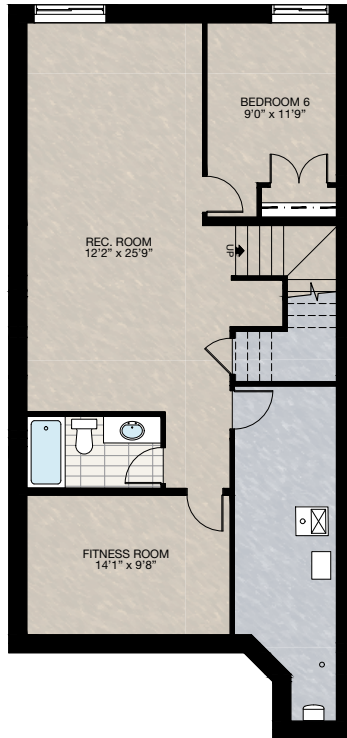
SELECT-1 BASEMENT DEVELOPMENT OPTION 1

- 782 sq.ft. Developed area
- Includes finished basement stairwell
- Add 1 riser to stairwell for 9'0" basement ceiling (8'9" headroom clearance)
- Upgrade 60" x 24" DHSL window to 60" x 36" DHSL
- Add 48" x 36" DHSL window



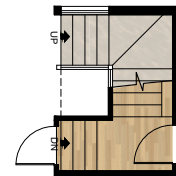
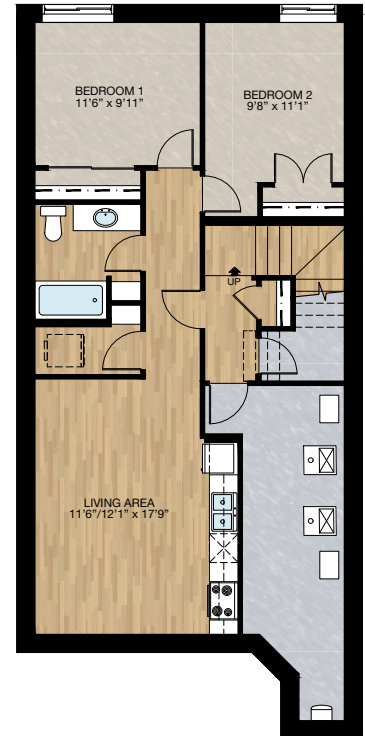
SELECT-2 BASEMENT DEVELOPMENT OPTION 2

- 782 sq.ft. Developed area
- Includes finished basement stairwell
- Add 1 riser to stairwell for 9'0" basement ceiling (8'9" headroom clearance)
- Upgrade 60" x 24" DHSL window to 60" x 36" DHSL
- Add 48" x 36" DHSL window



SELECT-3 SECONDARY SUITE OPTION 1

- * Not available for short side zero due to side entrance
- ** Subject to grading max. 1 riser permitted, no steps can be added to exterior side entrance
- 768 sq.ft. Developed area
- Includes finished basement stairwell
- Add 1 riser to stairwell for 9'0" basement ceiling (8'9" headroom clearance)
- Upgrade 60" x 24" DHSL window to 60" x 36" DHSL
- Add 48" x 36" DHSL window



MAIN FLOOR STAIR FOR
SECONDARY SUITE OPTION 1

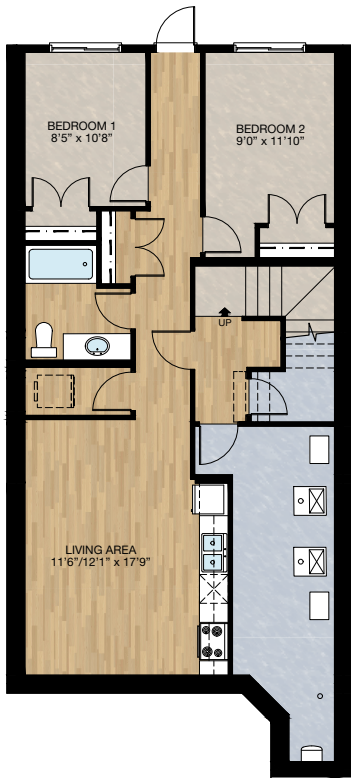


NOTES

THE
LAWSON
2538 SQ.FT.

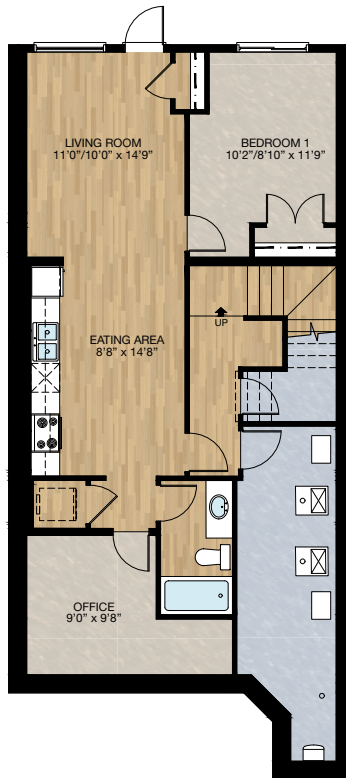
SELECT-4 WALK-OUT SECONDARY SUITE OPTION 1

- ** ONLY AVAILABLE ON WALK-OUT LOT
- 783 sq.ft. Developed area
- Includes finished basement stairwell
- Add 1 riser to stairwell for 9'0" basement ceiling (8'9" headroom clearance)
- Upgrade 60" x 60" window to 60" x 36" HSL



SELECT-5 WALK-OUT SECONDARY SUITE OPTION 2

- ** ONLY AVAILABLE ON WALK-OUT LOT
- 792 sq.ft. Developed area
- Includes finished basement stairwell
- Add 1 riser to stairwell for 9'0" basement ceiling (8'9" headroom clearance)



Trico Homes is a local home builder, with new single and multi-family homes for sale in Calgary, Okotoks, Chestermere, Cochrane, Airdrie and DeWinton. Offering a great selection of starter, move-up, semi-estate and ultra-estate models in numerous communities, you'll find the house that's just right for you! Look for this model and many others in Ambleton, Belmont, Brawn Landing, Carrington, Chelsea, Chelsea Court Townhomes, Colours of Seton Townhomes, Cornerbrook, D'Arcy, Creek View, Dawson's Landing, Glacier Ridge, Hamilton Heights, Harmony, Homestead, Huxley, Legacy, Midtown, Pine Creek, Precedence, Rivercrest, Seton, Sirocco, Southbow Landing, Verona West Townhomes, West Springs, West83 Townhomes and Wolf Willow.



Renderings are artist's conceptions only and may vary by community and lot selection. Prices, floorplans, specifications and dimensions are approximate and are subject to change without notice. E.&O.E. © All rights reserved, including the right if reproduction in the whole or in part without the permission of Trico Homes.

Plan updated as of September 3, 2024.



tricohomes.com