

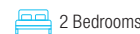


SPRING 2025 POSSESSION



THE REGENT 1344 SQ.FT.

113 - 285 Chelsea Court



2 Bedrooms



3 1/2 Bathrooms



Single Garage

OPTIONS INCLUDED IN THIS HOME ARE:

- Moonlight colour palette
- Entry level flexroom with full bathroom
- Open concept main floor
- Upgraded semi-built-in kitchen with appliances
- Upgraded flush mounted LED lights in great room
- Zebra blinds
- Main floor balcony
- Dual bedrooms with separate ensuites & walk-in closets
- 4-Piece owner's ensuite
- Stacked washer & dryer on upper floor
- A/C rough-ins
- Gas line to deck

COME VISIT OUR SHOWHOME

259 Chelsea Road, Chestermere, AB
Call Sam Bibanco today at 587.496.8192 or
email at chelseacourt@tricohomes.com



SHOWHOME HOURS:

Mon - Thurs: 2pm - 8pm

Fri: Closed

Sat - Sun: 12pm - 5pm

PLUS RECEIVE YOUR OWN TRICO RED CARD



& ENJOY INCREDIBLE
ONGOING SAVINGS &
REWARDS FROM OUR
PARTNERS & RETAILERS



Chelsea Court

TOWNHOMES

Trico Homes™

The Heart of Homebuilding®



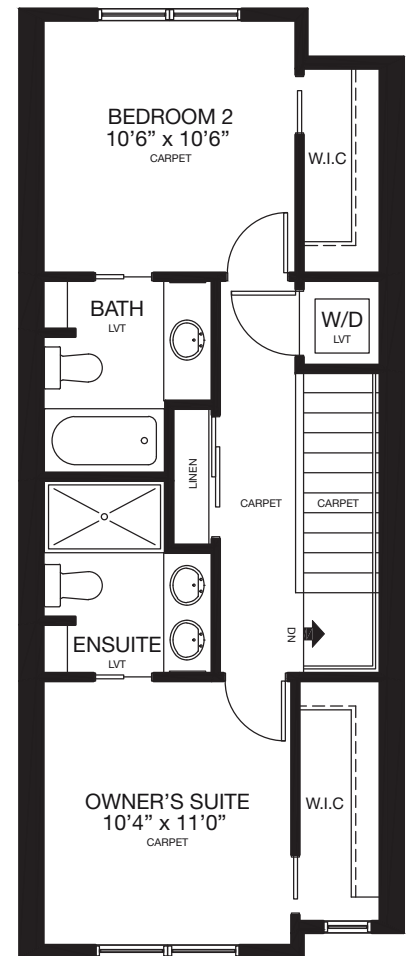
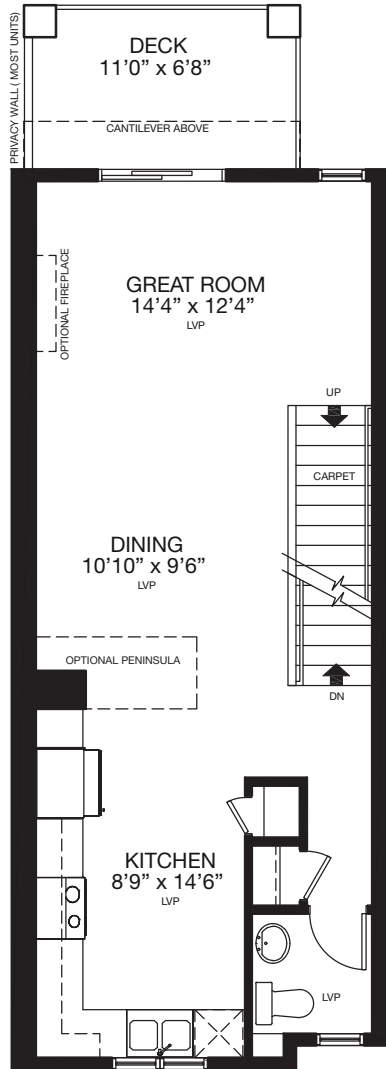
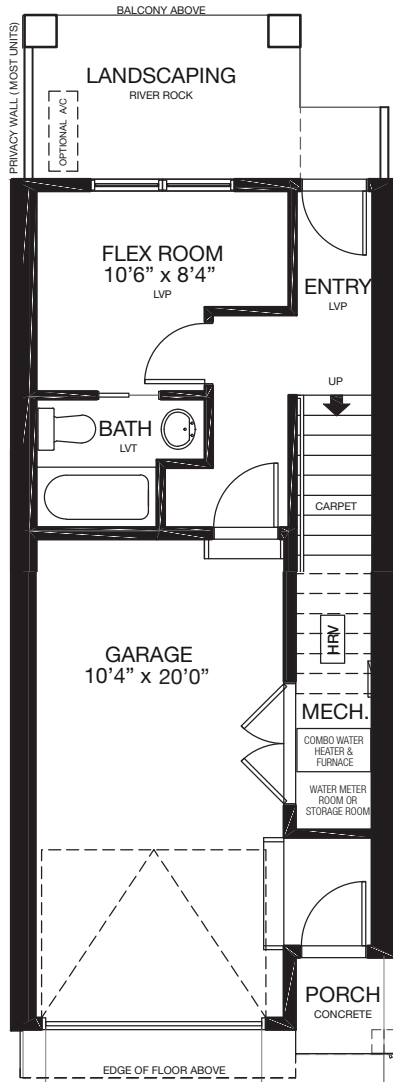
tricohomes.com



THE REGENT

1344 SQ.FT.

113 - 285 Chelsea Court



Renderings are artist's conceptions only and may vary by community and lot selection. Prices, floorplans, specifications and dimensions are approximate and are subject to change without notice. E.&O.E. © All rights reserved, including the right if reproduction in the whole or in part without the permission of Trico Homes.

Plan updated November 19, 2024



trichomes.com