
 3 Bedrooms

 2½ Bathrooms

THE RAEYA

1802 SQ.FT.

☐ Elements Specification

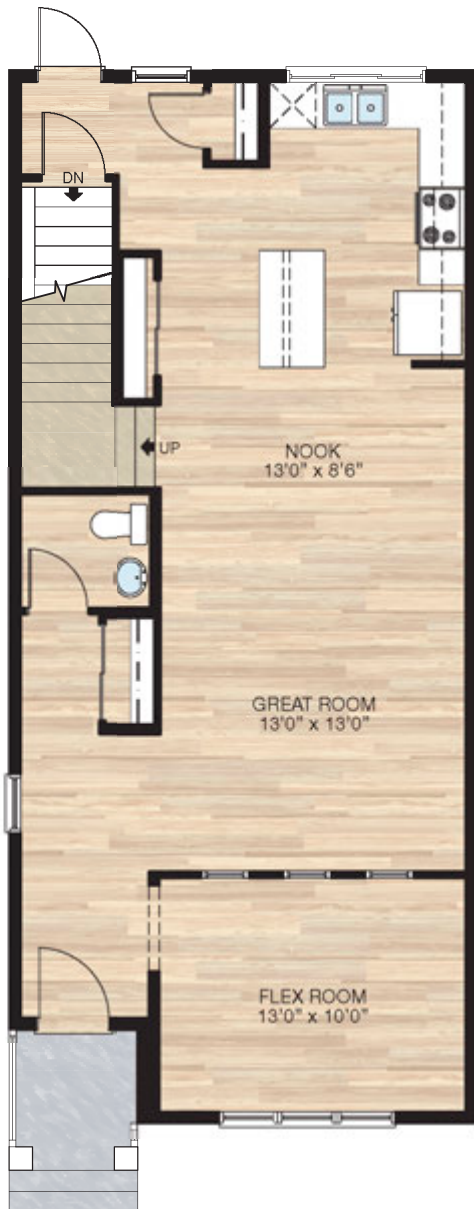
☐ Elite Specification



Trico Homes™
The Heart of Homebuilding®

STANDARD PLAN

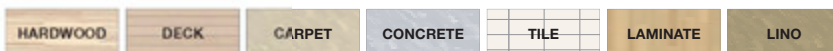
THE
RAEYA
1802 SQ.FT.



MAIN
878 SQ.FT.



UPPER
924 SQ.FT.



FEATURED OPTIONS



SELECT-1

4 BEDROOM UPPER FLOOR OPTION

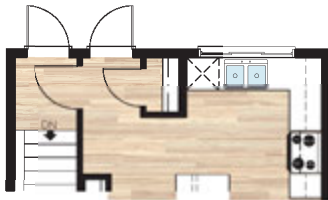
- Delete bonus room & add fourth bedroom
- Delete 72" x 20" window, add 48" x 48" window
- This reduces the depth of the master walk-in closet
- Add one light to the hallway on existing switch



SELECT-2

REAR BASEMENT ENTRANCE OPTION

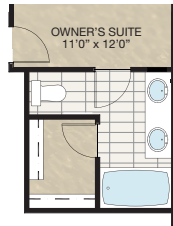
- Delete 30" x 72" window
- Add standard 2'8" exterior door
- Move basement door
- Add light to rear landing (using existing switch)
- Add exterior light & switch



SELECT-3

ALTERNATE ENSUITE OPTION

- Add 24" of vanity & second sink
- Add 2 lights to existing switch



SELECT-4

MAIN FLOOR FULL BATH OPTION

- Add standard tub/shower unit to half bath
- Delete 4'0" bypass door & replace with 2'4" swing door
- Flex room becomes bedroom with two 2'0" swing doors & closet
- Delete three 24" x 24" interior windows
- Re-center entry window with great room opening
- Extend beam in front entry 3'0"



SELECT-4A

MAIN FLOOR FULL BATH OPTION 2

- Additional 9 sq.ft. to main floor
- Add 5'0" cantilever closet with 2'6" door
- Delete 4'0" bypass door & closet
- Add standard tub/shower unit
- Add 4'0" vanity
- Flex room becomes bedroom with two 2'0" swing door & closet
- Delete three 24" x 24" interior windows
- Re-center entry window between wall space



HARDWOOD

DECK

CARPET

CONCRETE

TILE

LAMINATE

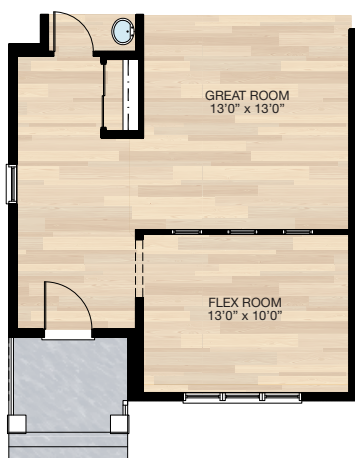
LINO

FEATURED RAEYA OPTIONS

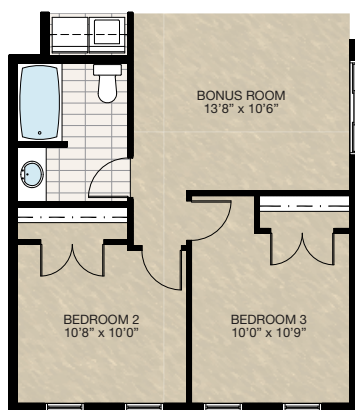


SELECT-8 WIDER ENTRY OPTION

- Widen entry & upper floor 2'
- Adds 37 sq.ft. to main floor
- Adds 45 sq.ft. to upper floor
- Redesign main bath



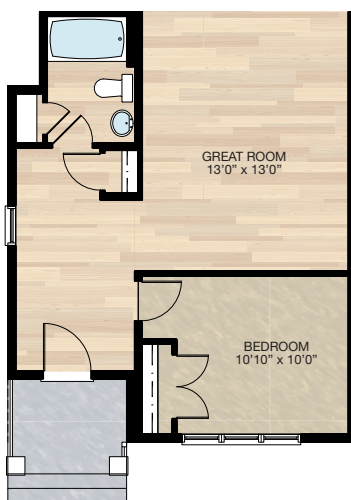
Main Floor



Upper Floor

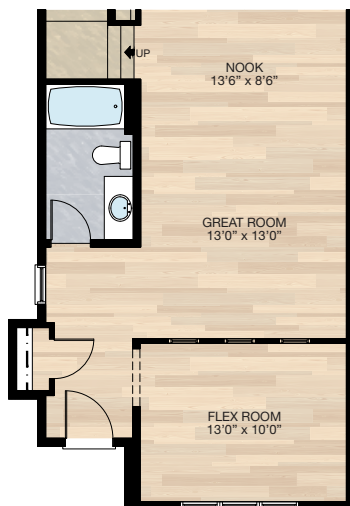
SELECT-8 COMBINED WITH SELECT-4

- Add linen closet to full bath



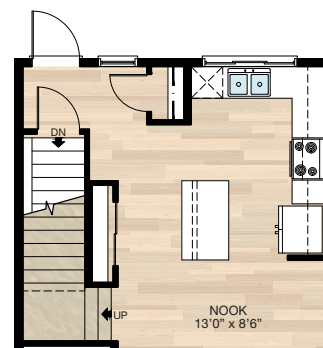
SELECT-10 MAIN BATH & FLEX ROOM OPTION

- Additional 9 sq.ft. to main floor for entry closet cantilever
- Delete half bath
- Add 3-piece bath with 48" vanity



SELECT-9 KITCHEN ISLAND OPTION

- Change island eating bar from 12" to 8" deep
- Additional depth to island cabinet base from 18" to 24"



HARDWOOD

DECK

CARPET

CONCRETE

TILE

LAMINATE

LINO

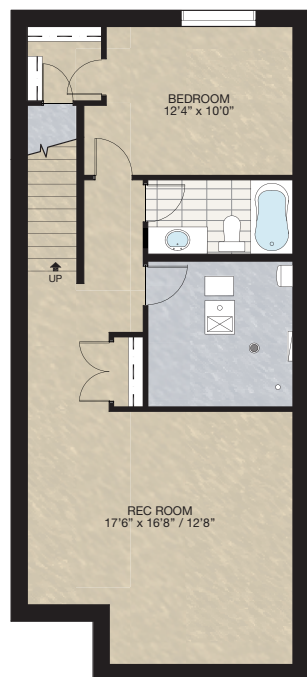
tricohomes.com

FEATURED OPTIONS

THE
RAEYA
1802 SQ.FT.

SELECT-5 BASEMENT DEVELOPMENT OPTION

- 648 Sq.Ft. basement development
- Included finished basement stairwell
- Delete 2'8" passage door top of stairwell
- Add one riser to stairwell for 9'0" basement ceiling (8'9" headroom clearance)
- Reduce length of bearing wall & strip footing & add dropped beam
- 60" x 24" Window changed to 60" x 36"



SELECT-6 ALTERNATE KITCHEN OPTION

- Delete rear closet
- Add 2" x 6" mech wall by stairs
- Extend lower cabinets 2'4"
- Extend island 18"
- Re-centre window, sink, dishwasher & lights



SELECT-7 DELETE FLEX ROOM OPTION

- Delete front flex room
- Additional 3'9½" of upper & lower cabinets
- Extend island 20"
- Adjust nook and great room sizes, flooring & lighting locations



Trico Homes is a local home builder, with new single and multi-family homes for sale in Calgary, Okotoks, Chestermere, Cochrane, Airdrie and DeWinton. Offering a great selection of starter, move-up, semi-estate and ultra-estate models in numerous communities, you'll find the house that's just right for you! Look for this model and many others in Ambleton, Arbour Lake, Belmont, Carrington, Chelsea, Cornerbrook, D'Arcy, Dawson's Landing, Glacier Ridge, Hamilton Heights, Homestead, Legacy, Midtown, Pine Creek, Precedence, Rivercrest, Seton, Sirocco, Verona West Townhomes, West83 Townhomes and Wolf Willow.



Renderings are artist's conceptions only and may vary by community and lot selection. Prices, floorplans, specifications and dimensions are approximate and are subject to change without notice. E.&O.E. © All rights reserved, including the right if reproduction in the whole or in part without the permission of Trico Homes.

Plan updated as of April 13, 2023.



tricohomes.com