
 3 Bedrooms

 2½ Bathrooms

 Double Garage

THE ARIA ZLL

2229 SQ.FT.

☐ Elements Specification

☐ Elite Specification

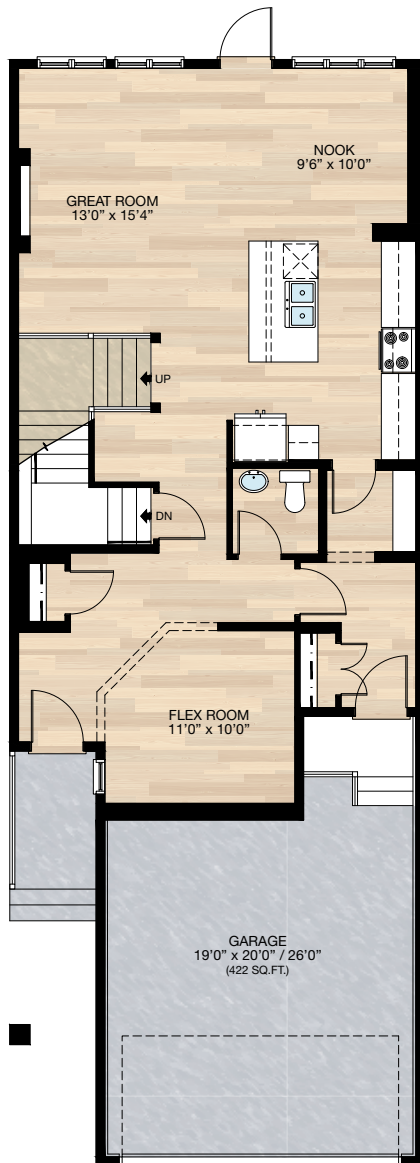
☐ Elite Plus Specification



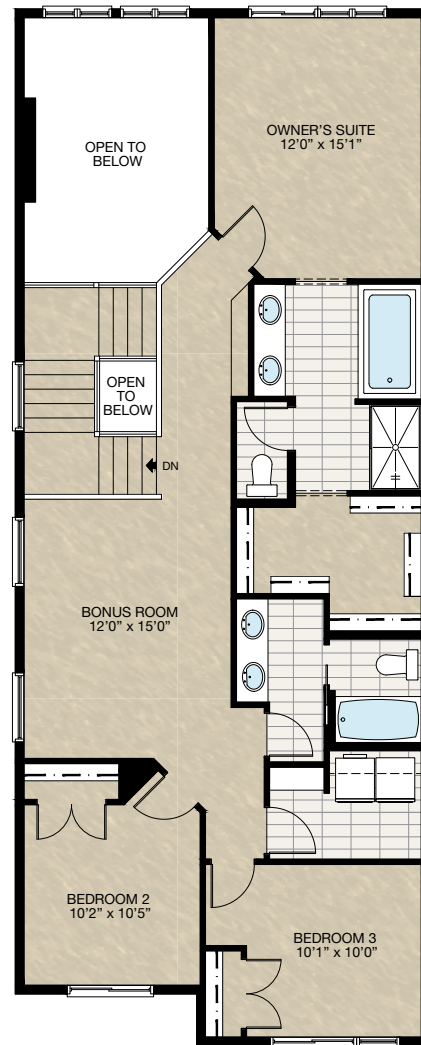
Trico Homes™
The Heart of Homebuilding®

STANDARD PLAN

THE
ARIA ZLL
2229 SQ.FT.



MAIN
994 SQ.FT.



UPPER
1235 SQ.FT.

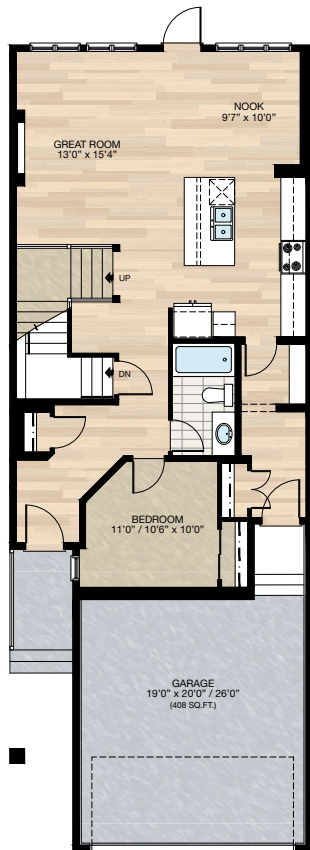


FEATURED OPTIONS



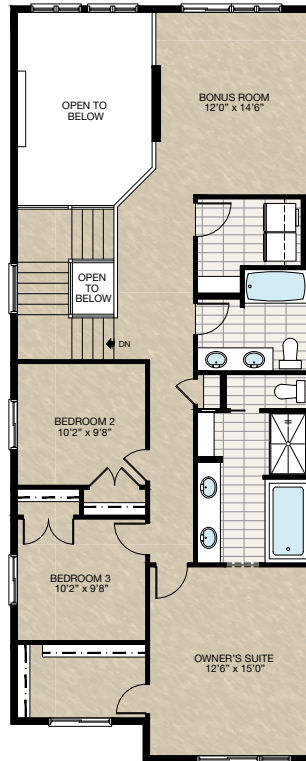
☐ **SELECT-1** MAIN FLOOR BEDROOM WITH 3-PIECE BATHROOM OPTION

- Add 14 Sq.Ft to main floor



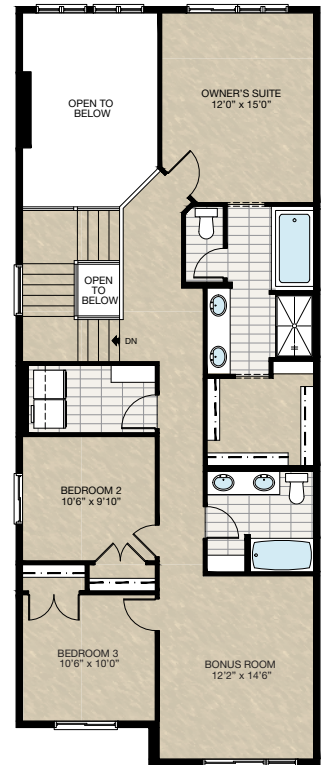
☐ **SELECT-2** REAR BONUS ROOM OPTION

- Must be long side zero
- Redesign upper floor
- Additional 18" vanity to owner's ensuite
- Delete two 48" x 24" P window to side elevation
- Add two 48" x 40" HSL windows to bedroom 2 & 3



☐ **SELECT-3** FRONT BONUS ROOM OPTION

- Must be long side zero
- Redesign upper floor
- Additional 10" vanity to owner's ensuite
- Delete two 48" x 24" P window to side elevation
- Add 48" x 40" HSL window to bedroom 2



HARDWOOD

DECK

CARPET

CONCRETE

TILE

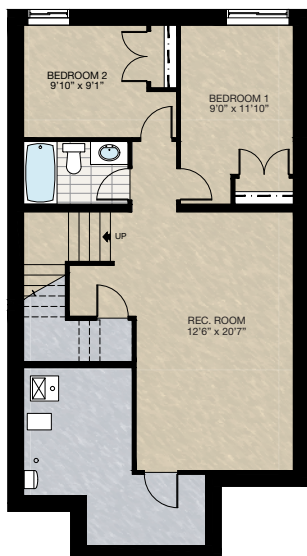
LVP

FEATURED ARIA ZLL OPTIONS



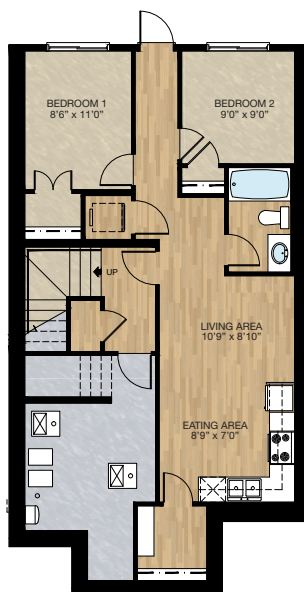
☐ **SELECT-7 BASEMENT DEVELOPMENT OPTION**

- 665 Sq.Ft. Developed area
- Included finished basement stairwell
- Move 2'8" passage door from top of stairwell to mech. room
- Add 1 riser to stairwell for 9'0" basement ceiling (8'9" headroom clearance)



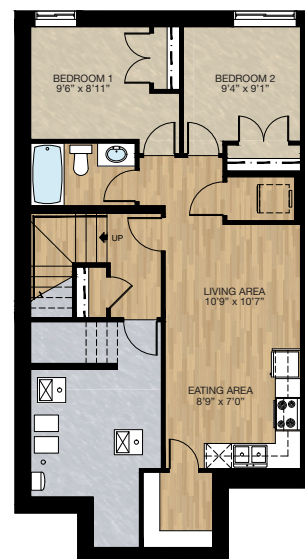
☐ **WALKOUT SECONDARY SUITE OPTION**

- Must be long side zero
- 703 Sq.Ft. developed area
- Included finished basement stairwell
- Add 1 riser to stairwell for 9'0" basement ceiling (8'9" headroom clearance)
- Add 2" x 8" mech. wall at front entry side wall
- Includes washer & dryer rough-in only



☐ **WALKOUT SECONDARY SUITE OPTION**

- Must be long side zero
- 688 Sq.Ft. developed area
- Included finished basement stairwell
- Add 2'8" exterior door for side entrance & exterior light at stairwell
- Upgrade stairwell switches to 4-way
- Add 1 riser to stairwell for 9'0" basement ceiling (8'9" headroom clearance)
- Add 40" x 40" HSL window to bedroom 1
- Add 2" x 8" mech. wall at front entry side wall
- Includes washer & dryer rough-in only

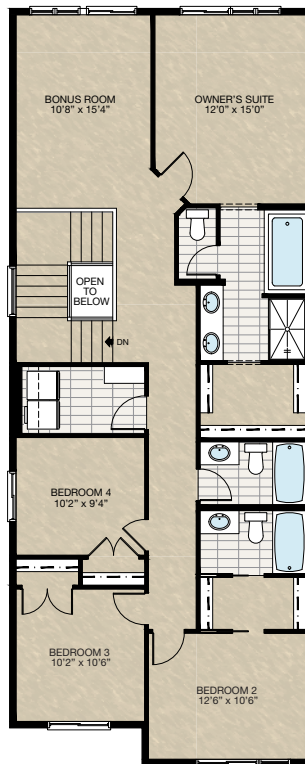


FEATURED OPTIONS

THE
ARIA ZLL
2229 SQ.FT.

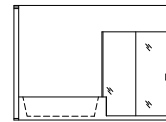
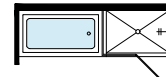
SELECT-4 UPPER FLOOR 4 BEDROOMS WITH 3 BATHROOMS OPTION

- Must be long side zero
- Redesign upper floor
- Additional 160 Sq.Ft. to upper floor
- Delete two 48" x 24" P windows to side elevation
- Add 48" x 40" HSL window to bedroom #4
- Add two 2" x 4" mech. wall in lieu of railing at main floor stairwell adjacent to great room
- Great room reduced 4" due to two 2" x 4" mech. wall added
- Upgrade one of the bonus room to 48" x 72" HSL/PP



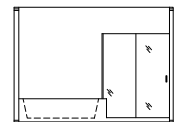
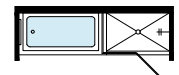
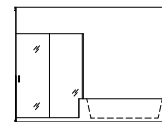
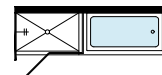
SELECT-5 ENSUITE OPTION FOR STANDARD UPPER FLOOR ONLY

- Delete 60" x 36" acrylic shower & 6mm sliding door
- Delete wall between tub & shower
- Add 60" x 44" fully tiled shower with 10mm glass
- Extended tub deck to shower



SELECT-6 ENSUITE OPTION FOR UPPER FLOOR OPTIONS

- Delete 60" x 36" acrylic shower & 6mm sliding door
- Delete wall between tub & shower
- Add 60" x 44" fully tiled shower with 10mm glass
- Extended tub deck to shower



Trico Homes is a local home builder, with new single and multi-family homes for sale in Calgary, Okotoks, Chestermere, Cochrane, Airdrie, DeWinton & Springbank. Offering a great selection of starter, move-up, semi-estate, estate and ultra-estate models in numerous communities, you'll find the house that's just right for you! Look for this model and many others in Ambleton, Belmont, Bridgeport, Carrington, Chelsea, Chelsea Court Townhomes, Colours of Seton Townhomes, Cornerbrook, Damkar Court, D'Arcy, Creek View, Dawson's Landing, Glacier Ridge, Hamilton Heights, Harmony, Heartwood, Homestead, Huxley, Legacy, Midtown, Pine Creek, Rivercrest, Seton, Sirocco, Southbow Landing, Stillwater Estates, Verona North Townhomes, Wentworth Landing, West Springs, West83 Townhomes and Wolf Willow.



Renderings are artist's conceptions only and may vary by community and lot selection. Prices, floorplans, specifications and dimensions are approximate and are subject to change without notice. E.&O.E. © All rights reserved, including the right if reproduction in the whole or in part without the permission of Trico Homes.

Plan updated as of April 1, 2025.



tricohomes.com