

EXCLUSIVE & RARE  
ONLY  
18  
DE WINTON, ALBERTA

 HAMILTON  
HEIGHTS



# The Woodside

2240 SQ.FT.

2 BEDROOMS | 2.5 BATHS | 3 CAR GARAGE

A Signature Home Collection exclusively by



# Main Floor




2240 Sq.Ft.

THE  
WOODSIDE  
2240 SQ.FT.



# Optional Basement

## 1854 Sq.Ft.

-  2 Bedrooms
-  2½ Bathrooms
-  3 Car Garage

**SELECT-10**  
**BASEMENT DEVELOPMENT OPTION**

- 1854 sq.ft. developed area
- Add 1 riser to stairwell for 9'0" basement ceiling (8'9" headroom clearance)



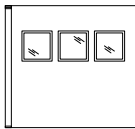
# Featured Options

THE  
WOODSIDE  
2240 SQ.FT.

**SELECT-6**  
**FLEX ROOM WITH GLASS INSERTS & DOOR OPTION**

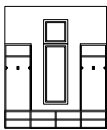


Plan View



Elevation View

**SELECT-7**  
**MUDROOM LOCKERS OPTION**



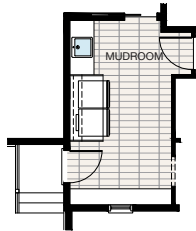
Front Elevation View



Side Elevation View

**SELECT-8**  
**LAUNDRY ROOM OPTION**

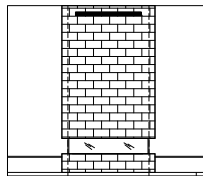
- Add laminate counter with gables over washer & dryer with wash control knobs
- Add upper cabinet above washer & dryer with hanging rod
- Add 4'6" lower cabinet with sink



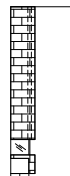
**SELECT-9**  
**GREAT ROOM 3 SIDED BAY FIREPLACE OPTION**



Plan View



Front Elevation View



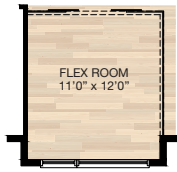
Side Elevation View



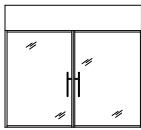
# Featured Options

THE  
WOODSIDE  
2240 SQ.FT.

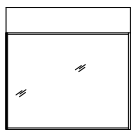
**SELECT-1**  
FLEX ROOM GLASS WALL  
& DOORS OPTION



Plan View



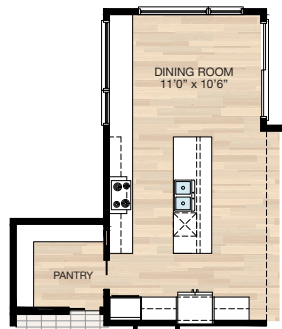
Front Elevation View



Side Elevation View

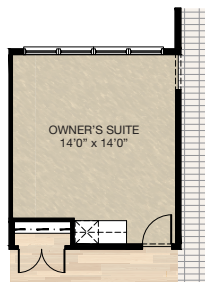
**SELECT-2**  
KITCHEN OPTION

- Additional 10'6" lower cabinetry to kitchen



**SELECT-4**  
OWNER'S SUITE COFFEE BAR OPTION

- Add light switch & downlight for coffee bar



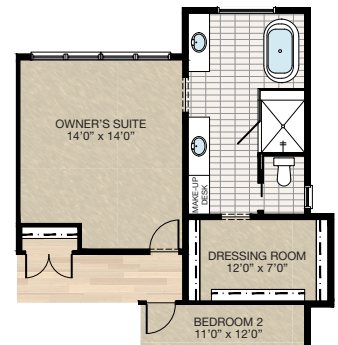
Plan View



Elevation View

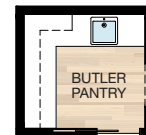
**SELECT-3**  
ENSUITE OPTION

- Additional 16 sq.ft.
- Cantilever closet to side
- Tiled shower from 42" x 96" to 48" x 66"
- Delete 8'o" dual vanity
- Add two separate vanity with make-up desk



**SELECT-5**  
BUTLER PANTRY OPTION

- Delete 2'8" pocket door between pantry & kitchen
- Added one downlight



Trico Homes is a local home builder, with new single and multi-family homes for sale in Calgary, DeWinton, Okotoks, Chestermere, Cochrane, and Airdrie. Offering a great selection of starter, move-up, semi-estate and estate models in numerous communities, you'll find the house that's just right for you! Look for this model and many others in Ambleton, Arbour Lake, Belmont, Carrington, Chelsea, CoachRidge, Cornerbrook, D'Arcy, Dawson's Landing, Hamilton Heights, Heritage Hills, Homestead, Legacy, Midtown, PineCreek, Precedence, Rivercrest, Seton, Sirocco, Verona West Townhomes, West83 Townhomes and Wolf Willow.

Renderings are artist's conceptions only and may vary by community and lot selection. Prices, floorplans, specifications and dimensions are approximate and are subject to change without notice. E.&O.E. © All rights reserved, including the right if reproduction in the whole or in part without the permission of Trico Homes. Revision: Sept 11, 2023.



Learn more at [tricohomes.com](https://tricohomes.com)

