

# Chelsea Court

TOWNHOMES

**NOBLE**

**1203 SQ.FT.**

Type A4 End Unit 3 – 15'

3 Bedrooms  
2.5 Baths  
Tandem Garage

259 Chelsea Road  
Chestermere, AB

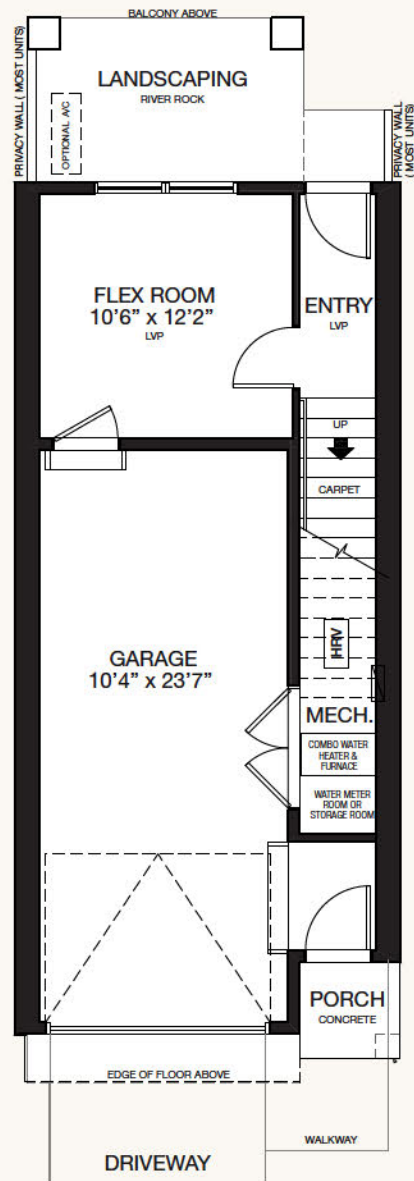
587.496.8192  
ChelseaCourt@TricoHomes.com

ChelseaCourtTownhomes.ca

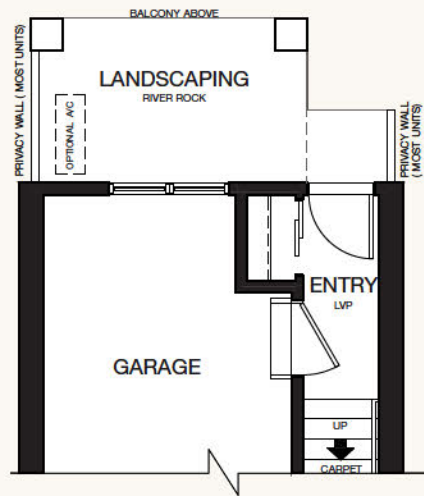


\* Floorplans & renderings are artist's concept only and may be subject to change without notice. Builder reserves the right to make modifications and changes to building design, specifications, features and floorplans without notice. Measurements and areas shown are based on pre-construction estimates and are approximate only. E.&O.E. Windows locations and sizes on these renderings are dependent on building location and elevation as approved by the City of Chestermere, confirm with your sales representative exact locations.

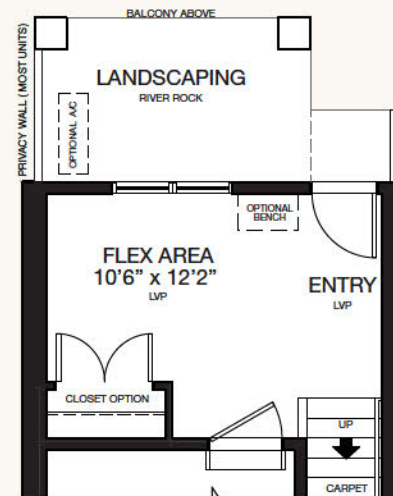
# OPTIONS



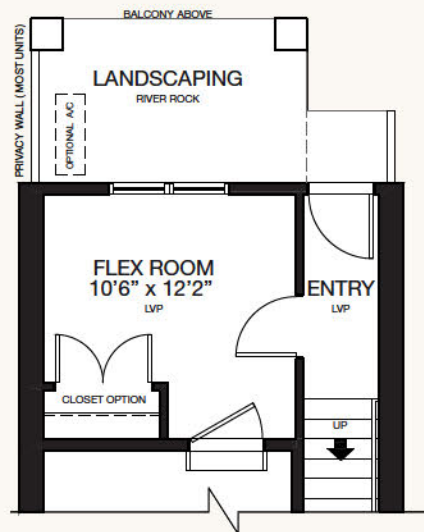
**FLEX ROOM OPTION**  
160 SQ.FT.



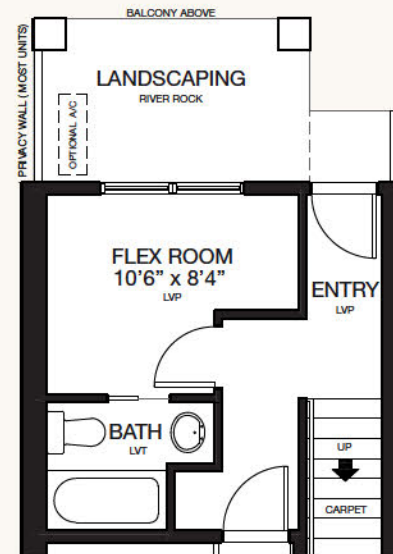
**ENTRY LEVEL CLOSET OPTION**  
48 SQ.FT.



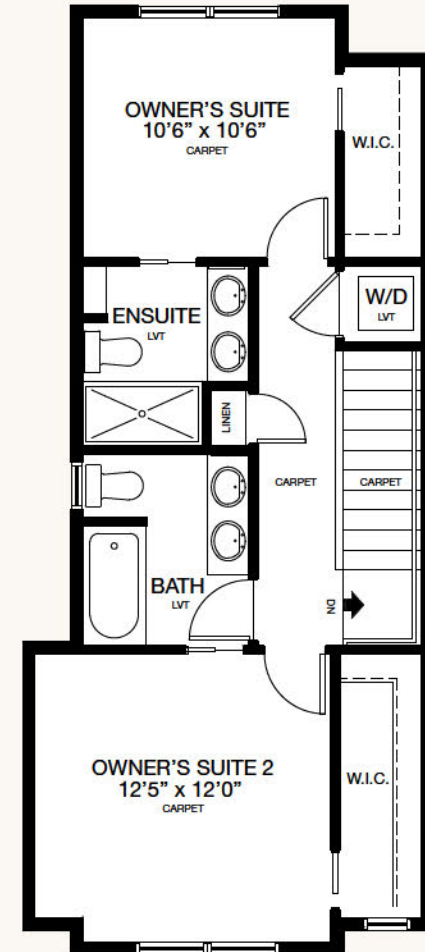
**ENTRY LEVEL OPEN FLEX ROOM OPTION**  
160 SQ.FT.



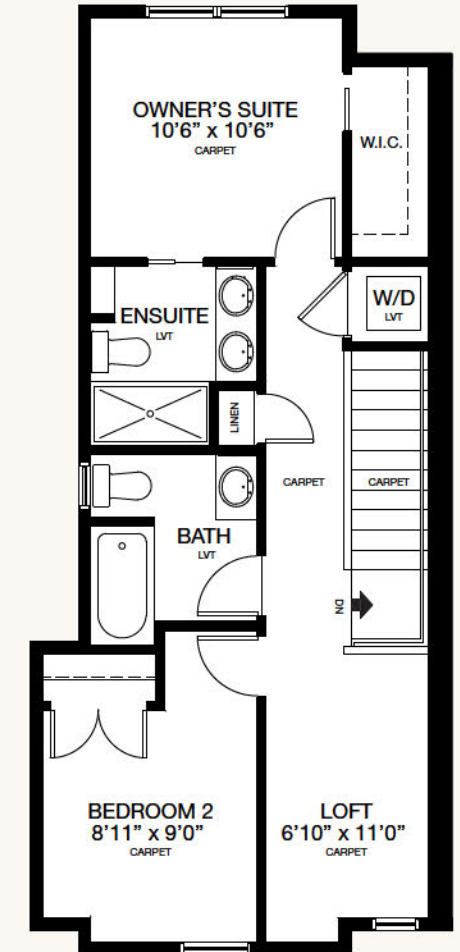
**ENTRY LEVEL FLEX ROOM OPTION II**  
160 SQ.FT.



**ENTRY LEVEL FULL BATH OPTION**  
203 SQ.FT.



**UPPER FLOOR OPTION I**  
606 SQ.FT.



**UPPER FLOOR OPTION II**  
606 SQ.FT.

\* Floorplans & renderings are artist's concept only and may be subject to change without notice. Builder reserves the right to make modifications and changes to building design, specifications, features and floorplans without notice. Measurements and areas shown are based on pre-construction estimates and are approximate only. E.&O.E. Windows locations and sizes on these renderings are dependent on building location and elevation as approved by the City of Chestermere, confirm with your sales representative exact locations.