


← 24' →
Min. Lot Width

 3 Bedrooms

 2½ Bathrooms

THE
JAMIESON DUPLEX
1672 SQ.FT.

Elements Specification

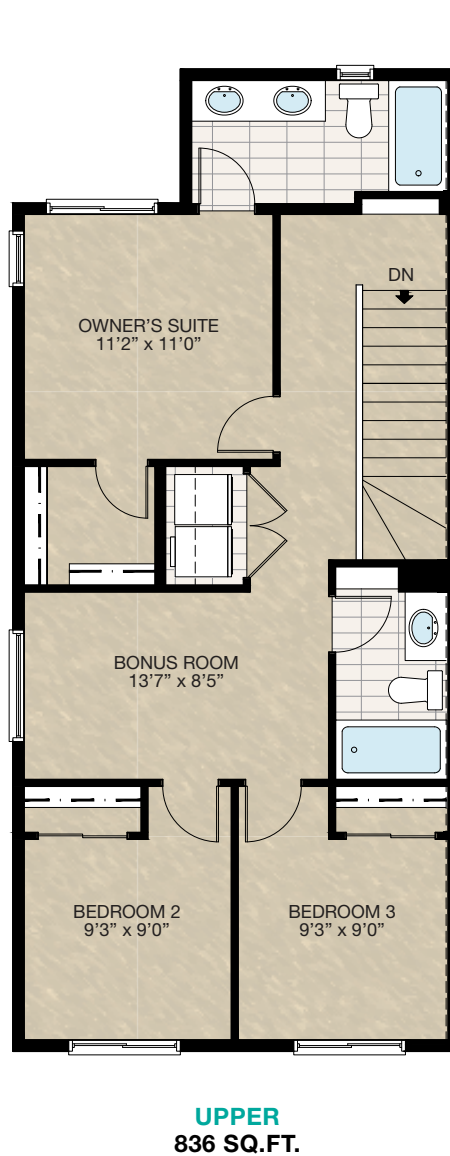
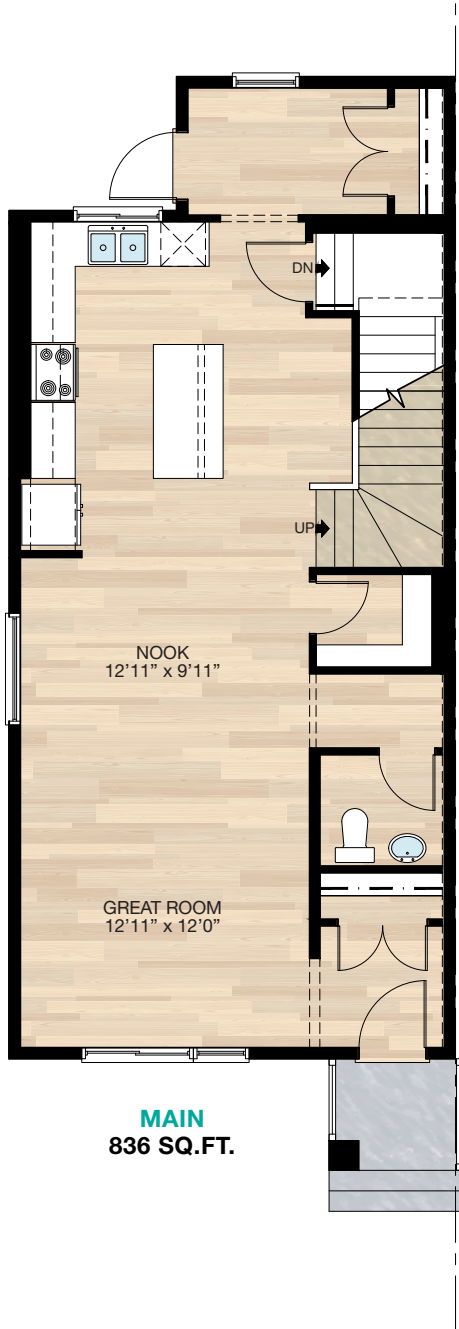
Elite Specification



Trico Homes™
The Heart of Homebuilding®

STANDARD PLAN

THE
JAMIESON
DUPLEX
1672 SQ.FT.

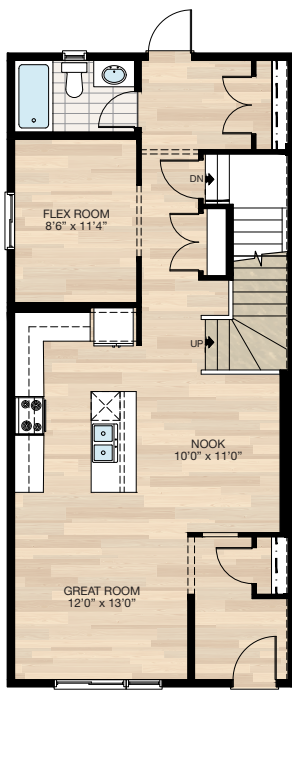


FEATURED OPTIONS



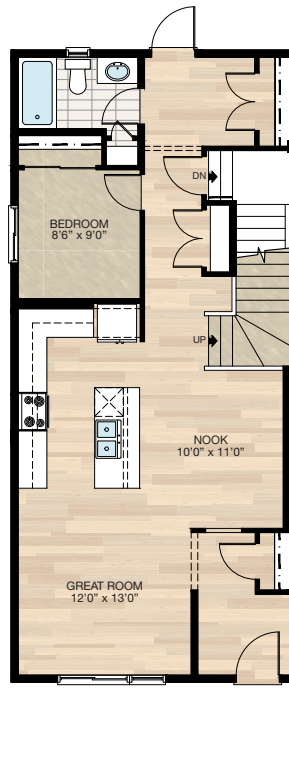
SELECT-1 MAIN FLOOR FLEX ROOM WITH BATH OPTION

- Additional 45 sq.ft. to main floor
- Redesigned main floor to accommodate flex room & full bath
- Delete rear window 36" x 72" P
- Delete 60" x 24" P window on the side
- Relocate rear window 48" x 48" HSL to flex room
- Add 20" x 40" P window to bathroom



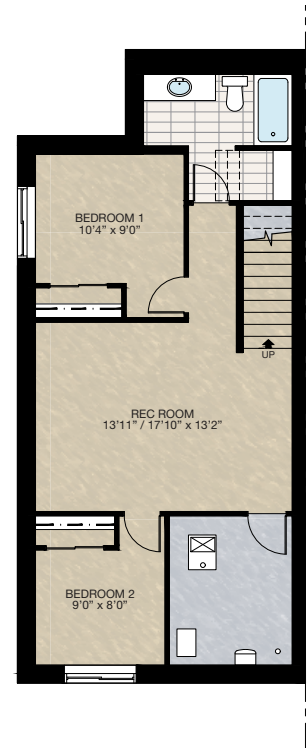
SELECT-2 MAIN FLOOR BEDROOM WITH BATH OPTION

- Additional 45 sq.ft. to main floor
- Redesigned main floor to accommodate bedroom & full bath
- Delete rear window 36" x 72" P
- Delete 60" x 24" P window on the side
- Relocate rear window 48" x 48" HSL to bedroom
- Add 20" x 40" P window to bathroom



SELECT-3 BASEMENT DEVELOPMENT OPTION

- 626 Sq.Ft. basement development
 - Included finished basement stairwell
 - Add 1 riser to stairwell for 9'0" basement ceiling (8'9" headroom clearance)
 - Add 60" x 36" HSL window to bedroom 2
 - Upgrade side window from 60" x 24" DBSL to 60" x 36" DBSL
- * MUST be combined with standard main floor plan



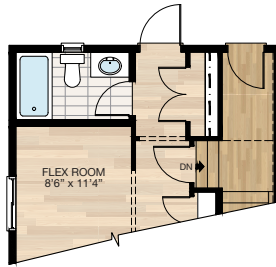
FEATURED JAMIESON OPTIONS



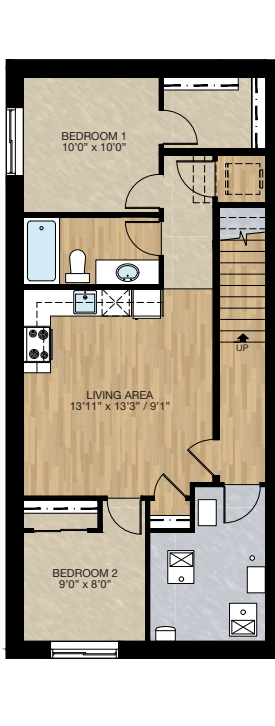
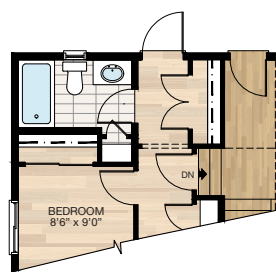
□ SECONDARY SUITE OPTION 2

- 673 Sq.Ft. basement development
 - Included finished basement stairwell
 - Add 1 riser to stairwell for 9'0" basement ceiling (8'9" headroom clearance)
 - Add 60" x 36" HSL window to bedroom 2
 - Upgrade side window from 60" x 24" DBSL to 60" x 36" DBSL
 - Include washer & dryer rough-in only
 - Second furnace & HRV added to accommodate secondary suite
 - Include rear entrance to basement suite with switch & exterior light
- * MUST be combined with **SELECT-1** or **SELECT-2** main floor option

SELECT-1 MAIN FLOOR REVISION FOR SECONDARY SUITE OPTION 2



SELECT-2 MAIN FLOOR REVISION FOR SECONDARY SUITE OPTION 2

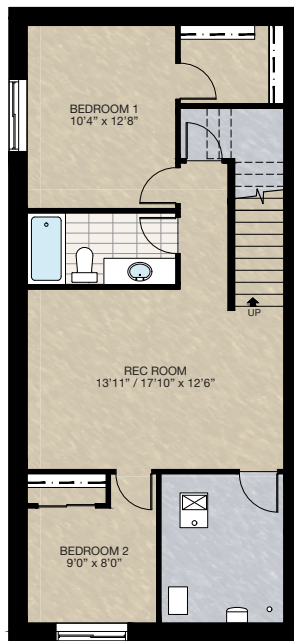


FEATURED OPTIONS

THE
**JAMIESON
DUPLEX**
1672 SQ.FT.

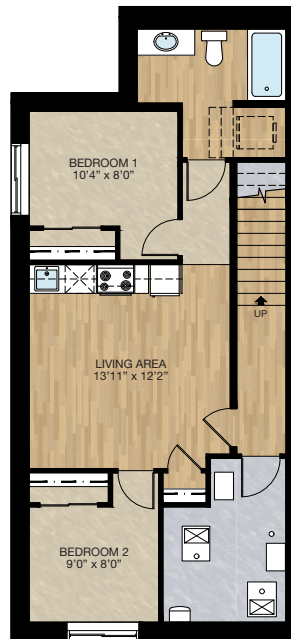
SELECT-4 BASEMENT DEVELOPMENT OPTION

- 642 Sq.Ft. basement development
- Included finished basement stairwell
- Add 1 riser to stairwell for 9'0" basement ceiling (8'9" headroom clearance)
- Add 60" x 36" HSL window to bedroom 2
- Upgrade side window from 60" x 24" DBSL to 60" x 36" DBSL
- * MUST be combined with **SELECT-1** or **SELECT-2** main floor option

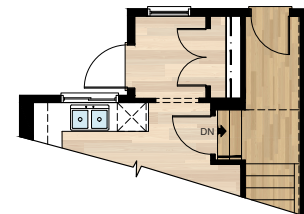


SECONDARY SUITE OPTION 1

- 628 Sq.Ft. basement development
- Included finished basement stairwell
- Add 1 riser to stairwell for 9'0" basement ceiling (8'9" headroom clearance)
- Add 60" x 36" HSL window to bedroom 2
- Upgrade side window from 60" x 24" DBSL to 60" x 36" DBSL
- Include washer & dryer rough-in only
- Second furnace & HRV added to accommodate secondary suite
- Include rear entrance to basement suite
- * MUST be combined with standard main floor only



MAIN FLOOR REVISION FOR SECONDARY SUITE OPTION 1



Trico Homes is a local home builder, with new single and multi-family homes for sale in Calgary, Okotoks, Chestermere, Cochrane, Airdrie and DeWinton. Offering a great selection of starter, move-up, semi-estate and ultra-estate models in numerous communities, you'll find the house that's just right for you! Look for this model and many others in Ambleton, Belmont, Brawn Landing, Carrington, Chelsea, Chelsea Court Townhomes, Colours of Seton Townhomes, Cornerbrook, D'Arcy, Creek View, Dawson's Landing, Glacier Ridge, Hamilton Heights, Harmony, Homestead, Huxley, Legacy, Midtown, Pine Creek, Precedence, Rivercrest, Seton, Sirocco, Southbow Landing, Verona West Townhomes, West Springs, West83 Townhomes and Wolf Willow.



Renderings are artist's conceptions only and may vary by community and lot selection. Prices, floorplans, specifications and dimensions are approximate and are subject to change without notice. E.&O.E. © All rights reserved, including the right if reproduction in the whole or in part without the permission of Trico Homes.

Plan updated as of March 20, 2024.



tricohomes.com