



WEST/83
TOWNHOMES
WEST SPRINGS



Oakwood

1796
SQ.FT.

- 3 Bedrooms
- 2½ Bathrooms
- Double Garage

TYPE 3 • 20' UNIT

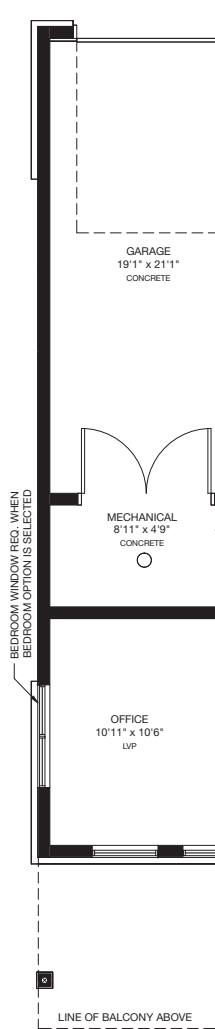


* Floorplan is an artist rendering only and may be subject to change without notice. Builder reserves the right to make modifications and changes to building design, specifications, features and floorplans without notice. Measurements and areas shown are based on pre-construction estimates and are approximate only. E.&O.E. Windows locations and sizes on these renderings are dependent on building location and elevation as approved by the City of Calgary, confirm with your sales representative exact locations. WEST83-29374 Phase 2 Blacklines (Sept 9, 2024)

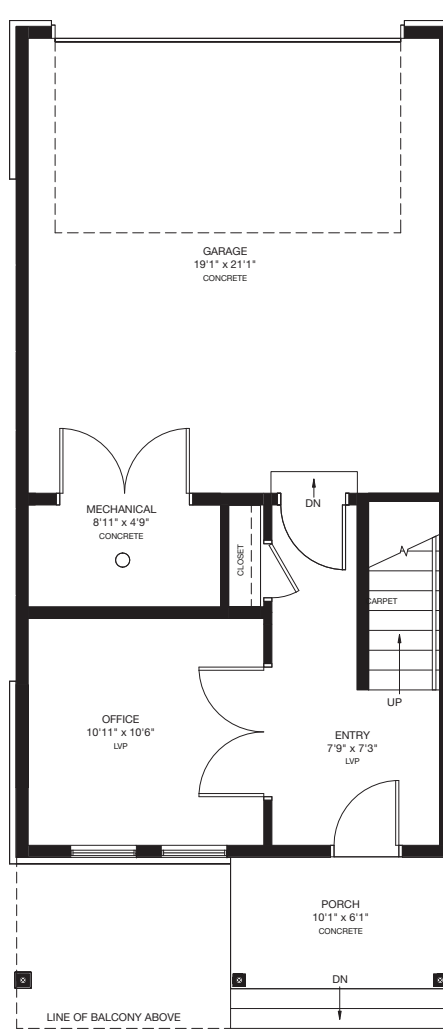


WEST/83
TOWNHOMES
WEST SPRINGS

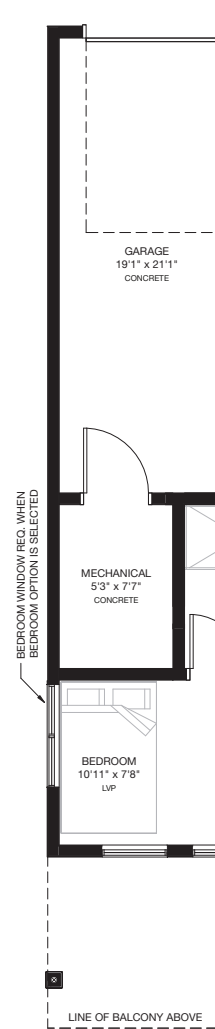
Available
**Oakwood
Options**
TYPE 3 • 20' UNIT



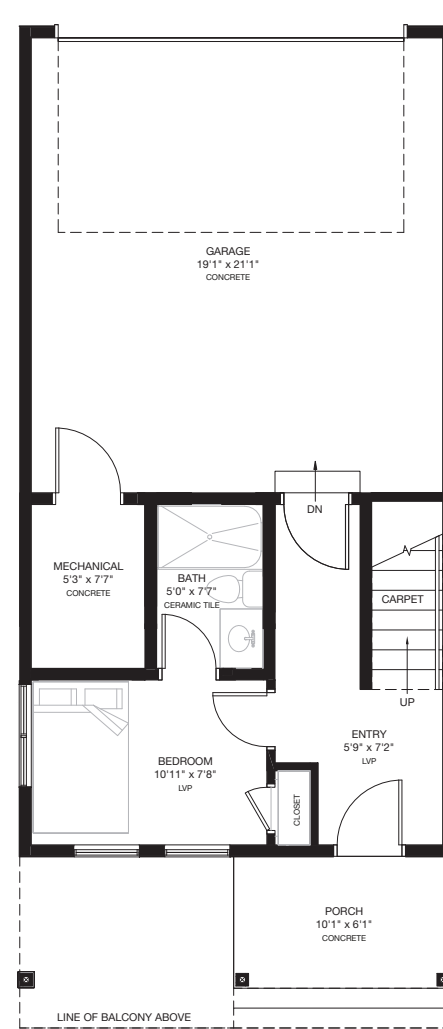
END UNIT



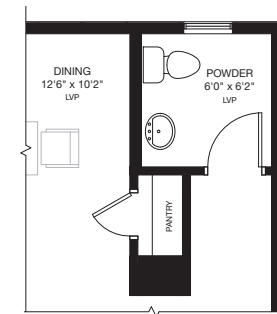
ENTRY LEVEL • OPTION 1
Area: 301 Sq.Ft.
Total Area: 1828 Sq.Ft.



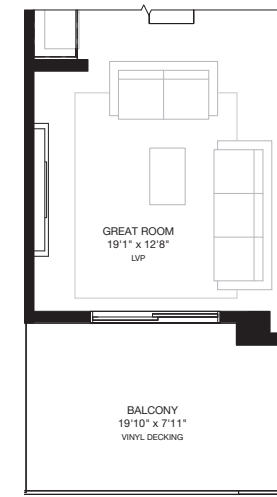
END UNIT



ENTRY LEVEL • OPTION 2
Area: 307 Sq.Ft.
Total Area: 1834 Sq.Ft.



MAIN LEVEL •
PANTRY OPTION



MAIN LEVEL •
FIREPLACE OPTION

* Floorplan is an artist rendering only and may be subject to change without notice. Builder reserves the right to make modifications and changes to building design, specifications, features and floorplans without notice. Measurements and areas shown are based on pre-construction estimates and are approximate only. E.&O.E. Windows locations and sizes on these renderings are dependent on building location and elevation as approved by the City of Calgary, confirm with your sales representative exact locations. WEST83-29374 Phase 2 Blacklines (Sept 9, 2024)

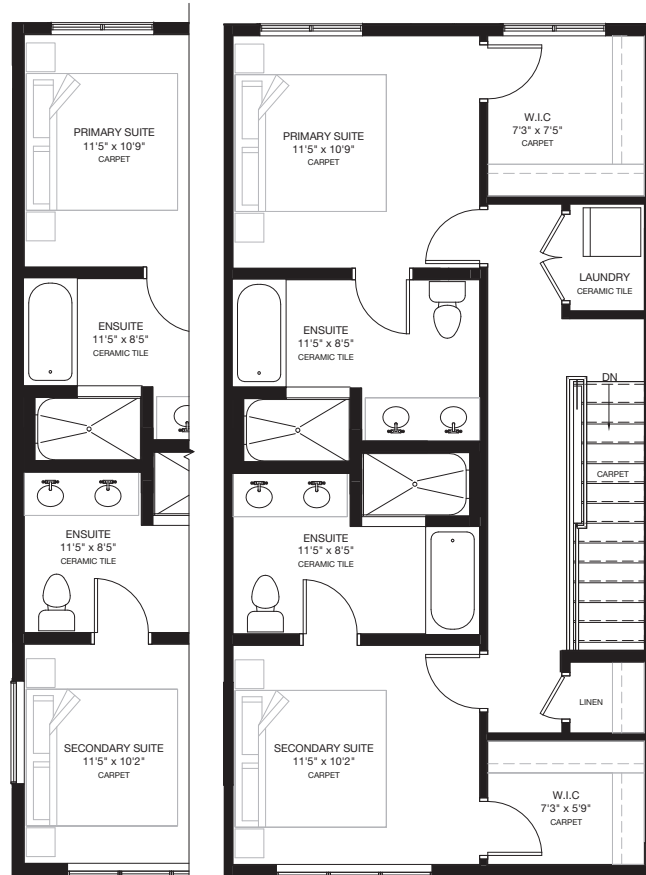


WEST/83
TOWNHOMES
WEST SPRINGS



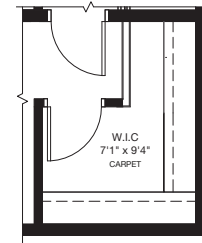
Available
**Oakwood
Options**

TYPE 3 • 20' UNIT



END UNIT

UPPER LEVEL • OPTION 1
Area: 750 Sq.Ft.
Total Area: 1834 Sq.Ft.



UPPER LEVEL • WALK-IN CLOSET OPTION

* Floorplan is an artist rendering only and may be subject to change without notice. Builder reserves the right to make modifications and changes to building design, specifications, features and floorplans without notice. Measurements and areas shown are based on pre-construction estimates and are approximate only. E.&O.E. Windows locations and sizes on these renderings are dependent on building location and elevation as approved by the City of Calgary, confirm with your sales representative exact locations. WEST83-29374 Phase 2 Blacklines (Sept 9, 2024)