



IMMEDIATE POSSESSION



THE REGENT 1344 SQ.FT.

105 - 285 Chelsea Court



2 Bedrooms



3½ Bathrooms



Single Garage

OPTIONS INCLUDED IN THIS HOME ARE:

- Homesite facing green space
- Hardie Board siding exterior
- Driftwood colour palette
- Entry level flex room with full bathroom
- Open concept main floor
- 9' Knock-down ceilings on main floor
- Upgraded semi-built-in kitchen with appliances
- Upgraded flush mounted LED lights in great room
- Zebra blinds
- Dual bedrooms with separate ensuites & walk-in closets
- LVP flooring on upper floor
- A/C rough-ins & gas line to deck
- Minutes away from eco-park, green space, schools, neighbourhood plaza & East Hills Shopping Centre

COME VISIT OUR SHOWHOME

115 & 116 - 285 Chelsea Court, Chestermere, AB

Call Sam Bibanco today at 825.540.0437 or email at chelseacourt@tricohomes.com



THE MONARCH



THE REGENT

SHOWHOME HOURS:

Mon - Thurs: 2pm - 8pm

Fri: Closed

Sat - Sun: 12pm - 5pm

**PLUS RECEIVE YOUR OWN
TRICO RED CARD**



**& ENJOY INCREDIBLE
ONGOING SAVINGS &
REWARDS FROM OUR
PARTNERS & RETAILERS**



**Chelsea
Court**
TOWNHOMES

**Trico
Homes™**
The Heart of Homebuilding®



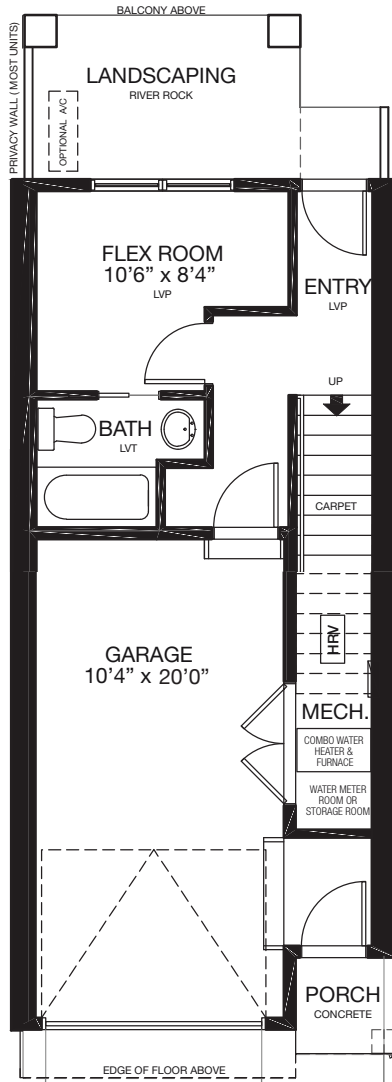
tricohomes.com



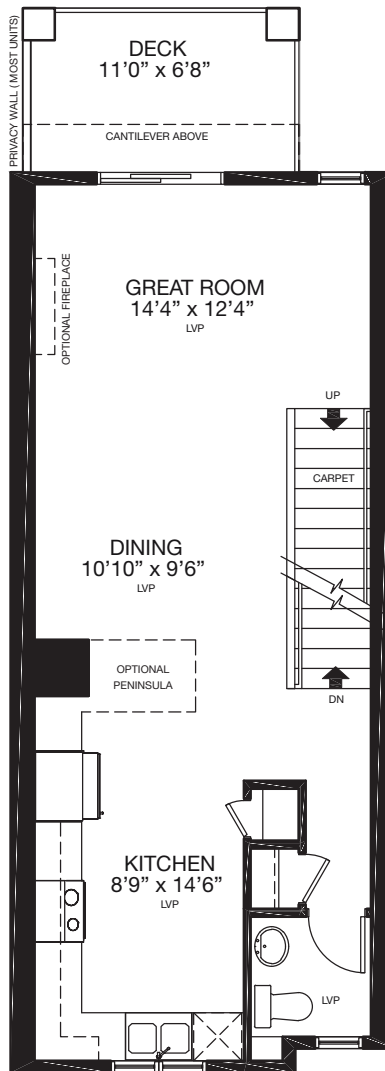
THE REGENT

1344 SQ.FT.

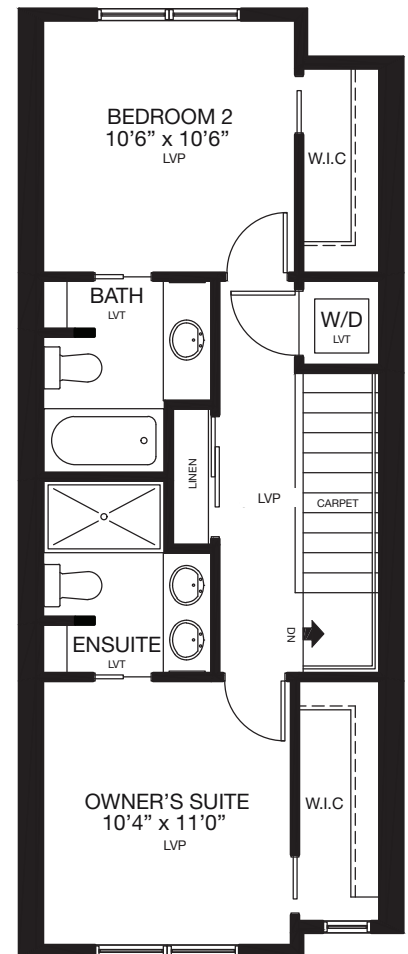
105 - 285 Chelsea Court



ENTRY
203 SQ.FT.



MAIN
559 SQ.FT.



UPPER
582 SQ.FT.



Renderings are artist's conceptions only and may vary by community and lot selection. Prices, floorplans, specifications and dimensions are approximate and are subject to change without notice. E.&O.E. © All rights reserved, including the right if reproduction in the whole or in part without the permission of Trico Homes.

Plan updated September 22, 2025



tricohomes.com