



**APRIL POSSESSION**



# THE CONCORD ZLL 2310 SQ.FT.

**88 Creekview Manor SW**



5 Bedrooms



3 Bathrooms



Double Garage

### OPTIONS INCLUDED IN THIS HOME ARE:

- Walk-out homesite near parks & pathways
- Main floor bedroom & full bathroom
- Quartz kitchen countertops
- Gas range, chimney hood fan & built-in microwave
- Full-height cabinets to ceiling
- Walk-in pantry
- Electric fireplace in great room
- Hardwood throughout main floor
- Upper floor central bonus room & 4 bedrooms
- 5-Piece owner's ensuite with walk-in closet
- Full laundry room on upper floor
- 16'x9' Rear deck with aluminum railings
- Gas line to deck

### COME VISIT OUR SHOWHOMES

**8 Creekview Manor SW, Calgary, AB**

Call Isabel Rodriguez today at 403.454.3023 or email at creekview@tricohomes.com



#### SHOWHOME HOURS:

**Mon - Thurs:** 2pm - 8pm

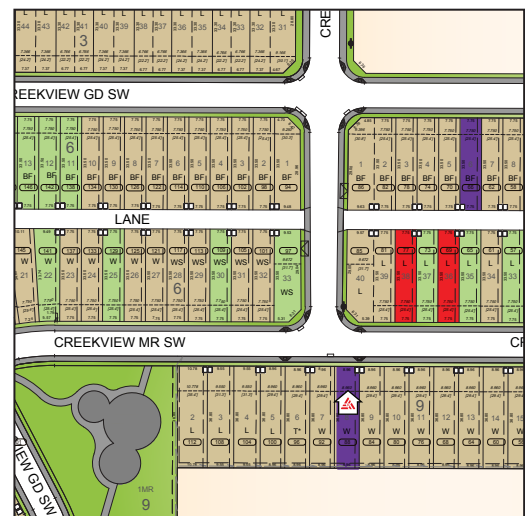
**Fri:** Closed

**Sat - Sun:** 12pm - 5pm

**PLUS RECEIVE YOUR OWN  
TRICO RED CARD**



**& ENJOY INCREDIBLE  
ONGOING SAVINGS &  
REWARDS FROM OUR  
PARTNERS & RETAILERS**



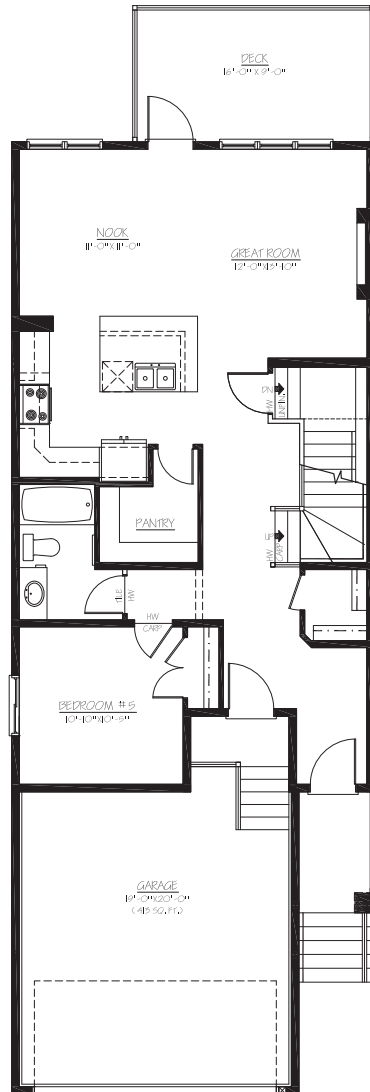
[tricohomes.com](http://tricohomes.com)



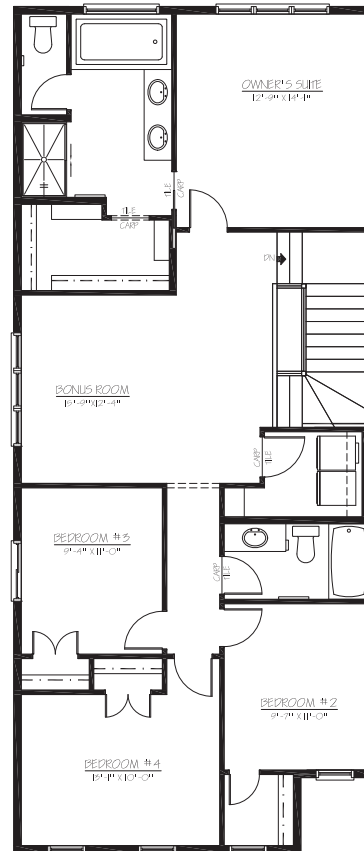
# THE CONCORD ZLL

2310 SQ.FT.

88 Creekview Manor SW



**MAIN**  
1000 SQ.FT.



**UPPER**  
1310 SQ.FT.



Platinum member  
2004 - 2024



Renderings are artist's conceptions only and may vary by community and lot selection. Prices, floorplans, specifications and dimensions are approximate and are subject to change without notice. E.&O.E. © All rights reserved, including the right if reproduction in the whole or in part without the permission of Trico Homes.

Plan updated February 20, 2025



The Heart of Homebuilding®



tricohomes.com