



NOVEMBER POSSESSION



THE RAEYA 1802 SQ.FT.

16 Legacy Reach Court SE



4 Bedrooms



3 Bathrooms

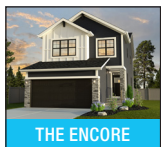
OPTIONS INCLUDED IN THIS HOME ARE:

- Steps away from environmental reserve, schools, & community pathways
- Legal basement suite with 2 bedrooms, full bathroom & separate entrance
- Main floor bedroom & full bathroom
- Quartz kitchen countertops
- Knock-down ceiling texture
- Hardwood, tile & carpet throughout
- Central bonus room & 3 bedrooms on upper floor
- 3-Piece owner's ensuite with soaker tub
- Spacious walk-in closet
- Full laundry room with shelving
- 9' Foundation
- Front veranda & rear deck with aluminum railings

COME VISIT OUR SHOWHOMES

416 & 418 Legacy Circle SE, Calgary, AB

Call Ryan Tetrault today at 403.474.1545 or email at legacy@tricohomes.com



THE ENCORE



THE OXFORD II

SHOWHOME HOURS:

Mon - Thurs: 2pm - 8pm

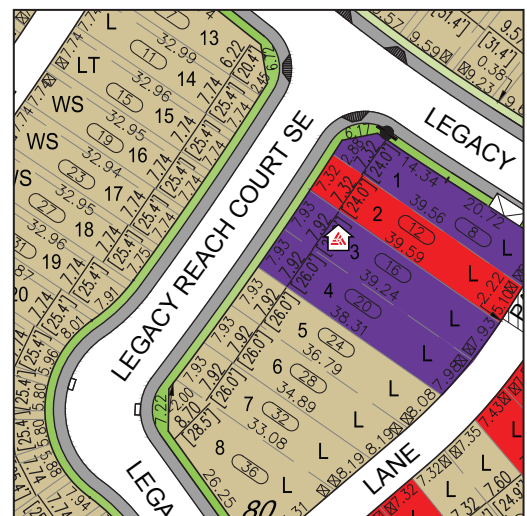
Fri: Closed

Sat - Sun: 12pm - 5pm

PLUS RECEIVE YOUR OWN
TRICO RED CARD



**& ENJOY INCREDIBLE
ONGOING SAVINGS &
REWARDS FROM OUR
PARTNERS & RETAILERS**



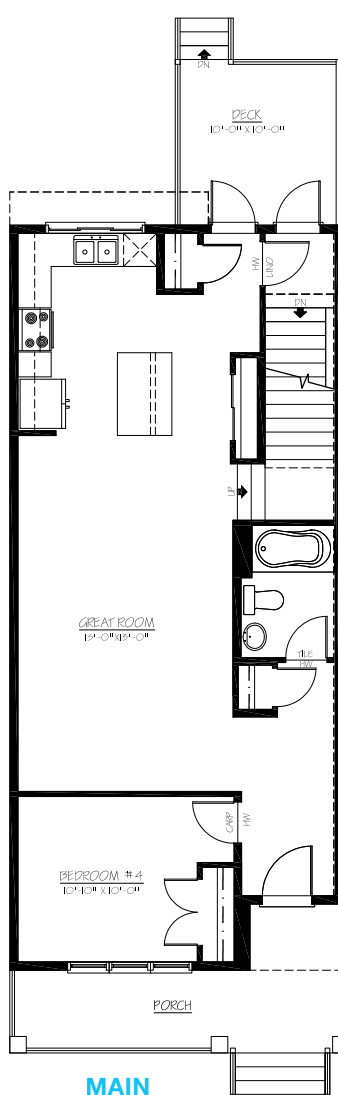
tricohomes.com



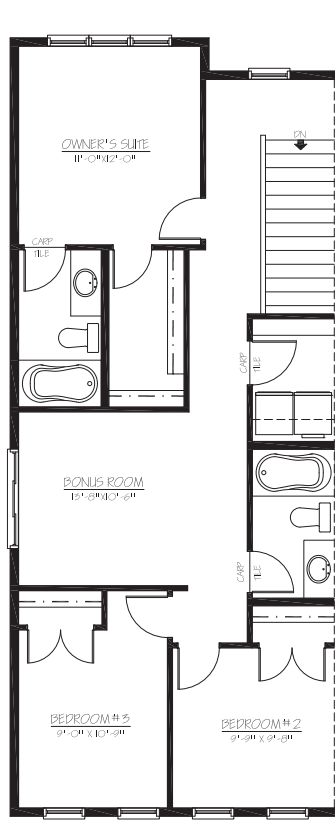
THE RAEYA

1802 SQ.FT.

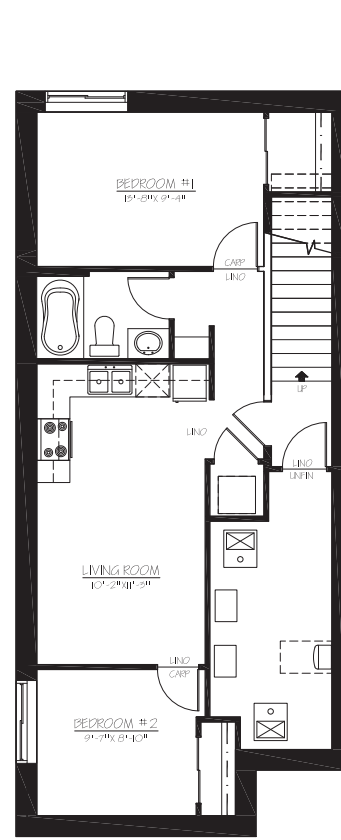
16 Legacy Reach Court SE



MAIN
878 SQ.FT.



UPPER
924 SQ.FT.



BASEMENT
636 SQ.FT.



Platinum member
2004 - 2024



Renderings are artist's conceptions only and may vary by community and lot selection. Prices, floorplans, specifications and dimensions are approximate and are subject to change without notice. E.&O.E. © All rights reserved, including the right if reproduction in the whole or in part without the permission of Trico Homes.

Plan updated October 18, 2024



tricohomes.com