



**SPRING 2025 POSSESSION**



# THE REGENT 1301 SQ.FT.

**103 - 285 Chelsea Court**



2 Bedrooms



2½ Bathrooms



Single Garage

### OPTIONS INCLUDED IN THIS HOME ARE:

- Homesite facing green space
- Moonlight colour palette
- Flex room on entry level
- Open concept main floor
- Upgraded semi-built-in kitchen with appliances
- Upgraded flush mounted LED lights in great room
- 9' Knock-down ceilings on main floor
- Zebra blinds
- Dual bedrooms with separate ensuites & walk-in closets
- LVP flooring on upper floor
- A/C rough-ins
- Gas line to deck
- Minutes away from eco-park, green space, schools, neighbourhood plaza & East Hills Shopping Centre

### COME VISIT OUR SHOWHOME

**259 Chelsea Road, Chestermere, AB**  
Call Sam Bibanco today at 587.496.8192 or  
email at [chelseacourt@tricohomes.com](mailto:chelseacourt@tricohomes.com)



### SHOWHOME HOURS:

**Mon - Thurs:** 2pm - 8pm

**Fri:** Closed

**Sat - Sun:** 12pm - 5pm

### PLUS RECEIVE YOUR OWN TRICO RED CARD



**& ENJOY INCREDIBLE  
ONGOING SAVINGS &  
REWARDS FROM OUR  
PARTNERS & RETAILERS**



# Chelsea Court

TOWNHOMES

# Trico Homes™

The Heart of Homebuilding®



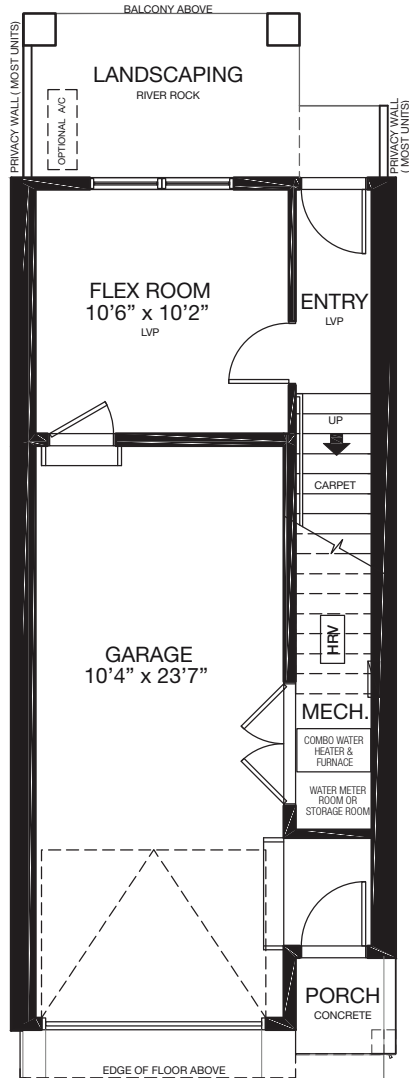
[tricohomes.com](http://tricohomes.com)



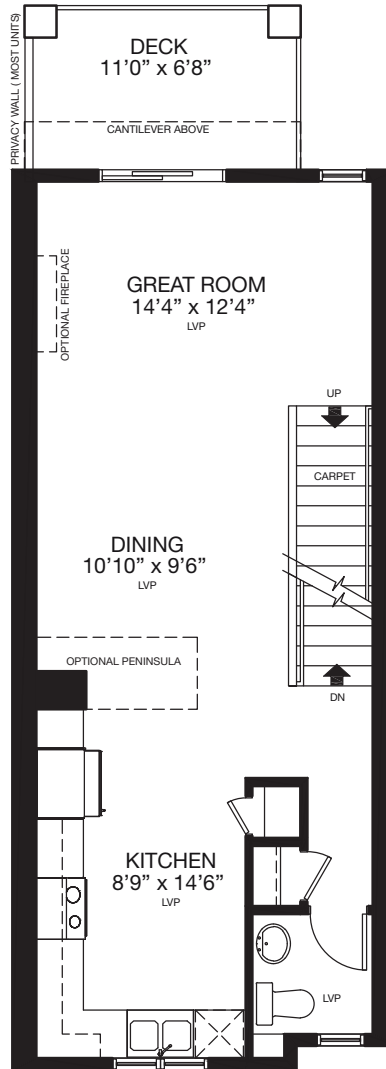
# THE REGENT

## 1301 SQ.FT.

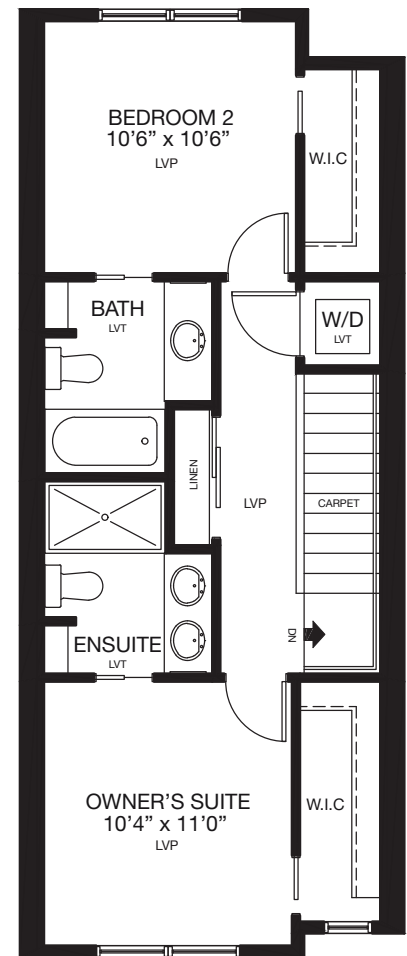
103 - 285 Chelsea Court



**ENTRY**  
160 SQ.FT.



**MAIN**  
559 SQ.FT.



**UPPER**  
582 SQ.FT.



Renderings are artist's conceptions only and may vary by community and lot selection. Prices, floorplans, specifications and dimensions are approximate and are subject to change without notice. E.&O.E. © All rights reserved, including the right if reproduction in the whole or in part without the permission of Trico Homes.

Plan updated November 21, 2024



trichomes.com