



 3 Bedrooms  2½ Bathrooms  Double Garage

[illegible]

**Trico  
Homes™**  
The Heart of Homebuilding®

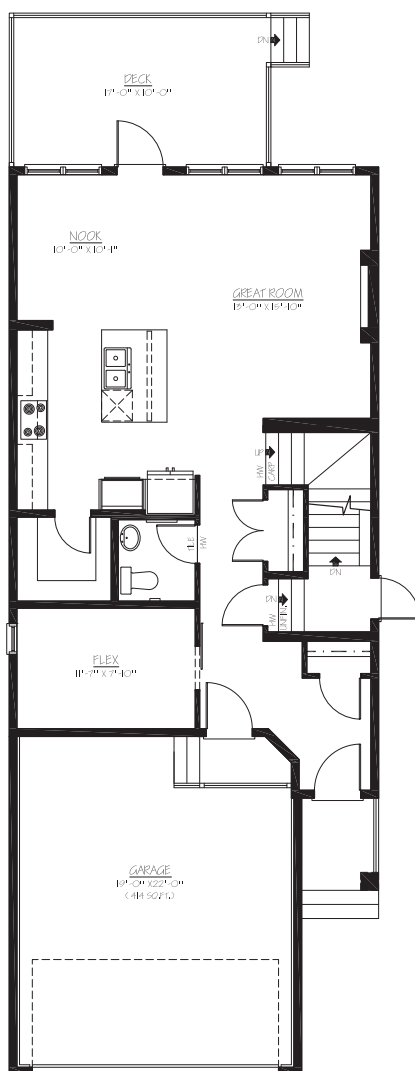




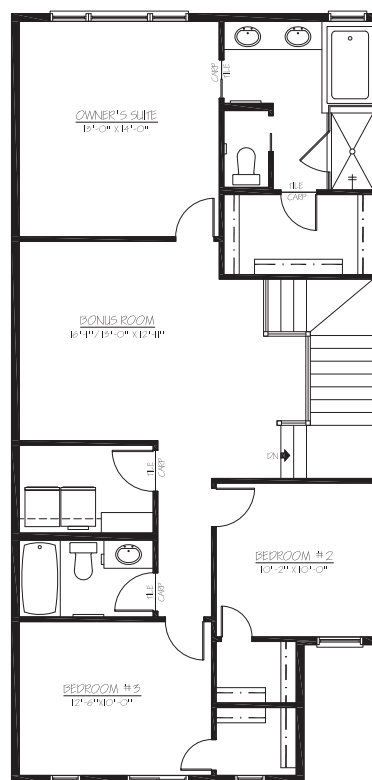
# THE OXFORD II

2067 SQ.FT.

18 Southborough Crescent



**MAIN**  
912 SQ.FT.



**UPPER**  
1155 SQ.FT.



Platinum member  
2004 - 2025



Renderings are artist's conceptions only and may vary by community and lot selection. Prices, floorplans, specifications and dimensions are approximate and are subject to change without notice. E.&O.E. © All rights reserved, including the right if reproduction in the whole or in part without the permission of Trico Homes.

Plan updated July 2, 2025



The Heart of Homebuilding®



tricohomes.com