


← 34' →
Min. Lot Width

 1 Bedroom

 1½ Bathrooms

 Double Garage

THE WYNWOOD 26'

1227 SQ.FT.

Elements Specification

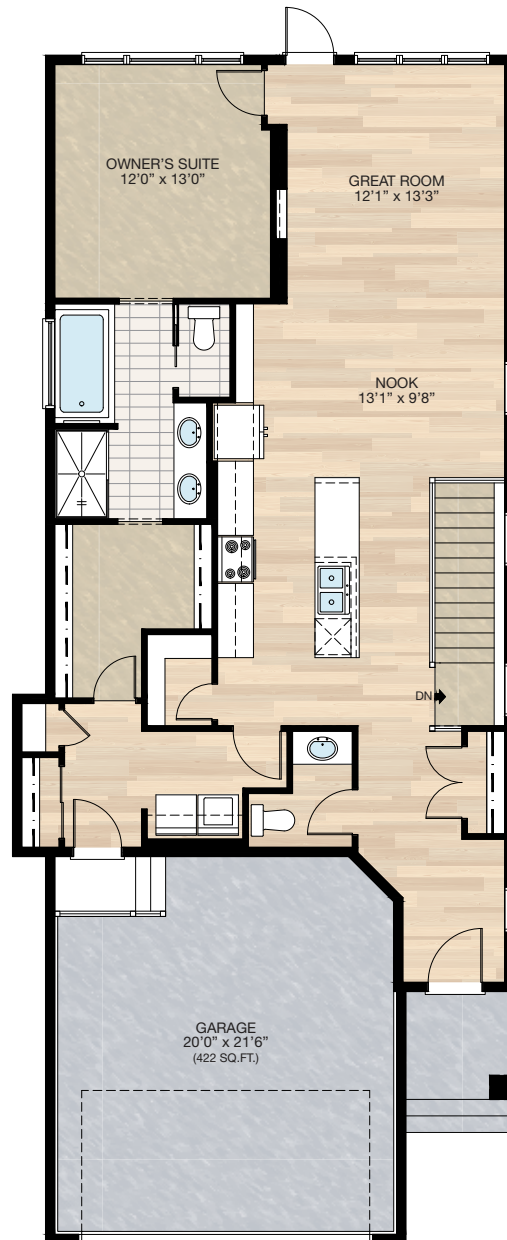
Elite Specification



Trico Homes™
The Heart of Homebuilding®

STANDARD PLAN

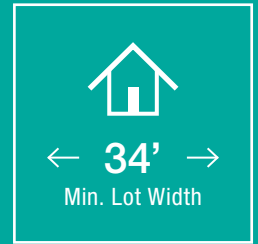
THE
WYNWOOD
1227 SQ.FT.



MAIN
1227 SQ.FT.

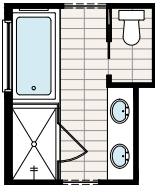


FEATURED OPTIONS



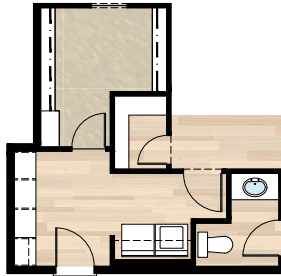
SELECT-1 ENSUITE OPTION

- *CANNOT be combined with **SELECT-3** or **4** option
- Delete standard 36" x 60" fiberglass shower
- Add 40" x 60" tiled shower with 10mm glass
- Extend tub tiled ledge by 3.5" next to shower
- Relocate towel bar to opposite side of tub



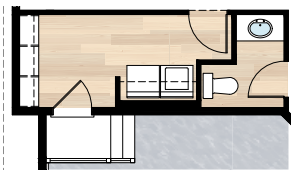
SELECT-2 MUDROOM MDF LOCKER OPTION

- *CANNOT be combined with **SELECT-3** or **4** option
- Delete coat closet & linen closet at mudroom
- Add 8'0" locker & coat hooks with MDF backing
- Replace 30" of closet shelving in master walk-in closet with four 30" wide & 16" deep wire shelving for linen



SELECT-4A MUDROOM LOCKER OPTION

- *MUST be combined with **SELECT-4** Flex Room option
- Delete coat & linen closet in mudroom
- Add 6'5½" MDF locker & coat hooks with MDF backing behind shelving

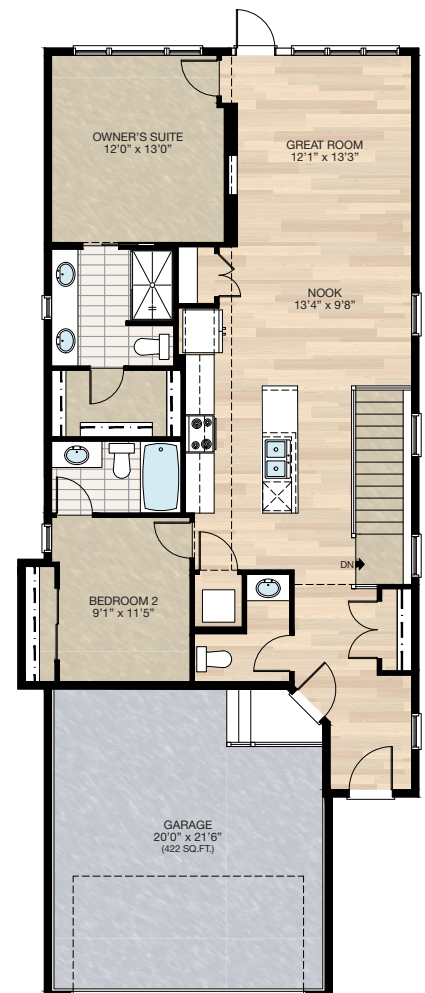
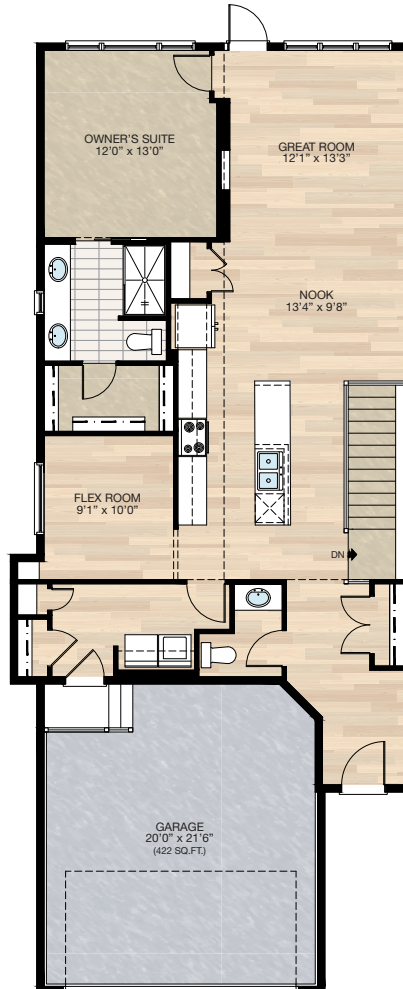


SELECT-4 FLEX ROOM OPTION

- Delete 72" x 36" soaker tub at ensuite
- Delete 60" x 48" P frosted window at ensuite
- Add 20" x 48" P frosted window at ensuite between two sinks
- Vanity mirror to be two 24" x 42" centered over each sink
- Additional 22" of vanity at ensuite
- Reduced master walk-in closet & add 2'4" door
- Add 60" x 18" P window to flex room
- Delete 66" of the 12" deep cabinetry
- Add 15" cabinetry to main kitchen
- Delete walk-in pantry
- Add pantry closet with light outlet & switch - reduce mudroom closet & change door from 4'0" bi-pass doors to single 2'6" door
- Add four 18" deep MDF shelves to flex room

SELECT-3 2 BEDROOMS WITH DUAL ENSUITES OPTION

- Delete 72" x 36" soaker tub at ensuite
- Delete 60" x 48" P frosted window at ensuite
- Add 20" x 48" P frosted window at ensuite between two sinks
- Vanity mirror to be two 24" x 42" centered over each sink
- Additional 20" of vanity at ensuite
- Reduced master walk-in closet & add 2'4" door
- Add 2nd bedroom with closet & 3-piece ensuite
- Add 24" x 72" VSL to Bedroom 2
- Delete 66" of 12" deep cabinetry at kitchen
- Delete walk-in pantry
- Add pantry closet
- Reduced kitchen island length by 14"
- Delete mudroom & relocate garage entrance
- Add stackable W/D laundry closet

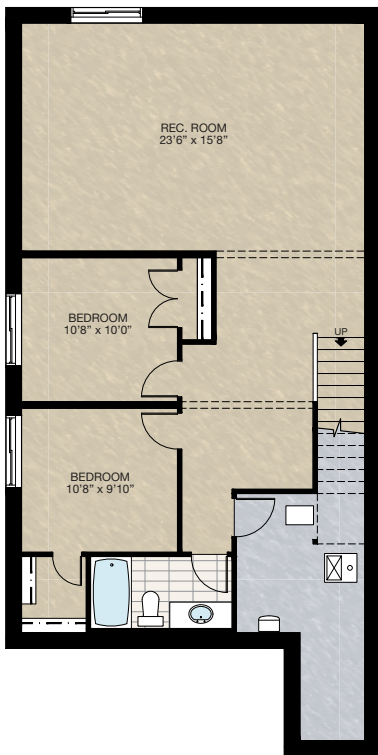


FEATURED OPTIONS

THE
WYNWOOD
1227 SQ.FT.

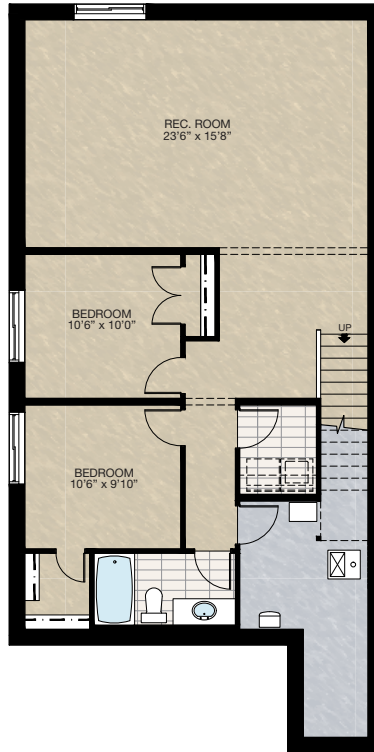
SELECT-5 BASEMENT DEVELOPMENT OPTION 1

- 929 Sq.Ft. developed area
- Add 1 riser to finished stairwell for 9'0" basement ceiling (8'9" headroom clearance)
- All three basement windows upgraded from 24" High to 36" high
- 42" High stub wall added to stair



SELECT-6 BASEMENT DEVELOPMENT OPTION 2

- 930 Sq.Ft. developed area
- Add laundry room with washer & dryer rough-in
- Add 1 riser to finished stairwell for 9'0" basement ceiling (8'9" headroom clearance)
- All three basement windows upgraded from 24" High to 36" high
- 42" High stub wall added to stair



Trico Homes is a local home builder, with new single and multi-family homes for sale in Calgary, Okotoks, Chestermere, Cochrane, Airdrie and DeWinton. Offering a great selection of starter, move-up, semi-estate and ultra-estate models in numerous communities, you'll find the house that's just right for you! Look for this model and many others in Ambleton, Arbour Lake, Belmont, Carrington, Chelsea, Cornerbrook, D'Arcy, Dawson's Landing, Glacier Ridge, Hamilton Heights, Homestead, Legacy, Midtown, Pine Creek, Precedence, Rivercrest, Seton, Sirocco, Verona West Townhomes, West83 Townhomes and Wolf Willow.



Renderings are artist's conceptions only and may vary by community and lot selection. Prices, floorplans, specifications and dimensions are approximate and are subject to change without notice. E.&O.E. © All rights reserved, including the right if reproduction in the whole or in part without the permission of Trico Homes.

Plan updated as of October 04, 2024.



tricohomes.com