



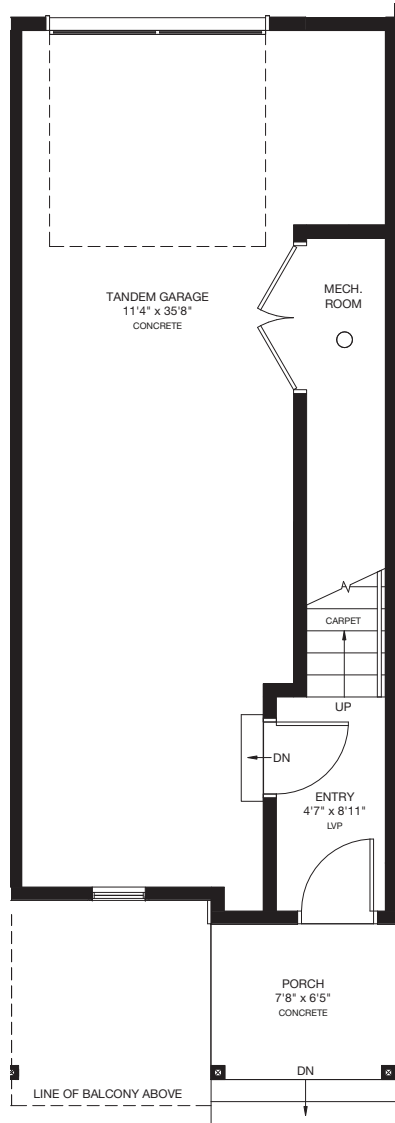
WEST/83
TOWNHOMES
WEST SPRINGS

Emerson

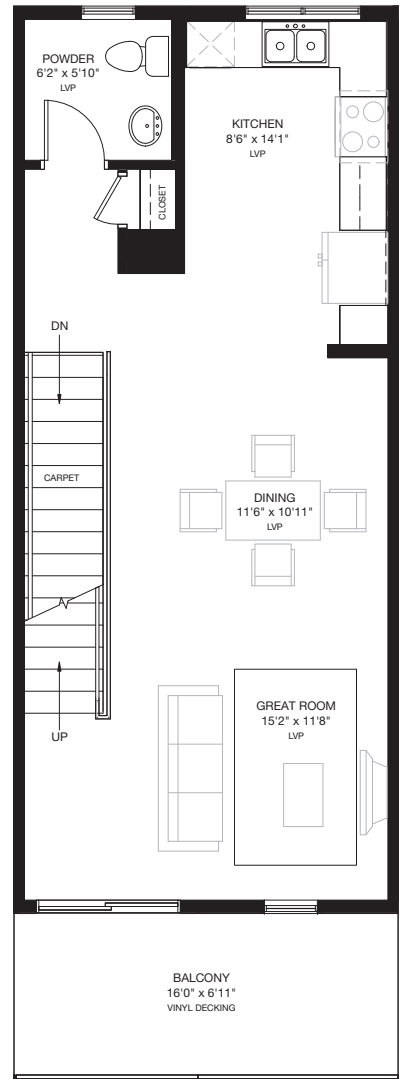
1290 SQ.FT.

- 2 Bedrooms
- 2½ Bathrooms
- Tandem Garage

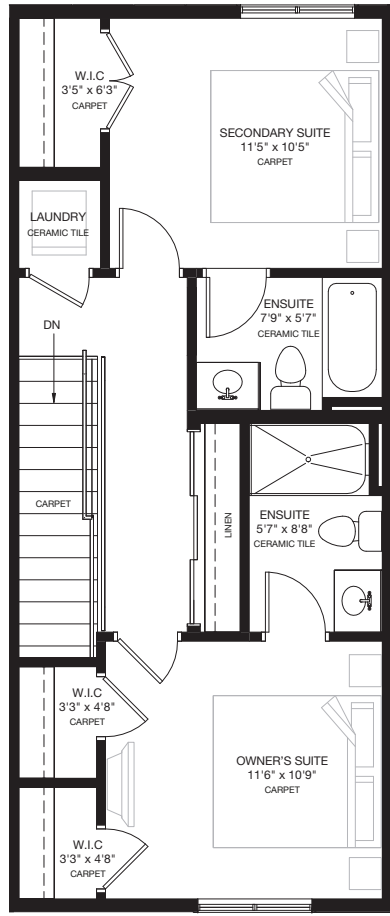
TYPE 1 • 16' UNIT



ENTRY LEVEL
Area: 124 Sq.Ft.



MAIN LEVEL
Area: 604 Sq.Ft.



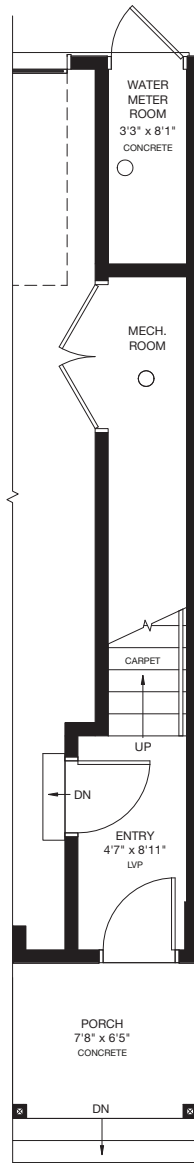
UPPER LEVEL
Area: 562 Sq.Ft.

* Floorplan is an artist rendering only and may be subject to change without notice. Builder reserves the right to make modifications and changes to building design, specifications, features and floorplans without notice. Measurements and areas shown are based on pre-construction estimates and are approximate only. E.&O.E. Windows locations and sizes on these renderings are dependent on building location and elevation as approved by the City of Calgary, confirm with your sales representative exact locations. WEST83-29374 Phase 2 Blacklines (Sept 9, 2024)

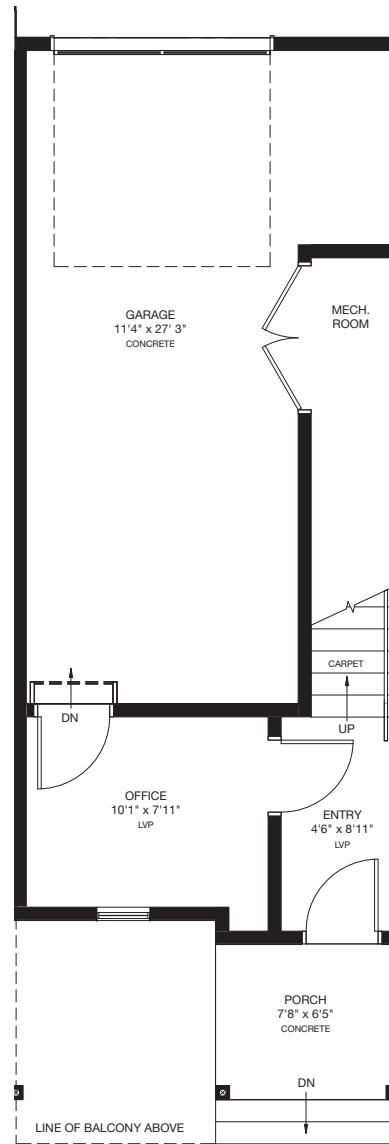



WEST/83
 TOWNHOMES
 WEST SPRINGS

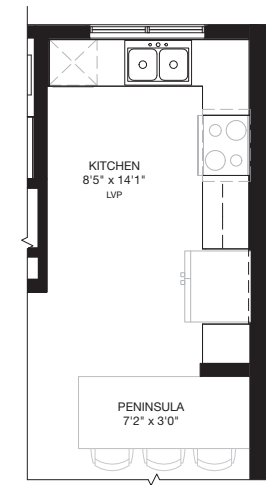
Available
Emerson
Options
 TYPE 1 • 16' UNIT



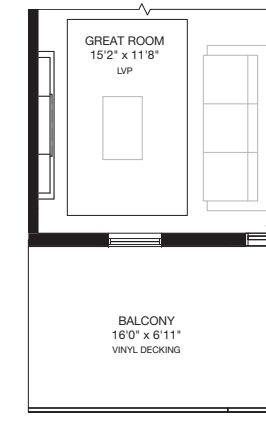
ENTRY LEVEL • WITH WATER METER ROOM



ENTRY LEVEL • OPTION 1
 Area: 252 Sq.Ft.
 Total Area: 1418 Sq.Ft.



MAIN LEVEL • KITCHEN PENINSULA OPTION



MAIN LEVEL • FIREPLACE OPTION

* Floorplan is an artist rendering only and may be subject to change without notice. Builder reserves the right to make modifications and changes to building design, specifications, features and floorplans without notice. Measurements and areas shown are based on pre-construction estimates and are approximate only. E.&O.E. Windows locations and sizes on these renderings are dependent on building location and elevation as approved by the City of Calgary, confirm with your sales representative exact locations. WEST83-29374 Phase 2 Blacklines (Sept 9, 2024)